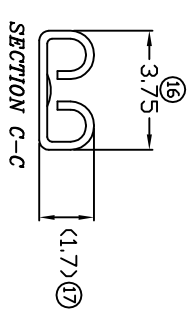
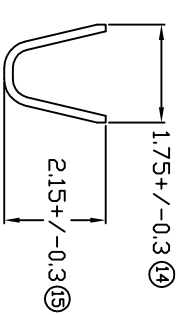
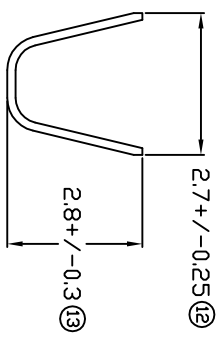
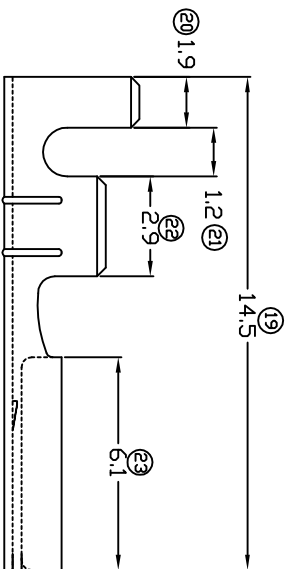
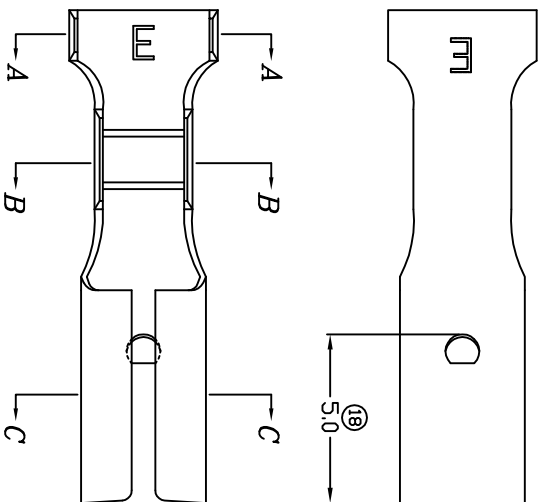


TERMINALS SPECIFICATION DRAWING



FOR REFERENCE ONLY

- 11) CRIMPING WIRE TENSILE FORCE IS BASE ON COPPER BREAK OFF INTENSITY.
- 10) TEMPERATURE RANGE -40°C TO +120°C.
- 9) VOLTAGE-MAX [VOLTS] PER WIRE SPECIFICATION.
- 8) MATCHING WITH TAB t0.5 X W2.8.
- 7) FOR REFERENCE ONLY.
- 6) TENSILE FORCE : MIN 4.5KG.
- 5) INSERT FORCE : MAX 3.5KG.
- 4) THICKNESS PLATING MORE THAN 40µ INCH.
- 3) PACKING QTY : 15000 PCS/REEL.
- 2) WIRE INSULATION (O.D) : 1.6MM.
- 1) APPLICABLE WIRE RANGE : 0.37-0.16MM².

SPECIFICATION :

	MATERIAL: t0.25 BRASS C2680	TIN PLATING	17110S-2
	DIMENSIONS : MM	TREATMENT SELECTIVE	PART NUMBER
	TOLERANCE UNLESS OTHERWISE SPECIFIED:	DWN: KS YEWE	
REVISION: 03	X.XXX +/-0.05 X.XX +/-0.10 X.X +/-0.20 X +/-0.50	CHK: HY LIM	
		APVD: CHUANG	PART NAME: 110 SERIES FEMALE TERMINALS
SHEET OF : 1 / 1	EFFECTIVE DATE : 24/9/07	SCALE : FREE DRAWING NO: A1251-(2)	APPLICABLE (1) TERMINALS (2) HOUSING (1) TAB t0.5 X W2.8 (2) -
EPI Terminals & Connectors Elamp Precision Industry(M) Sdn.Bhd.			