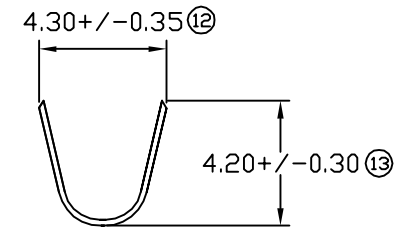
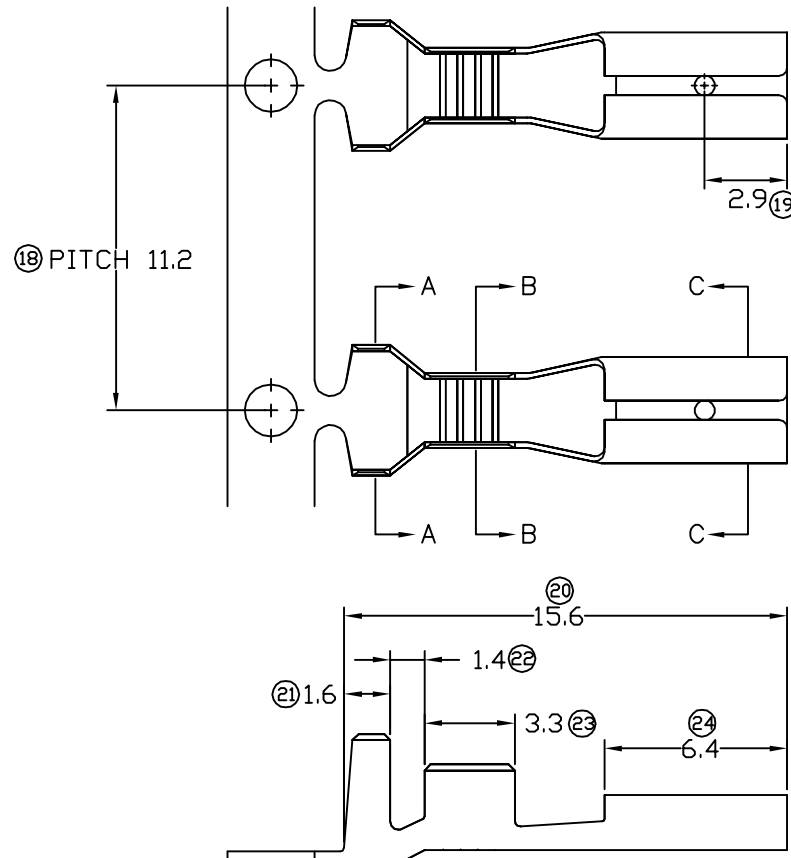
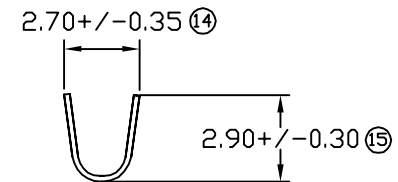


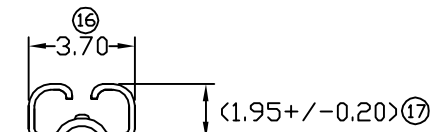
# TERMINALS SPECIFICATION DRAWING



SECTION A-A



SECTION B-B



SECTION C-C

- 11) CRIMPING WIRE TENSILE FORCE IS BASE ON COPPER BREAK OFF INTENSITY.
- 10) TEMPERATURE RANGE  $-40^{\circ}\text{C}$  TO  $+120^{\circ}\text{C}$ .
- 9) VOLTAGE-MAX [VOLTS] PER WIRE SPECIFICATION.
- 8) (17) FOR REFERENCE ONLY.
- 7) MATCHING WITH TAB  $t0.8 \times W3.0$ .
- 6) TENSILE FORCE : MIN 0.75KG.
- 5) INSERT FORCE : MAX 2.50KG.
- 4) THICKNESS PLATING MORE THAN  $40\mu$  INCH.
- 3) PACKING QTY : 6000 PCS/REEL.
- 2) WIRE INSULATION (O.D) : 2.5MM.
- 1) APPLICABLE WIRE RANGE :  $0.77-0.34\text{MM}^2$ .

SPECIFICATION :

| REV. | DATE   | AMENDMENT  |
|------|--------|--|
| 07   | 5/3/09 | 5)INSERT FORCE: MAX 2.8KG CHANGE TO MAX 2.50KG,<br>6)TENSILE FORCE: MIN 1.45KG CHANGE TO MIN 0.75KG. |

**FOR REFERENCE ONLY**

|                     |  |
|---------------------|--|
| REVISION:<br>07     |  |
| SHEET OF :<br>1 / 1 |  |

|  |                      |   |
|--|----------------------|---|
| MATERIAL:<br>t0.25 BRASS<br>C2680  | PRE-TIN PLATED       | 17113M(0.8)-2T  |
|  | NONE                 | 17113M(0.8)-1   |
|  | TREATMENT SELECTIVE  | PART NUMBER   |
| DIMENSIONS : MM  | DWN: KS YEW          | <b>EPI</b> Terminals & Connectors<br>Elamp Precision Industry(M) Sdn.Bhd. |
| TOLERANCE UNLESS OTHERWISE SPECIFIED:<br>X.XXX +/-0.05<br>X.XX +/-0.10<br>X.X +/-0.20<br>X +/-0.50 | CHK: C.Y CHUANG      |   |
|  |                      | APVD: Y.L CHUANG  |
|  | SCALE : FREE         | (1) TAB $t0.8 \times W3.0$  |
|  | DRAWING NO:<br>A1362 | (2) 113F1   |
| EFFECTIVE DATE :<br>5/3/09   |                      |   |