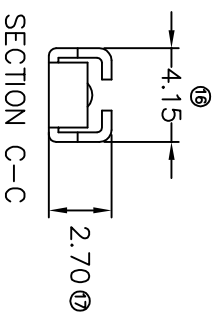
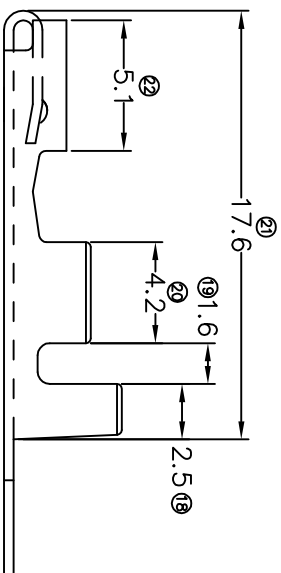
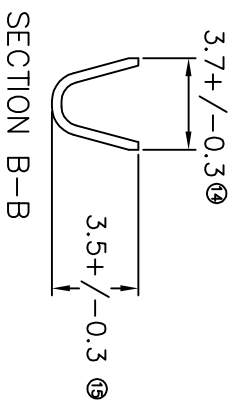
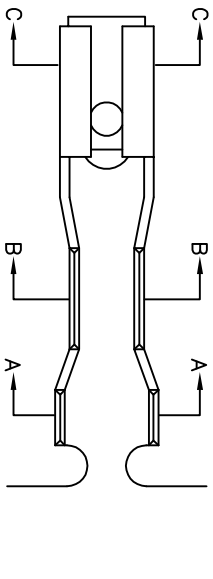
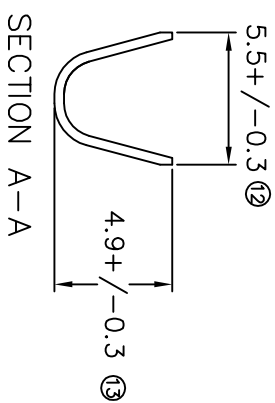
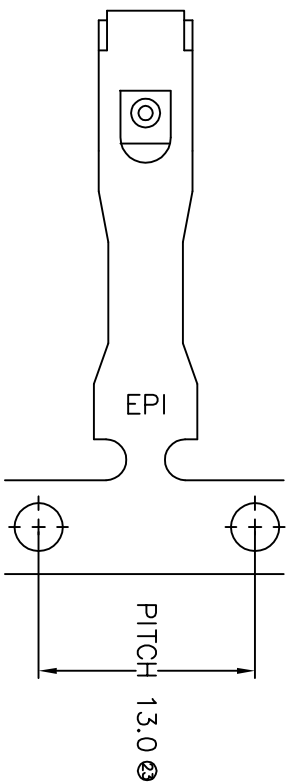


# TERMINALS SPECIFICATION DRAWING



FOR REFERENCE ONLY

- 10) CRIMPING WIRE TENSILE FORCE IS BASE ON COPPER BREAK OFF INTENSITY.
- 9) TEMPERATURE RANGE -40°C TD +120°C.
- 8) VOLTAGE-MAX [VDLTS] PER WIRE SPECIFICATION.
- 7) MATCHING WITH TAB t0.6 X W3.0.
- 6) TENSILE FORCE : MIN 0.50KG.
- 5) INSERT FORCE : MAX 0.80KG.
- 4) THICKNESS PLATING MORE THAN 40μ INCH.
- 3) PACKING QTY : 4000 PCS/REEL.
- 2) WIRE INSULATION (O.D) : 2.9MM.
- 1) APPLICABLE WIRE RANGE : 1.48-0.75MM<sup>2</sup>.

SPECIFICATION :

REVISION:		SHEET OF :	
04	1	1	1
MATERIAL: <b>t0.40 BRASS</b> C2680		PRE-TIN PLATED TREATMENT SELECTIVE	
DIMENSIONS : MM TOLERANCE UNLESS OTHERWISE SPECIFIED:		DWN: KS YEW CHK: SC CHOO APVD: CHUANG SCALE : FREE DRAWING NO:	
X.XXX +/-0.05 X.XX +/-0.10 X.X +/-0.20 X +/-0.50		EFFECTIVE DATE : 12/7/07	
EPI Terminals & Connectors Elamp Precision Industry(M) Sdn.Bhd.		PART NAME: 118 TAB-IN TAB & REC. TYPE APPLICABLE (1) TERMINALS (2) HOUSING (1) 271181H (2) MIC-5F	
171181H-2T PART NUMBER			