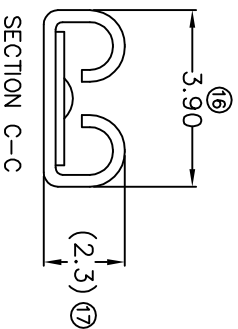
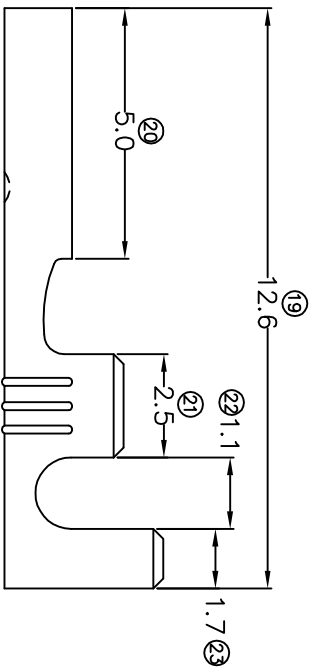
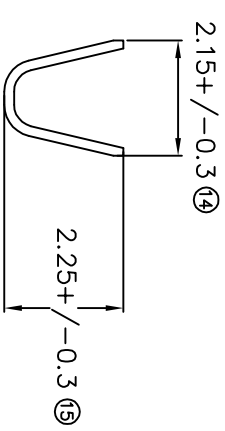
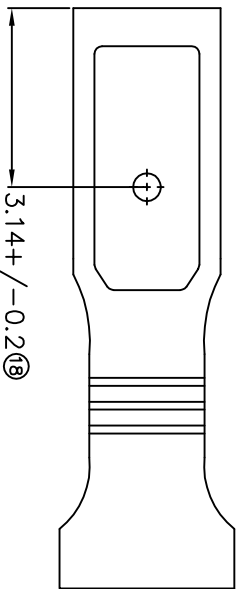
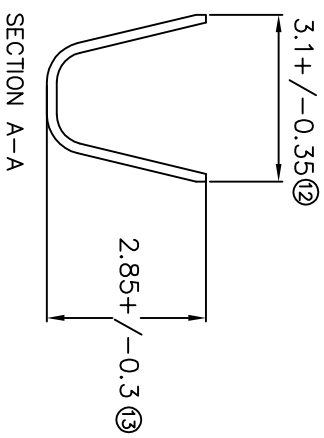
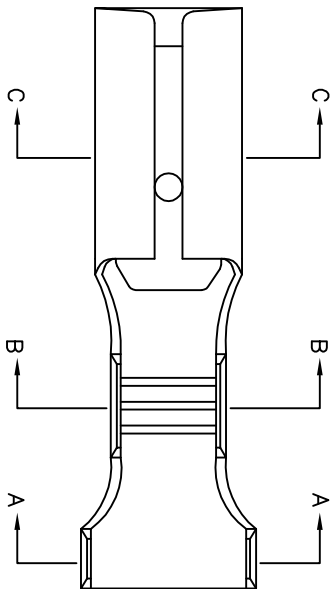


TERMINALS SPECIFICATION DRAWING



FOR REFERENCE ONLY

- 11) CRIMPING WIRE TENSILE FORCE IS BASE ON COPPER BREAK OFF INTENSITY.
- 10) TEMPERATURE RANGE -40°C TD +120°C.
- 9) VOLTAGE-MAX [VOLTS] PER WIRE SPECIFICATION.
- 8) \varnothing FOR REFERENCE ONLY.
- 7) MATCHING WITH TAB t0.8 X W3.0.
- 6) TENSILE FORCE : MIN 2.20KG.
- 5) INSERT FORCE : MAX 2.50KG.
- 4) THICKNESS PLATING MORE THAN 40 μ INCH.
- 3) PACKING QTY : 20000 PCS/REEL.
- 2) WIRE INSULATION (O.D) : 1.6MM.
- 1) APPLICABLE WIRE RANGE : 0.40-0.18MM².

SPECIFICATION :

MATERIAL: t0.30 BRASS C2680		TIN PLATING NONE	
DIMENSIONS : MM		TREATMENT SELECTIVE	
TOLERANCE UNLESS OTHERWISE SPECIFIED: X.XXX +/-0.05 X.XX +/-0.10 X.X +/-0.20 X +/-0.50		DWN: KS YEW CHK: SC CHOO APVD: CHUANG	
EFFECTIVE DATE : 12/7/07		DRAWING NO: A1358	
REVISION: 05		PART NAME: 150 SERIES FEMALE TERMINALS	
SHEET OF : 1 / 1		APPLICABLE (1) TERMINALS (2) HOUSING (1) TAB t0.8 X W3.0 (2) _____	

EPI Terminals & Connectors
 Elamp Precision Industry(M) Sdn.Bhd.

17150SS(0.8)-2

17150SS(0.8)-1

PART NUMBER