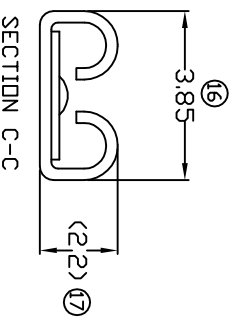
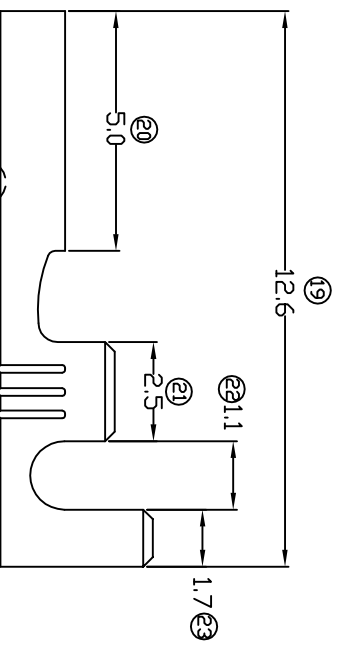
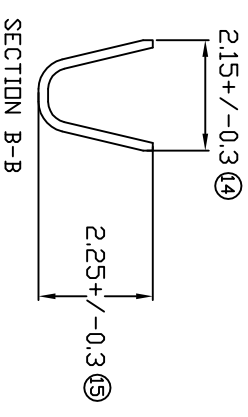
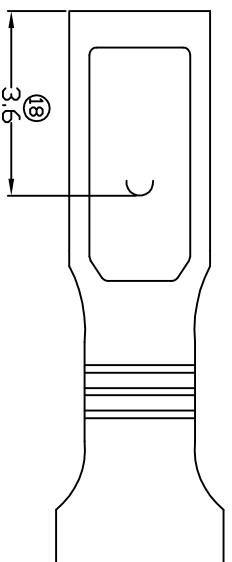
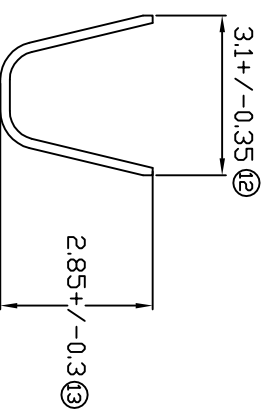
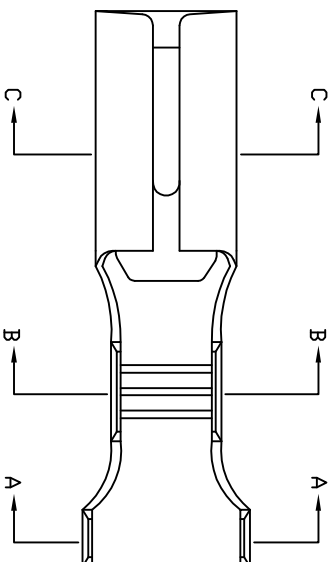


TERMINALS SPECIFICATION DRAWING



FOR REFERENCE ONLY

- 1) CRIMPING WIRE TENSILE FORCE IS BASE ON COPPER BREAK OFF INTENSITY.
- 10) TEMPERATURE RANGE : -40°C TO +120°C.
- 9) VOLTAGE-MAX [VOLTS] PER WIRE SPECIFICATION.
- 8) **(17)** FOR REFERENCE ONLY
- 7) MATCHING WITH TAB ±0.5 X W3.0
- 6) TENSILE FORCE : MIN 2,20KG.
- 5) INSERT FORCE : MAX 2,50KG.
- 4) THICKNESS PLATING MORE THAN 40µ INCH.
- 3) PACKING QTY : 20000 PCS/REEL.
- 2) WIRE INSULATION (O.D) : 1.6MM.
- 1) APPLICABLE WIRE RANGE : 0.41-0.18MM².

SPECIFICATION :

MATERIAL: 10.30 BRASS C2680		TIN PLATING NONE		17150SS-2 17150SS-1
DIMENSIONS : MM TOLERANCE UNLESS OTHERWISE SPECIFIED: X.XXX +/-0.05 X.XX +/-0.10 X.X +/-0.20 X +/-0.50		TREATMENT SELECTIVE		PART NUMBER 17150SS-2 17150SS-1
REVISION: 02		CHK: SC CHOO Y.L APVD: CHUANG		PART NAME: 150 SERIES FEMALE TERMINALS
SHEET OF : 1 / 1		DWN: KS YE W SCALE : FREE DRAWING NO:		EPI Terminals & Connectors Elamp Precision Industry(M) Sdn.Bhd. APPLICABLE (1) TERMINALS (2) HOUSING (1) TAB ±0.5 X W3.0 (2) -
EFFECTIVE DATE : 17/7/07		A1429		