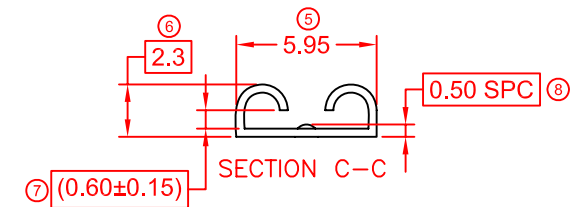
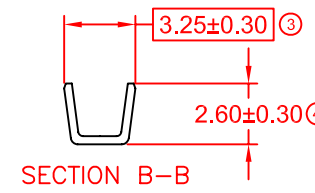
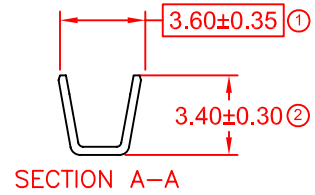
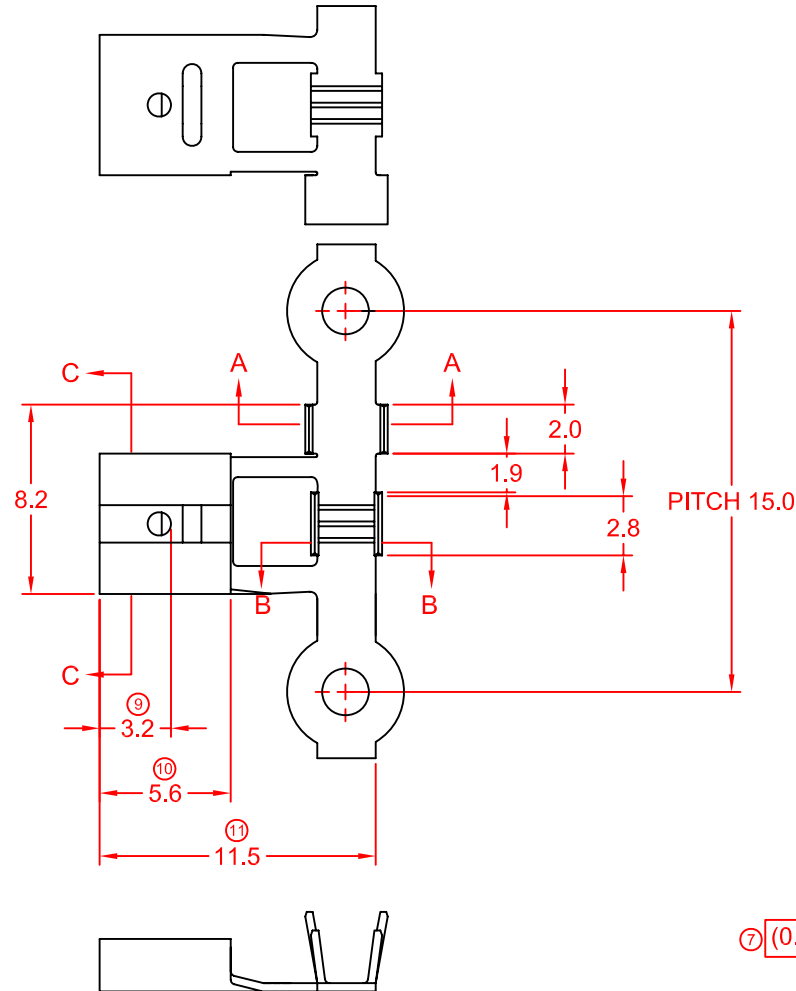
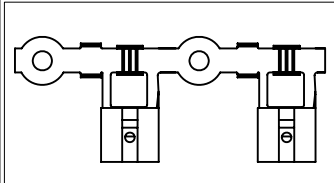


# SPECIFICATION DRAWING

MASTER COPY

ITEM NO	MATERIAL	TREATMENT	QTY/REEL	REEL/CARTON	MATCHING PART(S)
171871F(0.8)-2T	t0.35 BRASS (C2680)	PRE-TIN PLATED	4000 PCS	9	TERMINAL-TAB t0.8 X W4.75

SYMBOL	DESCRIPTION
○	DIMENSION INSPECTED DURING SETUP AND OUTGOING.
□	DIMENSION INSPECTED HOURLY.
SPC	STATISTICALLY CONTROLLED DIMENSION.
△	JIG USED DURING INSPECTION.



- REMARKS:
- a) PLATING THICKNESS MIN 40μ INCH
  - b) SUGGESTED WIRE INSULATION (O.D): 2.1MM
  - c) SUGGESTED WIRE RANGE: 0.74~0.33MM<sup>2</sup> (AWG16~20)
  - d) INSERT FORCE: MAX 3.0KG
  - e) TENSILE FORCE: MIN 3.0KG

				REVISION:	GENERAL TOLERANCE UNLESS SPECIFIED:	PREPARE BY:	Elamp Precision Industry(M) Sdn.Bhd.
				06	X.XXX ±0.05 X.XX ±0.10 X.X ±0.20 X ±0.50	KS YEW	
						REVIEWED BY:	ITEM NAME: 187 SERIES FEMALE TERMINAL
				SHEET OF:		CH ANG	
				EFFECTIVE DATE:		APPROVED BY:	ITEM NO: 171871F(0.8)-2T
06	19/8/11	ADD 7 & 8. UPDATE TO NEW FORMAT	-	1 / 1	19/8/11	CY CHUANG	DRAWING NO: EP-Q-196A
REV.	DATE	AMENDMENT	ECR NO:			SCALE : FREE UNIT : MM	