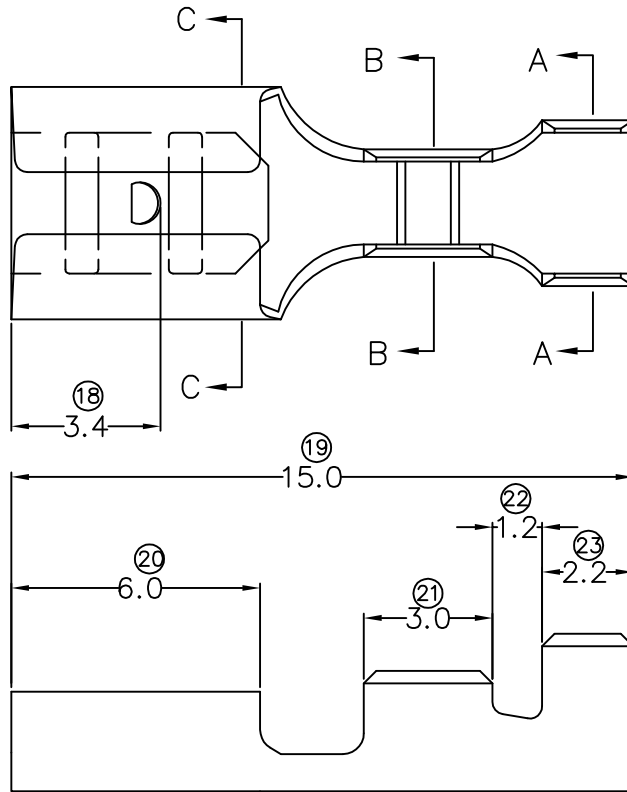
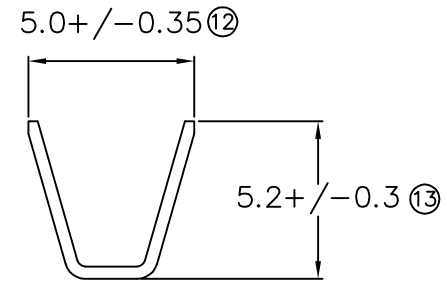


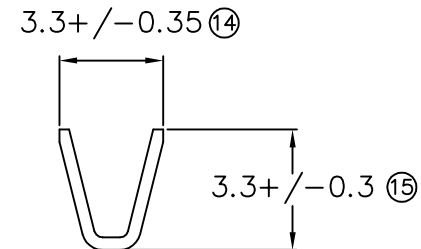
TERMINALS SPECIFICATION DRAWING



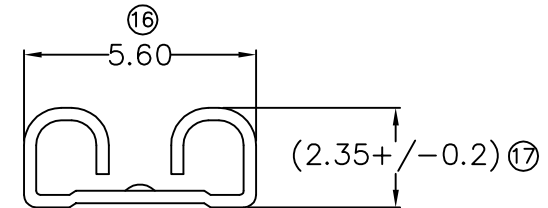
FOR REFERENCE ONLY



SECTION A-A



SECTION B-B



SECTION C-C

- 11) CRIMPING WIRE TENSILE FORCE IS BASE ON COPPER BREAK OFF INTENSITY.
- 10) TEMPERATURE RANGE -40°C TO +120°C.
- 9) VOLTAGE-MAX [VOLTS] PER WIRE SPECIFICATION.
- 8) ⑰ FOR REFERENCE ONLY.
- 7) MATCHING WITH TAB $\pm 0.5 \times W4.8$.
- 6) TENSILE FORCE : MIN 2.00KG.
- 5) INSERT FORCE : MAX 3.60KG.
- 4) THICKNESS PLATING MORE THAN 40μ INCH.
- 3) PACKING QTY : 9000 PCS/REEL.
- 2) WIRE INSULATION (O.D) : 3.0MM.
- 1) APPLICABLE WIRE RANGE : 0.99-0.44MM².

SPECIFICATION :

REVISION: 05	
SHEET OF : 1 / 1	

MATERIAL: t0.30 BRASS C2680	TIN PLATING	17187H-2
	NONE	17187H-1
	TREATMENT SELECTIVE	PART NUMBER
DIMENSIONS : MM	DWN: KS YEWE CHK: SC CHOO Y.L APVD: CHUANG	EPI Terminals & Connectors Elamp Precision Industry(M) Sdn.Bhd.
TOLERANCE UNLESS OTHERWISE SPECIFIED: X.XXX ± 0.05 X.XX ± 0.10 X.X ± 0.20 X ± 0.50	SCALE : FREE DRAWING NO: A1303	PART NAME: 187 SERIES FEMALE TERMINALS APPLICABLE (1) TERMINALS (2) HOUSING (1) 271874M (2) _____
EFFECTIVE DATE : 12/7/07		