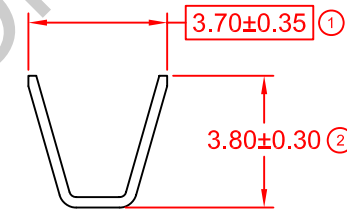
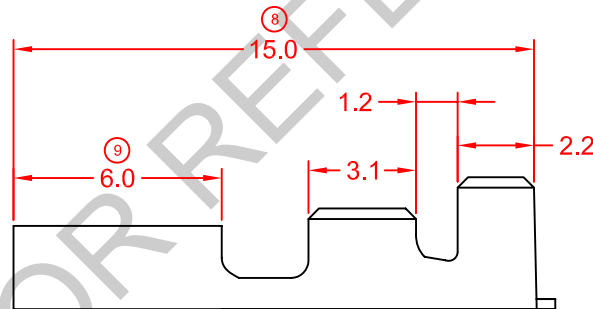
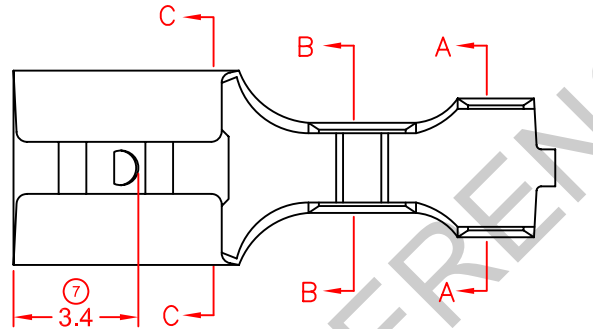
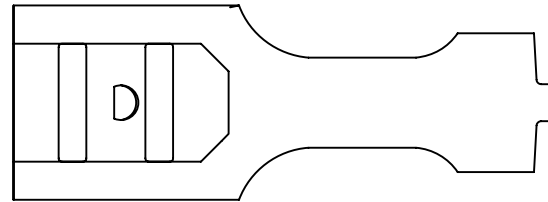
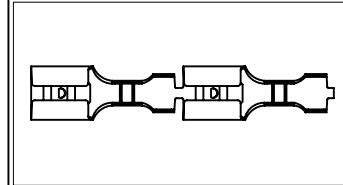


SPECIFICATION DRAWING

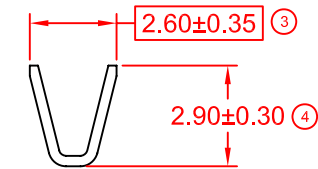
MASTER COPY

ITEM NO	MATERIAL	TREATMENT	QTY/REEL	REEL/CARTON	MATCHING PART(S)
17187M(0.8)-1	t0.3 BRASS (C2680)	NONE	10000PCS	4	TERMINAL-271874M(0.8), TAB t0.8XW4.8
17187M(0.8)-2	t0.3 BRASS (C2680)	TIN PLATING	10000PCS	4	HOUSING-N/A

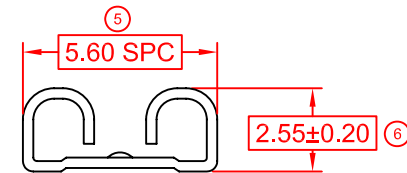
SYMBOL	DESCRIPTION
○	DIMENSION INSPECTED DURING SETUP AND OUTGOING.
□	DIMENSION INSPECTED HOURLY.
SPC	STATISTICALLY CONTROLLED DIMENSION.
△	JIG USED DURING INSPECTION.



SECTION A-A



SECTION B-B



SECTION C-C

REMARKS:

- a) PLATING THICKNESS MIN 40μ INCH
- b) SUGGESTED WIRE INSULATION (O.D): 2.3MM
- c) SUGGESTED WIRE RANGE: 0.74~0.34MM² (AWG16~20)
- d) INSERT FORCE: MAX 3.00KG
- e) TENSILE FORCE: MIN 2.00KG

			REVISION: 06		GENERAL TOLERANCE UNLESS SPECIFIED: X.XXX ±0.05 X.XX ±0.10 X.X ±0.20 X ±0.50	PREPARE BY: KS YEW		Elamp Precision Industry(M) Sdn.Bhd.
						REVIEWED BY: CH ANG		
			SHEET OF: 1 / 1		EFFECTIVE DATE: 14/9/11		APPROVED BY: CY CHUANG	
06	14/9/11	UPDATE TO NEW FORMAT			SCALE : FREE		ITEM NO: 17187M(0.8)-1, 2	
REV.	DATE	AMENDMENT	ECR NO:		UNIT : MM		DRAWING NO: EP-Q-44A	