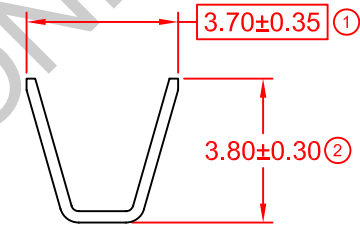
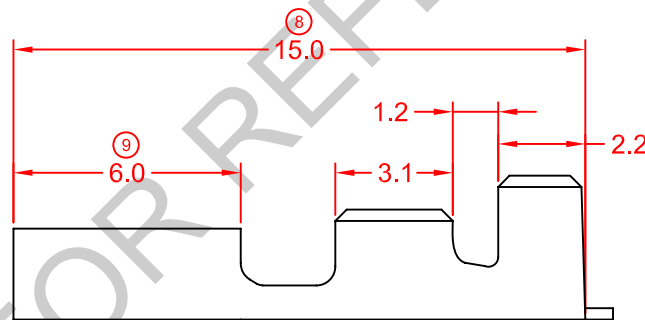
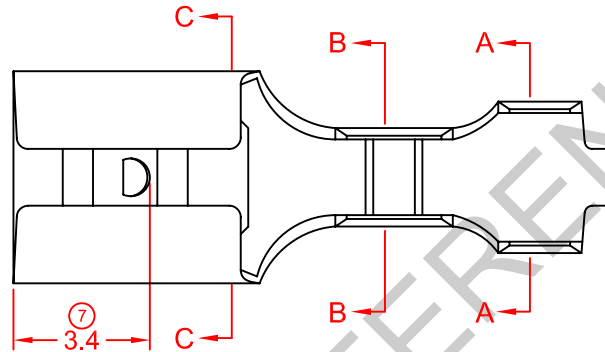
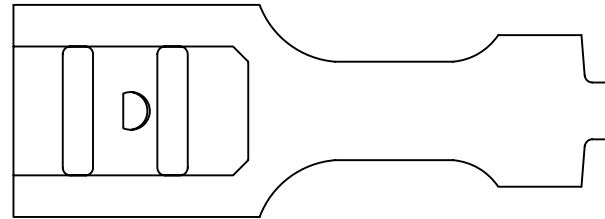
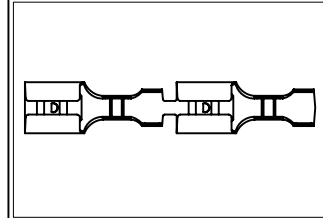


SPECIFICATION DRAWING

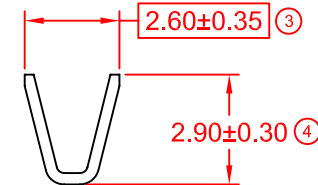
MASTER COPY

ITEM NO	MATERIAL	TREATMENT	QTY/REEL	REEL/CARTON	MATCHING PART(S)
17187M-1	t0.3 BRASS (C2680)	NONE	10000PCS	4	TERMINAL-271874M, TAB t0.5XW4.8
17187M-2	t0.3 BRASS (C2680)	TIN PLATING	10000PCS	4	HOUSING-N/A

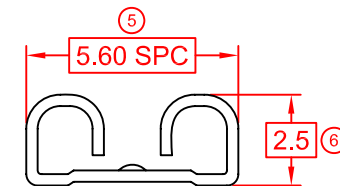
SYMBOL	DESCRIPTION
○	DIMENSION INSPECTED DURING SETUP AND OUTGOING.
□	DIMENSION INSPECTED HOURLY.
SPC	STATISTICALLY CONTROLLED DIMENSION.
△	JIG USED DURING INSPECTION.



SECTION A-A



SECTION B-B



SECTION C-C

REMARKS:

- a) PLATING THICKNESS MIN 40μ INCH
- b) SUGGESTED WIRE INSULATION (O.D): 2.3MM
- c) SUGGESTED WIRE RANGE: 0.74~0.34MM² (AWG16-20)
- d) INSERT FORCE: MAX 3.5KG
- e) TENSILE FORCE: MIN 3.0KG

REV.	DATE	AMENDMENT	ECR NO:	SHEET OF:	EFFECTIVE DATE:	SCALE : FREE UNIT : MM	APPROVED BY: CY CHUANG	PREPARE BY: KS YEW	REVIEWED BY: CH ANG	GENERAL TOLERANCE UNLESS SPECIFIED:	ITEM NAME: 187 SERIES FEMALE TERMINAL
08	16/11/11	d)FR INSERT FORCE: MAX 3.0KG TO MAX 3.5KG, e)TENSIL FORCE MIN 2.0KG TO MIN 3.0KG	11-11-55	1/1	16/11/11					X.XXX ±0.05 X.XX ±0.10 X.X ±0.20 X ±0.50	ITEM NO: 17187M-1, 2
07	21/9/11	UPDATE TO NEW FORMAT	-								DRAWING NO: EP-Q-43A

EP Elamp Precision Industry(M) Sdn.Bhd.