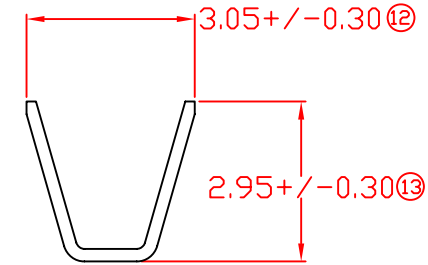
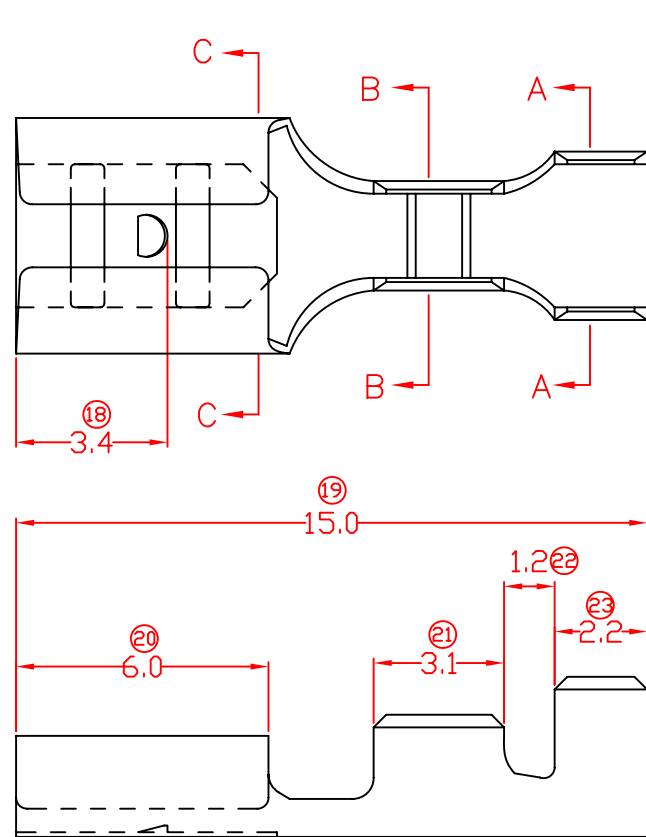
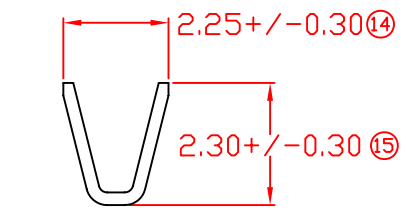


TERMINALS SPECIFICATION DRAWING

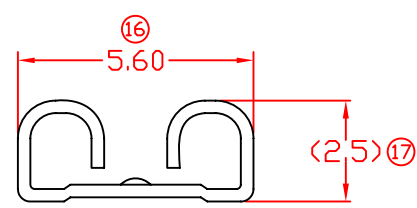
UNCONTROLLED COPY



SECTION A-A



SECTION B-B



SECTION C-C

☐ MATCHING DIMENSION

- 11) CRIMPING WIRE TENSILE FORCE IS BASE ON COPPER BREAK OFF INTENSITY.
- 10) TEMPERATURE RANGE -40°C TO +120°C.
- 9) VOLTAGE-MAX [VOLTS] PER WIRE SPECIFICATION.
- 8) (17) FOR REFERENCE ONLY.
- 7) MATCHING WITH TAB t0.5 X W4.8.
- 6) TENSILE FORCE : MIN 2.00KG.
- 5) INSERT FORCE : MAX 3.00KG.
- 4) THICKNESS PLATING MORE THAN 40μ INCH.
- 3) PACKING QTY : 10000 PCS/REEL.
- 2) WIRE INSULATION (O.D) : 1.7MM.
- 1) APPLICABLE WIRE RANGE : 0.43-0.19MM².

FOR REFERENCE ONLY

MATERIAL: t0.30 BRASS C2680	TIN PLATING	17187S-2
	NONE	17187S-1
	TREATMENT SELECTIVE	PART NUMBER
DIMENSIONS : MM	PREPARE BY: KS YEW	Terminals & Connectors Elamp Precision Industry(M) Sdn.Bhd.
TOLERANCE UNLESS OTHERWISE SPECIFIED:	REVIEWED BY: CH ANG	
X.XXX +/-0.05 X.XX +/-0.10 X.X +/-0.20 X +/-0.50	APPROVED BY: CY CHUANG	PART NAME: 187 SERIES FEMALE TERMINALS
	SCALE : FREE	APPLICABLE (1) TERMINALS (2) HOUSING
EFFECTIVE DATE : 5/8/11	DRAWING NO: A1322	(1) 271874M (2) -

SPECIFICATION :

04	5/8/11	(17) (2.35±0.2) CHANGE TO (2.5), 5)INSERT FORCE: FR MAX 3.60KG TO 3.00KG	REVISION: 04		SHEET OF : 1 / 1				
REV.	DATE	AMENDMENT							