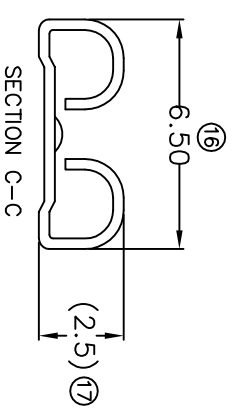
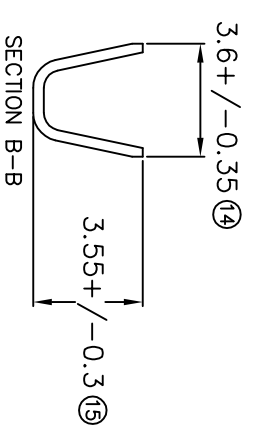
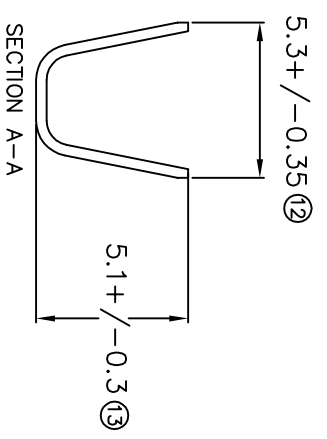
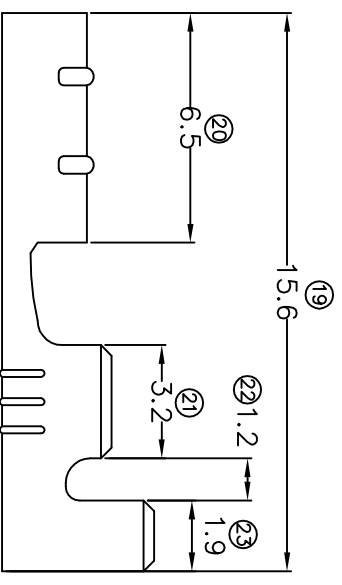
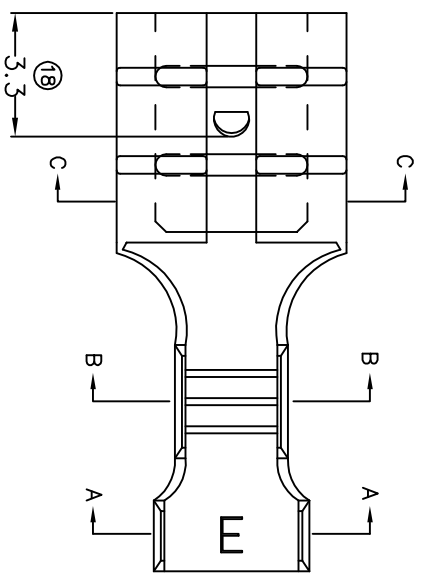


# TERMINALS SPECIFICATION DRAWING



FOR REFERENCE ONLY

- 11) CRIMPING WIRE TENSILE FORCE IS BASE ON COPPER BREAK OFF INTENSITY.
- 10) TEMPERATURE RANGE -40°C TD +120°C.
- 9) VOLTAGE-MAX [VOLTS] PER WIRE SPECIFICATION.
- 8) (17) FOR REFERENCE ONLY.
- 7) MATCHING WITH TAB ±0.5 X W5.2.
- 6) TENSILE FORCE : MIN 3.00KG.
- 5) INSERT FORCE : MAX 3.00KG.
- 4) THICKNESS PLATING MORE THAN 40µ INCH.
- 3) PACKING QTY : 7000 PCS/REEL.
- 2) WIRE INSULATION (O.D) : 3.0MM.
- 1) APPLICABLE WIRE RANGE : 1.03-0.46MM<sup>2</sup>.

SPECIFICATION :

<b>MATERIAL:</b> ±0.30 BRASS C2680	<b>TIN PLATING</b>			
<b>DIMENSIONS :</b> MM	DWN: KS YEWE			
<b>TOLERANCE UNLESS OTHERWISE SPECIFIED:</b>	CHK: SC CHOO			
X.XXX +/-0.05	APVD: CHUANG			
X.XX +/-0.10	SCALE : FREE			
X.X +/-0.20	DRAWING NO:			
X +/-0.50				
<b>EFFECTIVE DATE :</b> 12/7/07	<b>A1349</b>			
<b>REVISION:</b> 03	<b>PART NAME:</b> 205 SERIES FEMALE TERMINALS			
	<b>APPLICABLE (1) TERMINALS (2) HOUSING</b>			
<b>SHEET OF :</b> 1 / 1	<b>(1) TAB ±0.5 X W5.2</b>			
	<b>(2) —</b>			

**EPI** Terminals & Connectors  
Elamp Precision Industry(M) Sdn.Bhd.