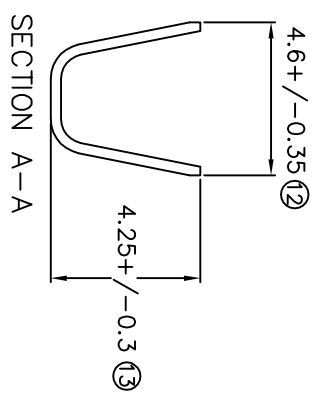
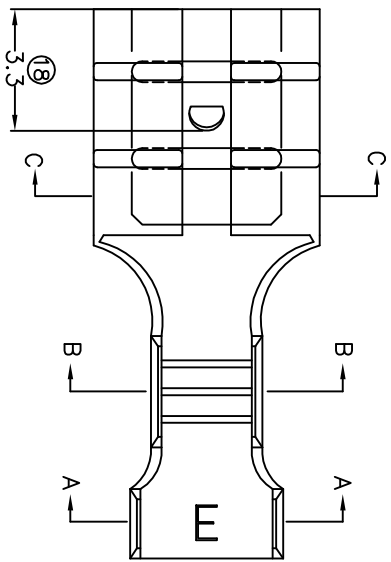
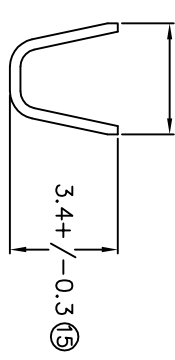


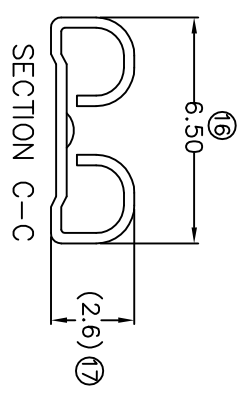
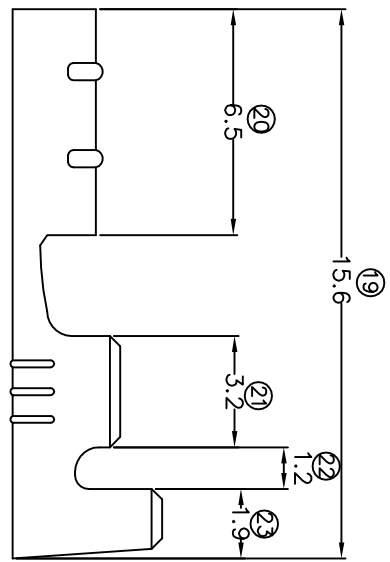
TERMINALS SPECIFICATION DRAWING



3.3+/-0.35 (14)



SECTION B-B



SECTION C-C

FOR REFERENCE ONLY

- 11) CRIMPING WIRE TENSILE FORCE IS BASE ON COPPER BREAK OFF INTENSITY.
- 10) TEMPERATURE RANGE -40°C TD +120°C.
- 9) VOLTAGE-MAX [VOLT(S)] PER WIRE SPECIFICATION.
- 8) (17) FOR REFERENCE ONLY.
- 7) MATCHING WITH TAB t0.8 X W5.2.
- 6) TENSILE FORCE : MIN 3.00KG.
- 5) INSERT FORCE : MAX 3.00KG.
- 4) THICKNESS PLATING MORE THAN 40µ INCH.
- 3) PACKING QTY : 8000 PCS/REEL.
- 2) WIRE INSULATION (O.D) : 2.6MM.
- 1) APPLICABLE WIRE RANGE : 0.95-0.42MM².

SPECIFICATION :

MATERIAL: t0.30 BRASS C2680	TIN PLATING		17205M(0.8)-2
DIMENSIONS : MM	TREATMENT SELECTIVE		17205M(0.8)-1
TOLERANCE UNLESS OTHERWISE SPECIFIED: X.XXX +/-0.05 X.XX +/-0.10 X.X +/-0.20 X +/-0.50	DWN: KS YEW	EPI Terminals & Connectors Elamp Precision Industry(M) Sdn.Bhd.	PART NUMBER
REVISION: 03	CHK: SC CHOO	APVD: CHUANG	PART NAME: 205 SERIES FEMALE TERMINALS
	SCALE : FREE	DRAWING NO: A1327	APPLICABLE (1) TERMINALS (2) HOUSING
SHEET OF : 1 / 1	EFFECTIVE DATE : 17/7/07		(1) TAB t0.8 X W5.2 (2) _____