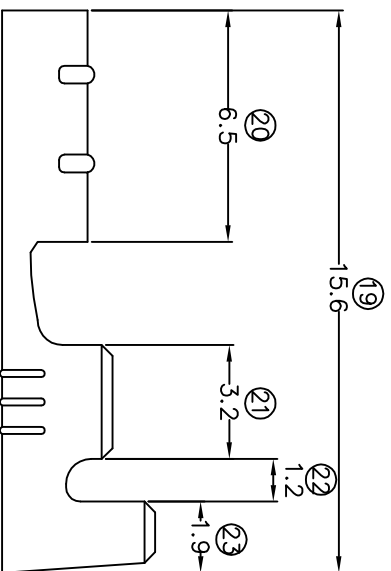
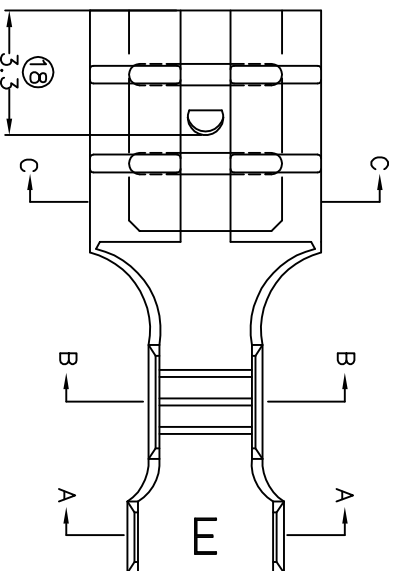
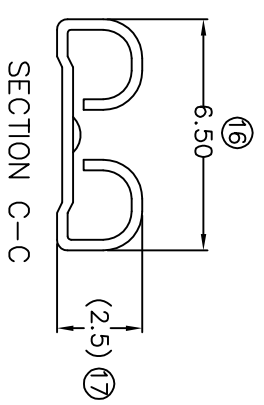
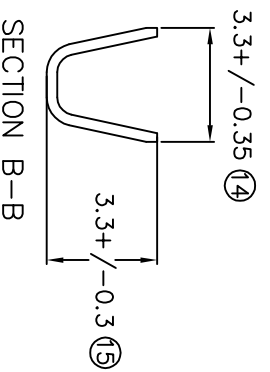
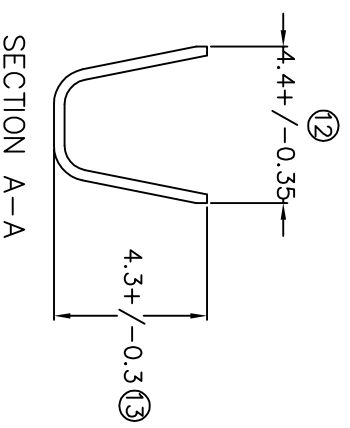


TERMINALS SPECIFICATION DRAWING



FOR REFERENCE ONLY

- 11) CRIMPING WIRE TENSILE FORCE IS BASE ON COPPER BREAK OFF INTENSITY,
- 10) TEMPERATURE RANGE -40°C TO +120°C,
- 9) VOLTAGE-MAX [VOLTS] PER WIRE SPECIFICATION,
- 8) ¹⁷ FOR REFERENCE ONLY,
- 7) MATCHING WITH TAB 40.5 X W5.2,
- 6) TENSILE FORCE : MIN 3.00KG,
- 5) INSERT FORCE : MAX 3.00KG,
- 4) THICKNESS PLATING MORE THAN 40m INCH,
- 3) PACKING QTY : 8000 PCS/REEL,
- 2) WIRE INSULATION (I.D.) : 2.6MM,
- 1) APPLICABLE WIRE RANGE : 0.96-0.43MM?



MATERIAL: 10.30 BRASS		TIN PLATING	
C2680		NONE	
DIMENSIONS : MM		TREATMENT SELECTIVE	
TOLERANCE UNLESS OTHERWISE SPECIFIED:		PART NUMBER	
X.XXX +/-0.05		17205M-2	
X.XX +/-0.10		17205M-1	
X.X +/-0.20		PART NAME:	
X +/-0.50		Eiamp Precision Industry(M) Sdn.Bhd.	
EFFECTIVE DATE : 12/7/07		PART NAME: 205 SERIES FEMALE TERMINALS	
DWN: KS YEW		APPLICABLE (1) TERMINALS (2) HOUSING	
CHK: SC CHOO		(1) TAB 40.5 X W5.2	
APVD: CHUANG		(2) _____	
SCALE : FREE			
DRAWING NO: A1284			

SPECIFICATION :

REVISION: 03	SHEET OF : 1 / 1
-----------------	---------------------