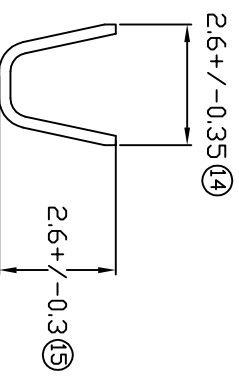
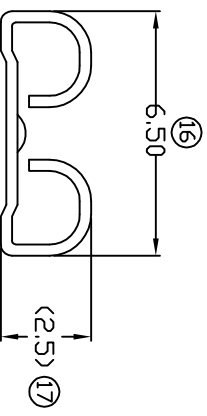
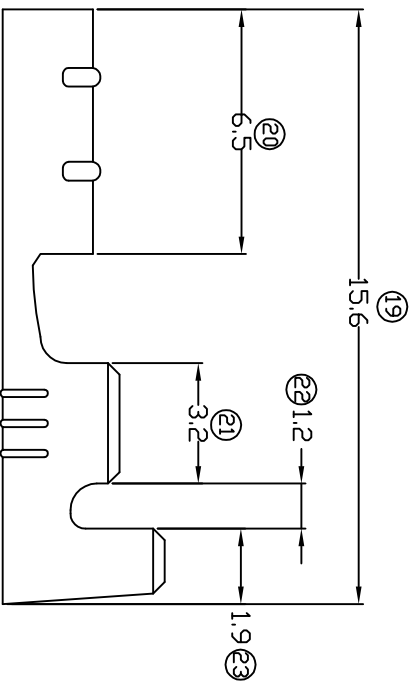
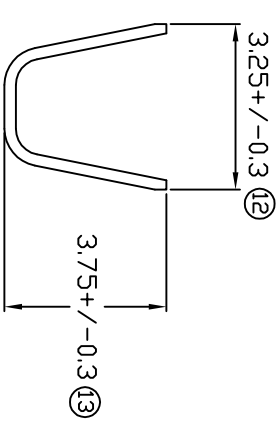
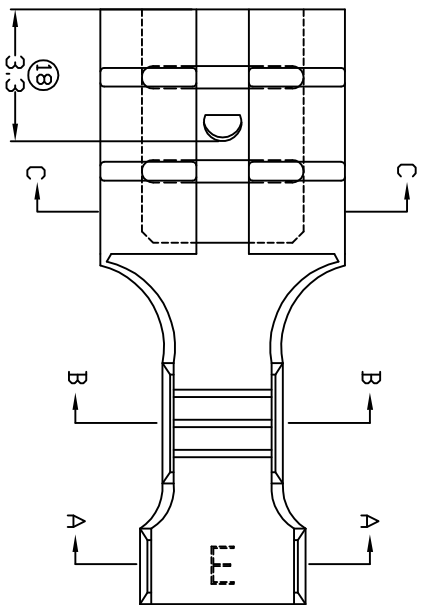


TERMINALS SPECIFICATION DRAWING



FOR REFERENCE ONLY

- 11) CRIMPING WIRE TENSILE FORCE IS BASE ON COPPER BREAK OFF INTENSITY.
- 10) TEMPERATURE RANGE -40°C TO +120°C.
- 9) VOLTAGE-MAX (VOLTS) PER WIRE SPECIFICATION.
- 8) 17 FOR REFERENCE ONLY.
- 7) MATCHING WITH TAB ±0.5 X W/5.2.
- 6) TENSILE FORCE : MIN 2.70KG.
- 5) INSERT FORCE : MAX 3.75KG.
- 4) THICKNESS PLATING MORE THAN 40µ INCH.
- 3) PACKING QTY : 10000 PCS/REEL.
- 2) WIRE INSULATION (O.D) : 2.1MM.
- 1) APPLICABLE WIRE RANGE : 0.58-0.26MM².

SPECIFICATION :

| | | | |
|--|-------------|----------------------------|--------------------------------------|
| MATERIAL: | 10.30 BRASS | TIN PLATING | 17205S-2 |
| | C2680 | NONE | 17205S-1 |
| DIMENSIONS : | MM | TREATMENT SELECTIVE | PART NUMBER |
| TOLERANCE UNLESS OTHERWISE SPECIFIED: | | DWN: KS YE W | EPI Terminals & Connectors |
| X.XXX | +/-0.05 | CHK: SC CHOO | Elamp Precision Industry(M) Sdn.Bhd. |
| X.XX | +/-0.10 | APVD: CHUANG | PART NAME: |
| X.X | +/-0.20 | SCALE : FREE | 205 SERIES FEMALE TERMINALS |
| X | +/-0.50 | DRAWING NO: | APPLICABLE (1) TERMINALS (2) HOUSING |
| | | A1457 | (1) TAB ±0.5 X W/5.2 |
| SHEET OF : | 1 / 1 | | (2) - |
| EFFECTIVE DATE : | 24/7/07 | | |