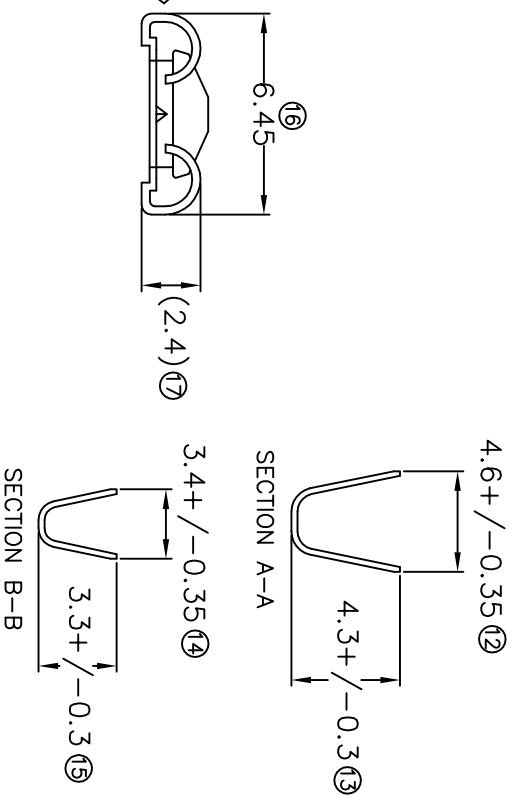
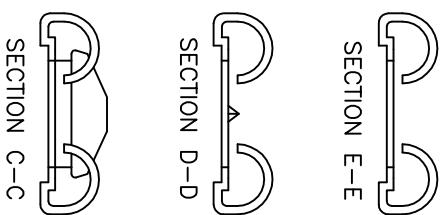
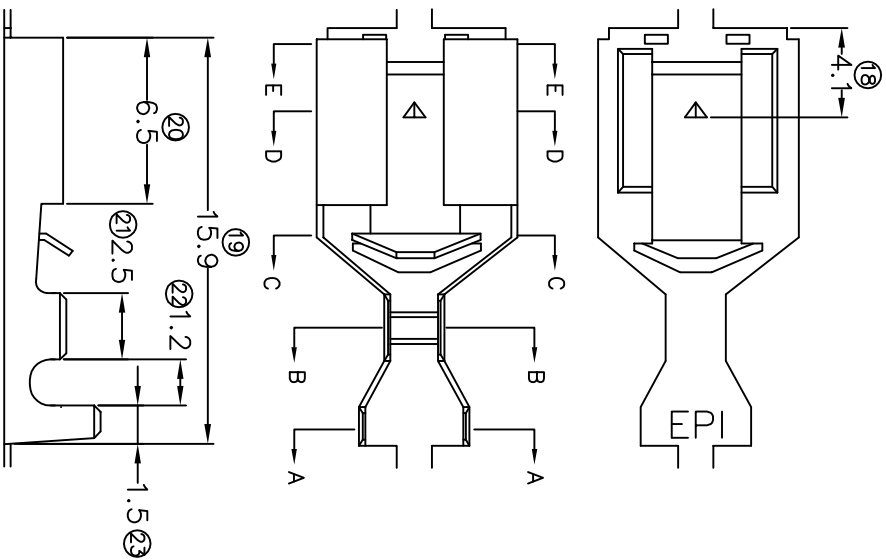
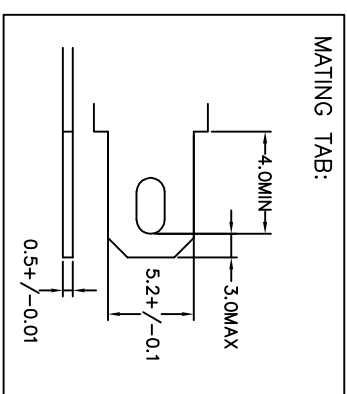


TERMINALS SPECIFICATION DRAWING



FOR REFERENCE ONLY



- 11) CRIMPING WIRE TENSILE FORCE IS BASE ON COPPER BREAK OFF INTENSITY.
 10) TEMPERATURE RANGE -40°C TO +120°C.
 9) VOL TAGE-MAX (V/DLTS) PER WIRE SPECIFICATION.
 8) (17) FOR REFERENCE ONLY.
 7) MATCHING WITH TAB t0.5 X W5.2.
 6) TENSILE FORCE : MIN 5.00KG.
 5) INSERT FORCE : MAX 3.20KG.
 4) THICKNESS PLATING MORE THAN 40µ INCH.
 3) PACKING QTY : 7500 PCS/REEL.
 2) WIRE INSULATION (O.D) : 2.6MM.
 1) APPLICABLE WIRE RANGE : 0.91-0.40MM².

| | | | |
|--|--|--|--|
| MATERIAL: t0.3 BRASS C2680 | | TIN PLATING NONE | |
| DIMENSIONS : MM | | DWN: KS YE W | |
| TOLERANCE UNLESS OTHERWISE SPECIFIED: X.XXX +/-0.05 X.XX +/-0.10 X.X +/-0.20 X +/-0.50 | | CHK: SC CHOO APVD: CHUANG SCALE : FREE DRAWING NO: | |
| EFFECTIVE DATE : 12/7/07 | | A1320 | |
| REVISION: 03 | | PART NAME: 205 SERIES FEMALE TERMINALS | |
| SHEET OF : 1 / 1 | | APPLICABLE (1) TERMINALS (2) HOUSING (1) TAB t0.5 X W5.2 (2) _____ | |

SPECIFICATION: