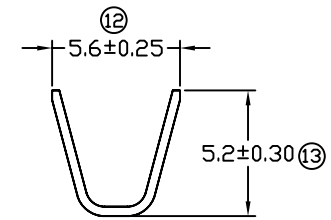
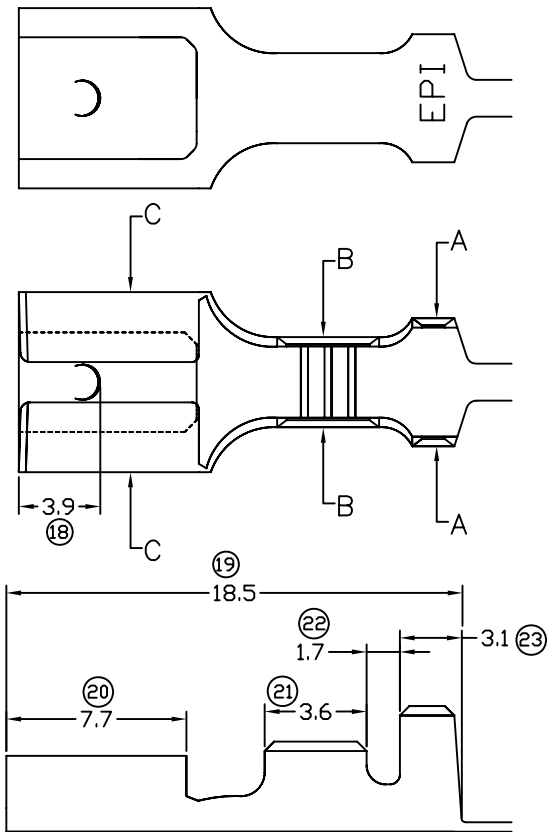
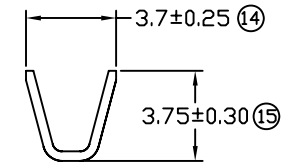


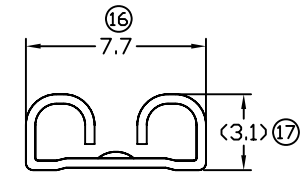
# TERMINALS SPECIFICATION DRAWING



SECTION A-A



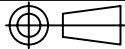
SECTION B-B



SECTION C-C

- 11) CRIMPING WIRE TENSILE FORCE IS BASE ON COPPER BREAK OFF INTENSITY.
- 10) TEMPERATURE RANGE -40°C TO +120°C.
- 9) VOLTAGE-MAX [VOLTS] PER WIRE SPECIFICATION.
- 8) ⑦ FOR REFERENCE USE ONLY
- 7) MATCHING WITH TAB t0.8 X W6.35
- 6) THICKNESS PLATING MORE THAN 40μ INCH.
- 5) TENSILE FORCE : MIN 3.00KG.
- 4) INSERT FORCE : MAX 3.50KG.
- 3) PACKING QTY : 5000 PCS/REEL.
- 2) WIRE INSULATION (O.D) : 3.1MM.
- 1) APPLICABLE WIRE RANGE : 1.63-0.83MM<sup>φ</sup>

**FOR REFERENCE ONLY**

MATERIAL: t0.40 BRASS C2680	TIN PLATING	172502-2
	NONE	172502-1
	TREATMENT SELECTIVE	PART NUMBER
DIMENSIONS : MM  TOLERANCE UNLESS OTHERWISE SPECIFIED: X.XXX +/-0.05 X.XX +/-0.10 X.X +/-0.20 X +/-0.50	DWN: KS YEW CHK: C.Y CHUANG APVD: Y.L CHUANG SCALE : FREE DRAWING NO: A1488	<b>EPI</b> Terminals & Connectors Elamp Precision Industry(M) Sdn.Bhd. PART NAME: 250 SERIES FEMALE TERMINALS APPLICABLE (1) TERMINALS (2) HOUSING (1) TAB t0.80 X W6.35 (2) -
REVISION: 02  SHEET OF : 1 / 1	EFFECTIVE DATE : 20/10/09	

**SPECIFICATION :**

REV.	DATE	AMENDMENT
02	20/10/09	4)INSERT FORCE: MAX 4.50KG CHANGE TO 3.50KG, 5)TENSILE FORCE: MIN 5.00KG CHANGE TO 3.00KG.