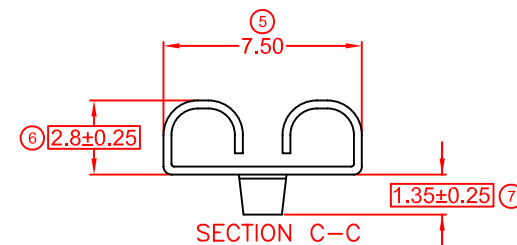
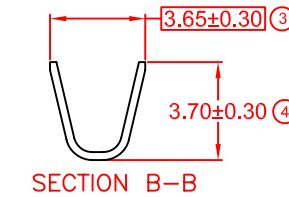
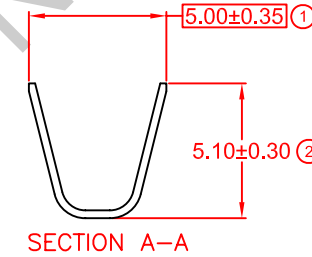
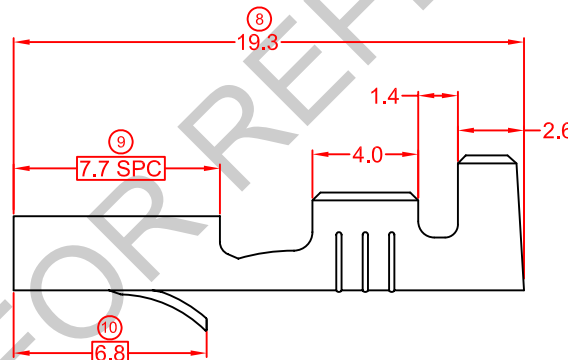
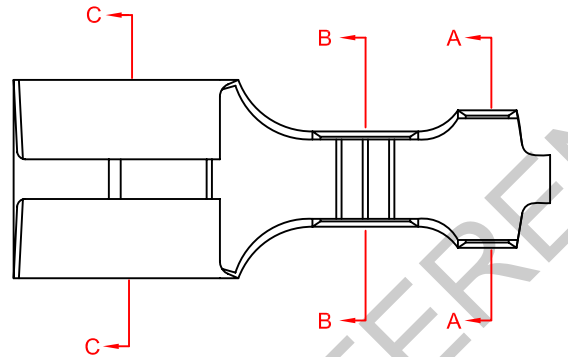
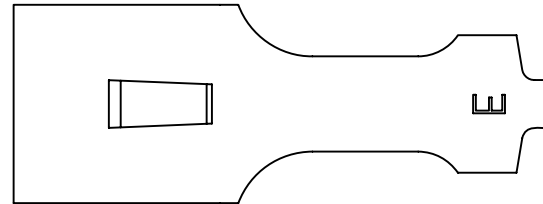
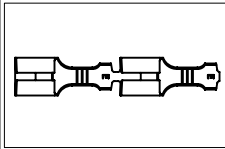


SPECIFICATION DRAWING

MASTER COPY

ITEM NO	MATERIAL	TREATMENT	QTY/REEL	REEL/CARTON	MATCHING PART(S)
172503M-1	t0.30 BRASS (C2680)	NONE	5000 PCS	4	TERMINAL-272503, TAB t0.8XW6.0, ATY FUSE t0.65XW5.3
172503M-2	t0.30 BRASS (C2680)	TIN-PLATING	5000 PCS	4	
172503M-2T	t0.30 BRASS (C2680)	PRE-TIN PLATED	5000 PCS	4	HOUSING-250 SERIES

SYMBOL	DESCRIPTION
○	DIMENSION INSPECTED DURING SETUP AND OUTGOING.
□	DIMENSION INSPECTED HOURLY.
SPC	STATISTICALLY CONTROLLED DIMENSION.
△	JIG USED DURING INSPECTION.



REMARKS:

- a) PLATING THICKNESS MIN 40μ INCH
- b) SUGGESTED WIRE INSULATION (O.D): 2.9MM
- c) SUGGESTED WIRE RANGE: 1.18-0.53MM² (AWG16-20)
- d) INSERT FORCE: MAX 2.0KG
- e) TENSILE FORCE: MIN 0.5KG

GENERAL TOLERANCE UNLESS SPECIFIED:	PREPARE BY: KS YEW	Elamp Precision Industry(M) Sdn.Bhd.
	REVIEWED BY: CH ANG	
	APPROVED BY: CY CHUANG	ITEM NAME: 250 SERIES FEMALE TERMINAL
	EFFECTIVE DATE: 11/8/11	SCALE : FREE UNIT : MM
REVISION: 10	DRAWING NO: EP-Q-24A	
SHEET OF: 1 / 1		

REV.	DATE	AMENDMENT	ECR NO:
10	11/8/11	UPDATE TO NEW FORMAT	-