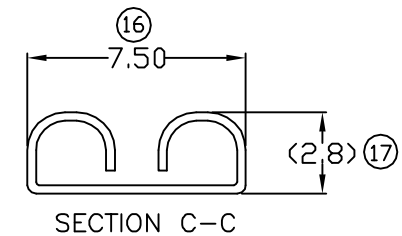
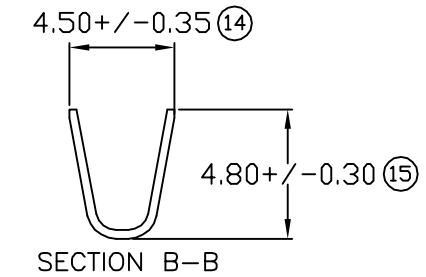
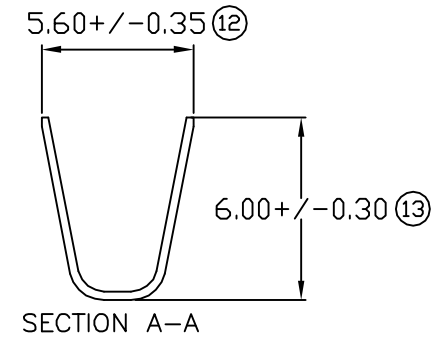
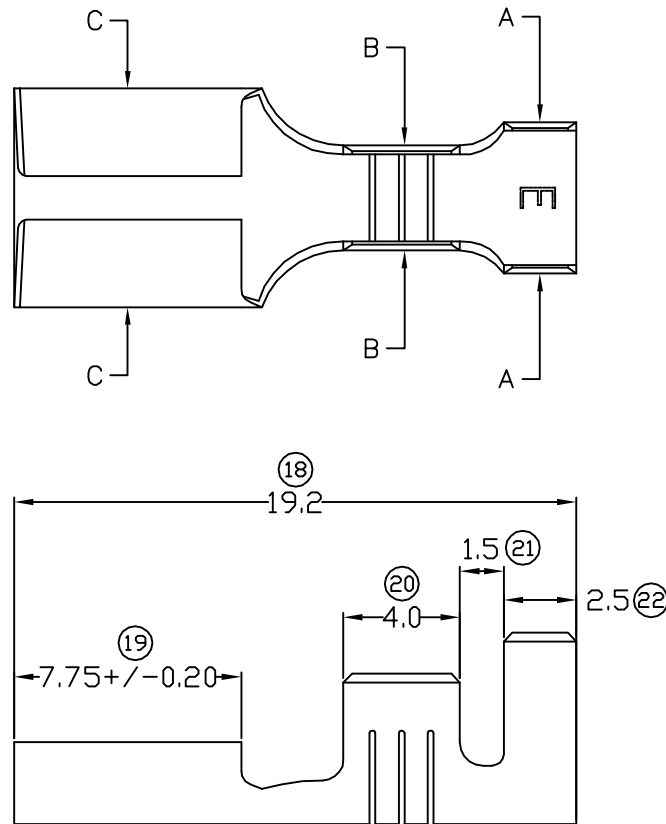


TERMINALS SPECIFICATION DRAWING



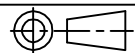
- 11) CRIMPING WIRE TENSILE FORCE IS BASE ON COPPER BREAK OFF INTENSITY.
- 10) TEMPERATURE RANGE -40°C TO $+120^{\circ}\text{C}$.
- 9) VOLTAGE-MAX [VOLTS] PER WIRE SPECIFICATION.
- 8) (17) FOR REFERENCE ONLY.
- 7) MATCHING WITH TAB t0.8 X W6.0.
- 6) TENSILE FORCE : MIN 0.50KG.
- 5) INSERT FORCE : MAX 1.80KG.
- 4) THICKNESS PLATING MORE THAN 40μ INCH.
- 3) PACKING QTY : 4000 PCS/REEL.
- 2) WIRE INSULATION (O.D) : 3.5MM.
- 1) APPLICABLE WIRE RANGE : 2.10-0.94MM².

SPECIFICATION :

REV.	DATE	AMENDMENT
06	18/3/09	5) INSERT FORCE: MAX 2.40KG CHANGE TO MAX 1.80KG. 6) TENSILE FORCE: MIN 0.60KG CHANGE TO MIN 0.50KG.

FOR REFERENCE ONLY

REVISION:
06



SHEET OF :
1 / 1

MATERIAL:
t0.30 BRASS
C2680

DIMENSIONS : MM

TOLERANCE UNLESS OTHERWISE SPECIFIED:

X.XXX ± 0.05
X.XX ± 0.10
X.X ± 0.20
X ± 0.50

EFFECTIVE DATE :
18/3/09

PRE-TIN PLATED	172505H-2T
TIN PLATED	172505H-2
NONE	172505H-1
TREATMENT SELECTIVE	PART NUMBER

DWN: KS YEW

CHK: C.Y
CHUANG

APVD: Y.L
CHUANG

SCALE : FREE

DRAWING NO:

A1255

EPI Terminals & Connectors
Elamp Precision Industry(M) Sdn.Bhd.

PART NAME:
250 SERIES FEMALE TERMINALS
APPLICABLE (1) TERMINALS (2) HOUSING
(1) 272505S/M/H
(2) CN2FSL SERIES