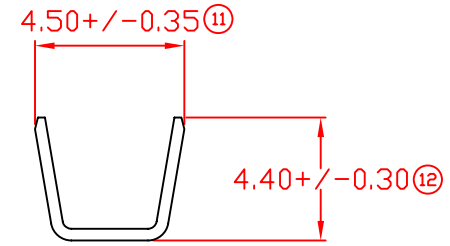
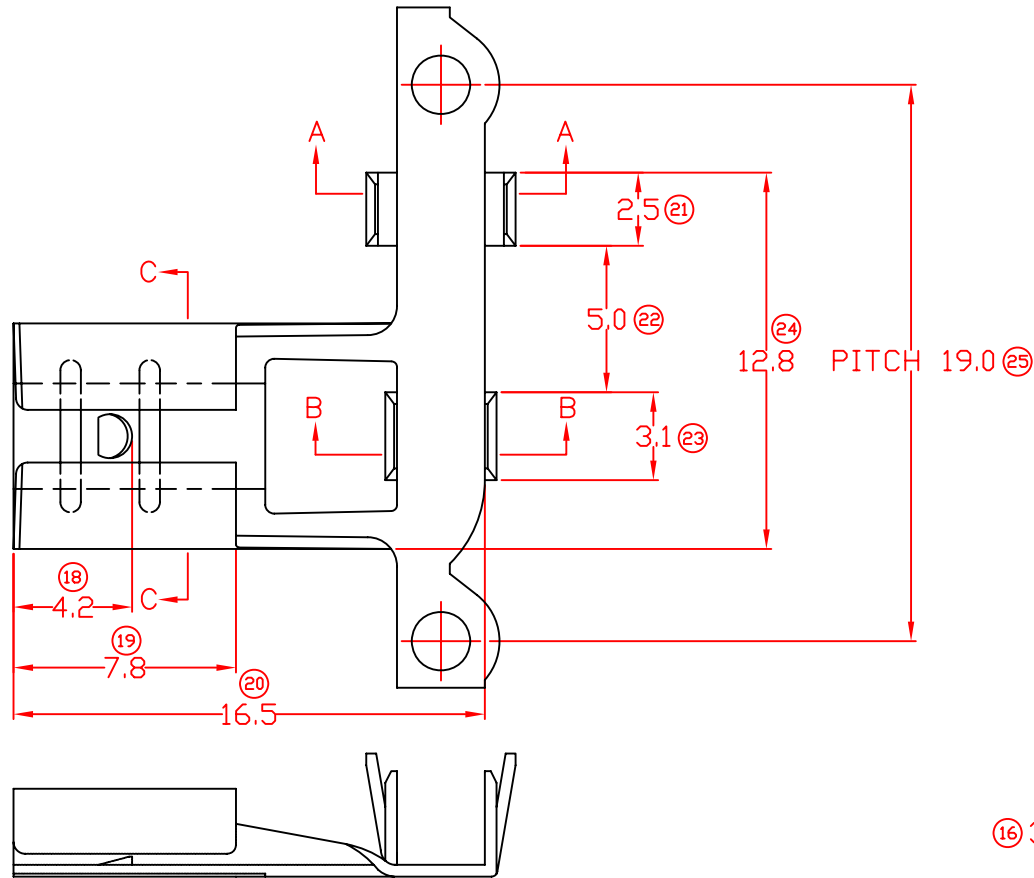
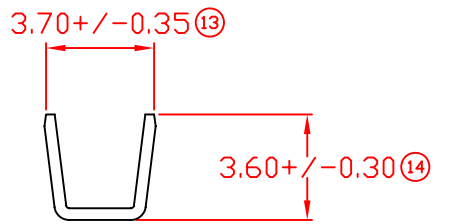


TERMINALS SPECIFICATION DRAWING

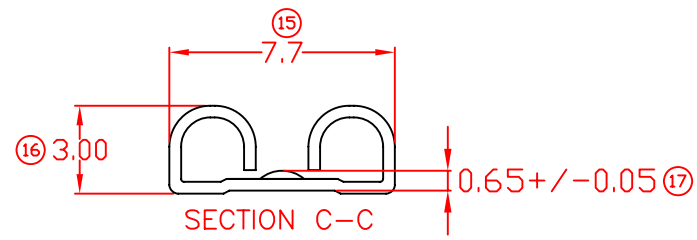
UNCONTROLLED COPY



SECTION A-A



SECTION B-B



SECTION C-C

- 10) THIS DRAWING REPRESENTS THE SPECIFICATION OF THE ITEM, EPI SHALL NOT BE RESPONSIBLE FOR ANY PROBLEM IF THE ITEM CONFIRMS WITH THE STANDARD OF THE SPECIFICATION.
- 9) CRIMPING WIRE TENSILE FORCE IS BASE ON COPPER BREAK OFF INTENSITY.
- 8) TEMPERATURE RANGE -40°C TO +120°C.
- 7) VOLTAGE-MAX [VOLTS] PER WIRE SPECIFICATION.
- 6) (15) FOR REFERENCE ONLY.
- 5) MATCHING WITH TAB t0.8 X W6.3.
- 4) THICKNESS PLATING MORE THAN 40μ INCH.
- 3) PACKING QTY : 2500 PCS/REEL.
- 2) WIRE INSULATION (O.D) : 2.7MM.
- 1) APPLICABLE WIRE RANGE : 2.02-1.03MM².

FOR REFERENCE ONLY

MATERIAL: t0.40 BRASS C2680	PRE-TIN PLATED	17250FL-2T
	TIN PLATING	17250FL-2
	NONE	17250FL-1
	TREATMENT SELECTIVE	PART NUMBER
DIMENSIONS : MM TOLERANCE UNLESS OTHERWISE SPECIFIED: X.XXX +/-0.05 X.XX +/-0.10 X.X +/-0.20 X +/-0.50	PREPARE BY: KS YEW REVIEWED BY: CH ANG APPROVED BY: CY CHUANG SCALE : FREE DRAWING NO: A1295	Terminals & Connectors Elamp Precision Industry(M) Sdn.Bhd. PART NAME: 250 SERIES FEMALE TERMINALS APPLICABLE (1) TERMINALS (2) HOUSING (1) TAB t0.8 X W6.3 (2) -

SPECIFICATION :

REV.	DATE	AMENDMENT
06	18/8/10	ADD ITEM 17250FL-2T
05	26/3/09	OLD REV. 5)INSERT FORCE : MAX 5.50KG & 6)TENSILE FORCE : MIN 3.00KG DELETED, (16) (2.9+/-0.2) CHANGE TO 3.00.

REVISION: 06
SHEET OF : 1 / 1

EFFECTIVE DATE :
18/8/10