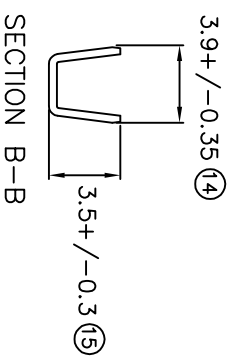
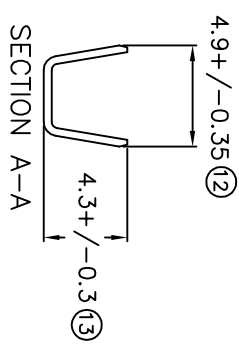
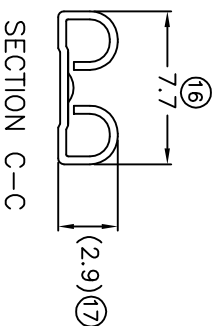
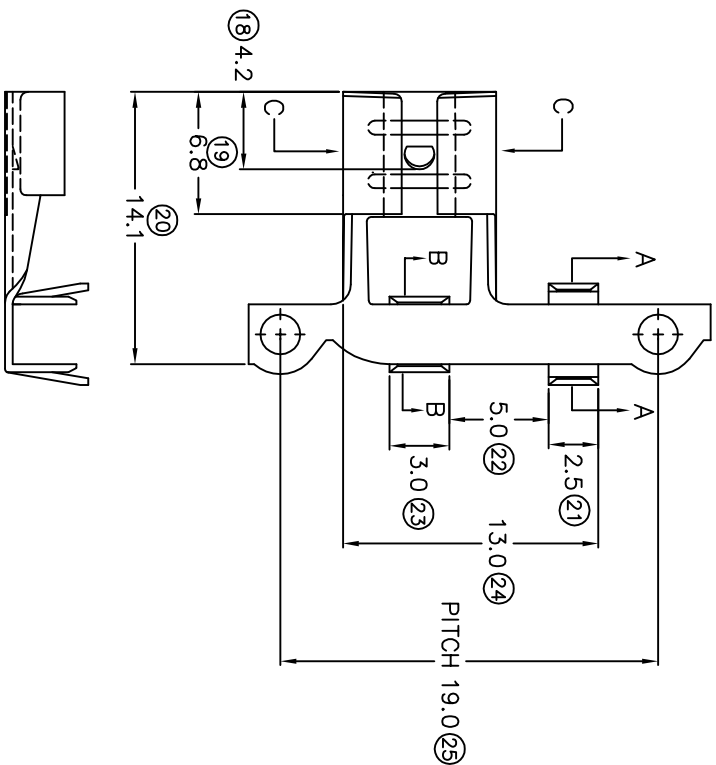


# TERMINALS SPECIFICATION DRAWING



FOR REFERENCE ONLY

- 11) CRIMPING WIRE TENSILE FORCE IS BASE ON COPPER BREAK OFF INTENSITY.
- 10) TEMPERATURE RANGE -40°C TD +120°C.
- 9) VOLTAGE-MAX [VOLTS] PER WIRE SPECIFICATION.
- 8) (17) FDR REFERENCE ONLY.
- 7) MATCHING WITH TAB ±0.8 X W6.3.
- 6) TENSILE FORCE : MIN 4.00KG.
- 5) INSERT FORCE : MAX 4.50KG.
- 4) THICKNESS PLATING MORE THAN 40µ INCH.
- 3) PACKING QTY : 3000 PCS/REEL.
- 2) WIRE INSULATION (O.D) : 2.7MM.
- 1) APPLICABLE WIRE RANGE : 2.00-1.04MM<sup>2</sup>.

SPECIFICATION :

<b>MATERIAL:</b> t0.4 BRASS C2680	<b>TIN PLATING</b>	
<b>DIMENSIONS :</b> MM	<b>TREATMENT SELECTIVE</b>	<b>PART NUMBER</b>
<b>TOLERANCE UNLESS OTHERWISE SPECIFIED:</b>	<b>CHK: SC CHOO</b>	17250FS-2
X.XXX +/-0.05	<b>APVD: CHUANG</b>	17250FS-1
X.XX +/-0.10	<b>SCALE : FREE</b>	
X.X +/-0.20	<b>DRAWING NO:</b>	
X +/-0.50	<b>A1201</b>	
<b>EFFECTIVE DATE :</b> 23/7/07	<b>EPJ</b> Terminals & Connectors Elamp Precision Industry(M) Sdn.Bhd.	
<b>REVISION:</b> 03	<b>PART NAME:</b> 250 SERIES FEMALE TERMINALS	
	<b>APPLICABLE (1) TERMINALS (2) HOUSING</b>	
<b>SHEET OF :</b> 1 / 1	<b>(1) TAB t0.80 X W6.3</b>	
	<b>(2) _____</b>	