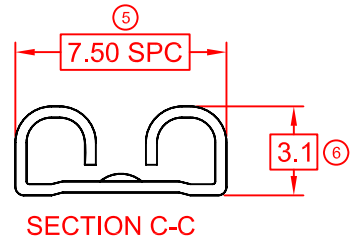
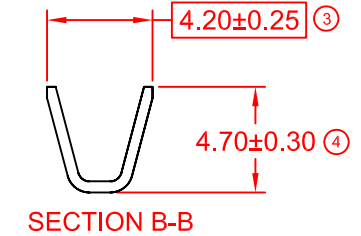
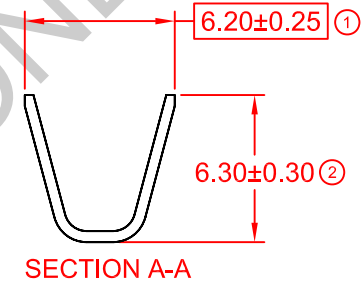
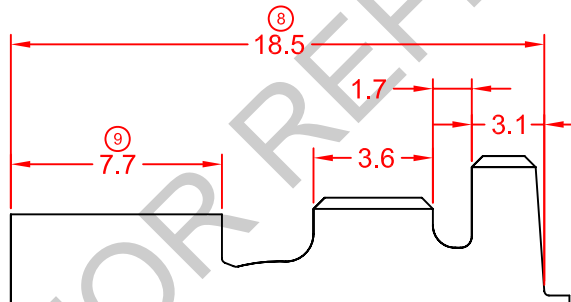
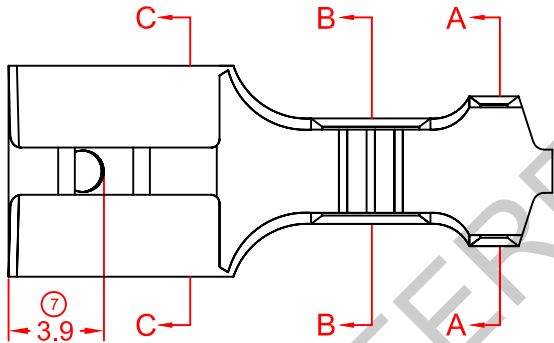
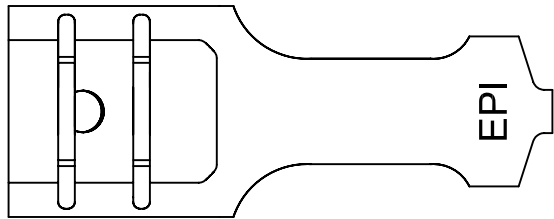
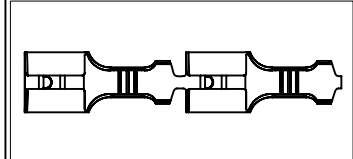


# SPECIFICATION DRAWING

MASTER COPY

ITEM NO	MATERIAL	TREATMENT	QTY/REEL	REEL/CARTON	MATCHING PART(S)
17250H-1	t0.4 BRASS (C2680)	NONE	4000 PCS	4	TERMINAL-TAB t0.8 X W6.3
17250H-2	t0.4 BRASS (C2680)	TIN PLATING	4000 PCS	4	HOUSING-N/A
17250H-2T	t0.4 BRASS (C2680)	PRE-TIN PLATED	4000 PCS	4	

SYMBOL	DESCRIPTION
○	DIMENSION INSPECTED DURING SETUP AND OUTGOING.
□	DIMENSION INSPECTED HOURLY.
SPC	STATISTICALLY CONTROLLED DIMENSION.
△	JIG USED DURING INSPECTION.



**REMARKS:**

- a) PLATING THICKNESS MIN 40μ INCH
- b) SUGGESTED WIRE INSULATION (O.D): 3.7MM
- c) SUGGESTED WIRE RANGE: 2.70~1.38MM<sup>2</sup> (AWG12~16)
- d) INSERT FORCE: MAX 4.00KG
- e) TENSILE FORCE: MIN 3.50KG

				REVISION: 04	GENERAL TOLERANCE UNLESS SPECIFIED: X.XXX ±0.05 X.XX ±0.10 X.X ±0.20 X ±0.50	PREPARE BY: KS YEW	Elamp Precision Industry(M) Sdn.Bhd.				
						REVIEWED BY: CH ANG		ITEM NAME: 250 SERIES FEMALE TERMINAL			
						APPROVED BY: CY CHUANG	ITEM NO: 17250H-1, 2, 2T				
04	10/2/12	UPDATE TO NEW FORMAT	-	SHEET OF: 1 / 1	EFFECTIVE DATE: 10/2/12	SCALE : FREE UNIT : MM	DRAWING NO: EP-Q-338A				
REV.	DATE	AMENDMENT	ECR NO:								