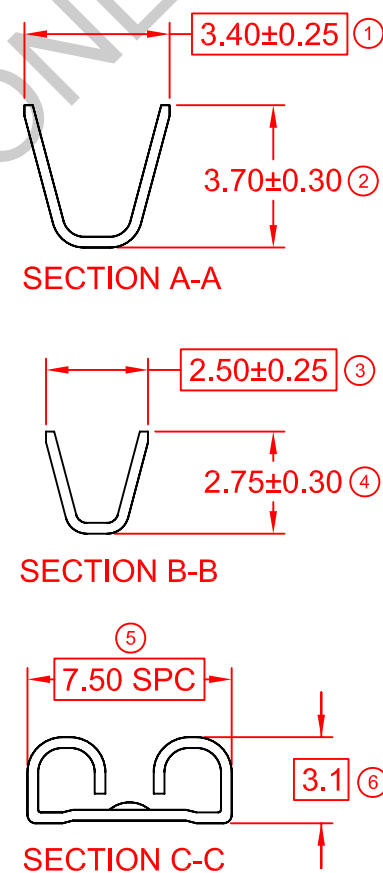
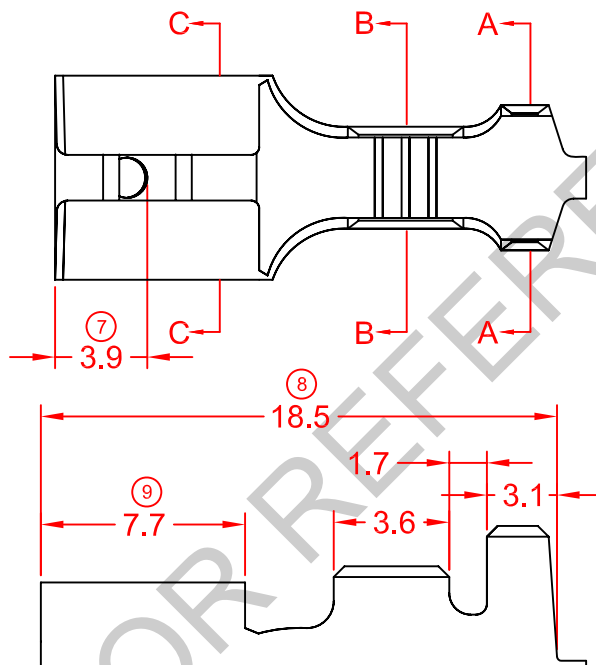
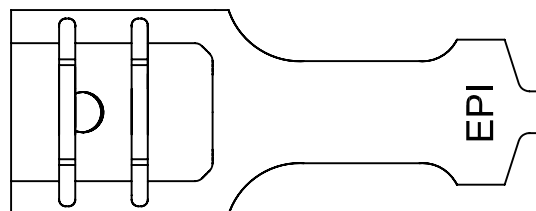
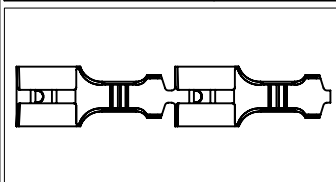


SPECIFICATION DRAWING

MASTER COPY

ITEM NO	MATERIAL	TREATMENT	QTY/REEL	REEL/CARTON	MATCHING PART(S)
17250S-1	t0.4 BRASS (C2680)	NONE	5000 PCS	4	TERMINAL-TAB t0.8 X W6.3
17250S-2	t0.4 BRASS (C2680)	TIN PLATING	5000 PCS	4	HOUSING-N/A
17250S-2T	t0.4 BRASS (C2680)	PRE-TIN PLATED	5000 PCS	4	

SYMBOL	DESCRIPTION
○	DIMENSION INSPECTED DURING SETUP AND OUTGOING.
□	DIMENSION INSPECTED HOURLY.
SPC	STATISTICALLY CONTROLLED DIMENSION.
△	JIG USED DURING INSPECTION.



REMARKS:

- a) PLATING THICKNESS MIN 40μ INCH
- b) SUGGESTED WIRE INSULATION (O.D): 2.0MM
- c) SUGGESTED WIRE RANGE: 0.78-0.40MM² (AWG18-20)
- d) INSERT FORCE: MAX 4.00KG
- e) TENSILE FORCE: MIN 3.50KG

				REVISION: 04	GENERAL TOLERANCE UNLESS SPECIFIED: X.XXX ±0.05 X.XX ±0.10 X.X ±0.20 X ±0.50	PREPARE BY: KS YEW REVIEWED BY: CH ANG APPROVED BY: CY CHUANG	Elamp Precision Industry(M) Sdn.Bhd.
				SHEET OF: 1 / 1			
04	10/2/12	UPDATE TO NEW FORMAT	-	ECR NO:			
REV.	DATE	AMENDMENT					