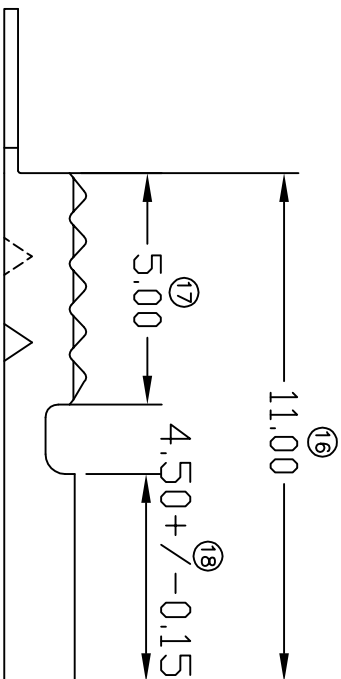
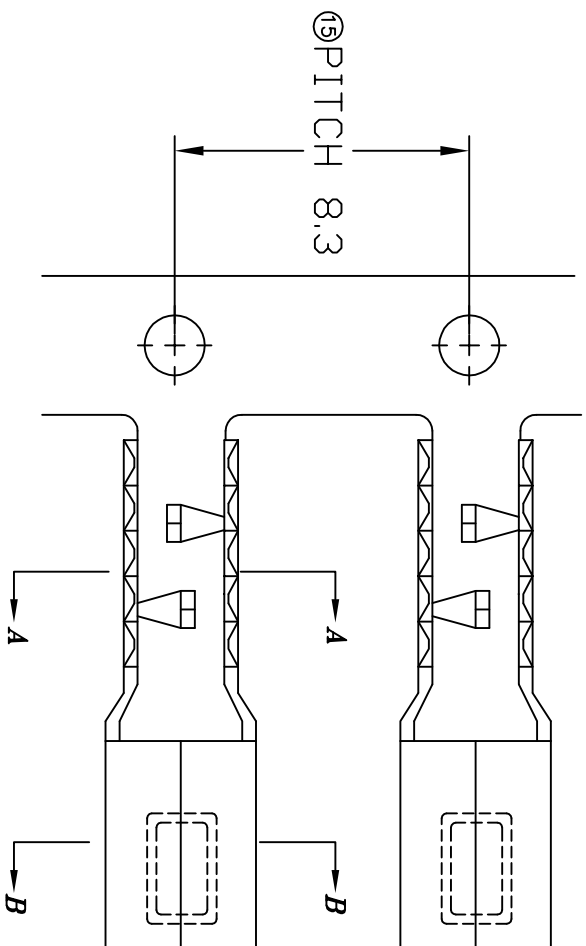


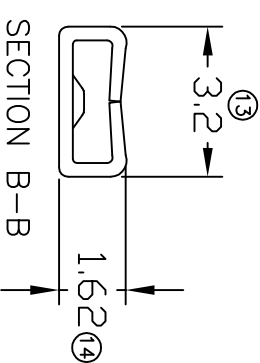
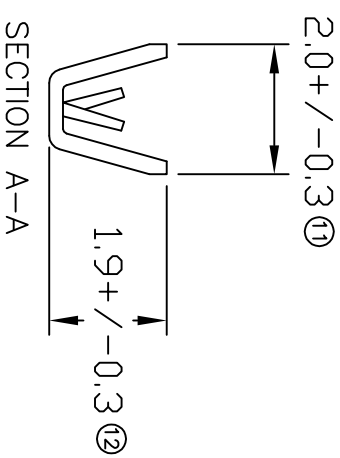
TERMINALS SPECIFICATION DRAWING



FOR REFERENCE ONLY

- 10) CRIMPING WIRE TENSILE FORCE IS BASE ON COPPER BREAK OFF INTENSITY.
- 9) TEMPERATURE RANGE -40°C TO +120°C.
- 8) VOLTAGE-MAX [VOLTS] PER WIRE SPECIFICATION.
- 7) MATCHING WITH TAB t0.8 X W2.5.
- 6) TENSILE FORCE : MIN 2.60KG.
- 5) INSERT FORCE : MAX 1.60KG.
- 4) THICKNESS PLATING MORE THAN 40μ INCH.
- 3) PACKING QTY : 10000 PCS/REEL.
- 2) WIRE INSULATION (O.D) : 0.95MM.
- 1) APPLICABLE WIRE RANGE : #AWG 26/1061(PIERCING TYPE).

SPECIFICATION :



MATERIAL: t0.30 BRASS C2680		TIN PLATING	173110AK0.8)-2
DIMENSIONS : MM		TREATMENT SELECTIVE	173110AK0.8)-1
TOLERANCE UNLESS OTHERWISE SPECIFIED:		PART NAME:	173110AK0.8)-1
X.XXX +/-0.05		Elamp Precision Industry(M) Sdn.Bhd.	
X.XX +/-0.10		Terminals & Connectors	
X.X +/-0.20		Part Name:	
X +/-0.50		TAB-ON TYPE FOR SIGNAL COMMUNICATION	
EFFECTIVE DATE : 26/10/07		APPLICABLE (1) TERMINALS (2) HOUSING	
		(1) TAB t0.8 X W2.5	
		(2) -	

REVISION: 04	
SHEET OF : 1 / 1	