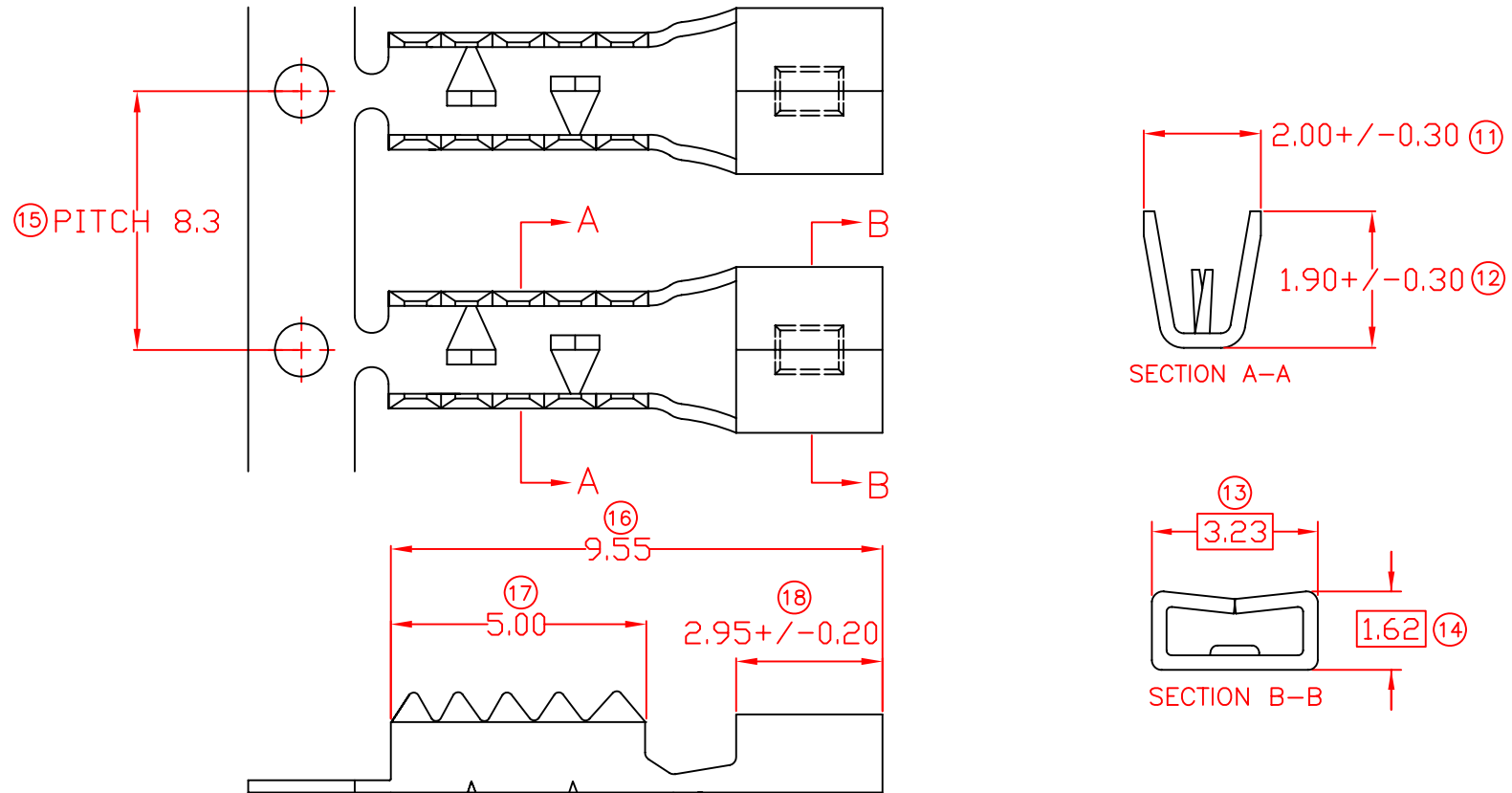


TERMINALS SPECIFICATION DRAWING



□ MATCHING DIMENSION

- 10) CRIMPING WIRE TENSILE FORCE IS BASE ON COPPER BREAK OFF INTENSITY.
- 9) TEMPERATURE RANGE -40°C TO +120°C.
- 8) VOLTAGE-MAX [VOLTS] PER WIRE SPECIFICATION.
- 7) MATCHING WITH TAB t0.8 X W2.5.
- 6) TENSILE FORCE : MIN 1.00KG.
- 5) INSERT FORCE : MAX 2.00KG.
- 4) THICKNESS PLATING MORE THAN 40μ INCH.
- 3) PACKING QTY : 12000 PCS/REEL.
- 2) WIRE INSULATION (O.D) : 0.95MM.
- 1) APPLICABLE WIRE RANGE : #AWG 26/1061(PIERCE TYPE).

FOR REFERENCE ONLY

SPECIFICATION :

REV.	DATE	AMENDMENT
08	15/7/11	(13) 3.20 CHANGE TO 3.23
07	5/6/09	5)INSERT FORCE: MAX 1.00KG CHANGE TO MAX 2.00KG, 6)TENSILE FORCE: MIN 2.00KG CHANGE TO 1.00KG. (18) 2.90±0.15 CHANGE TO 2.95±0.20

REVISION: 08
SHEET OF : 1 / 1

MATERIAL: t0.30 BRASS C2680	TIN PLATING	173110B-2
	NONE	173110B-1
DIMENSIONS : MM	TREATMENT SELECTIVE	PART NUMBER
TOLERANCE UNLESS OTHERWISE SPECIFIED:	PREPARE BY: KS YEW REVIEWED BY: CH ANG APPROVED BY: CY CHUANG SCALE : FREE DRAWING NO: A1293	
X.XXX +/-0.05 X.XX +/-0.10 X.X +/-0.20 X +/-0.50	EPI Terminals & Connectors Elamp Precision Industry(M) Sdn.Bhd. PART NAME: TAB-ON TYPE FOR SIGNAL COMMUNICATION APPLICABLE (1) TERMINALS (2) HOUSING (1) TAB t0.8 X W2.5 (2) -	
EFFECTIVE DATE : 15/7/11		