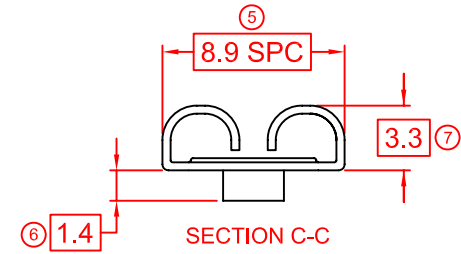
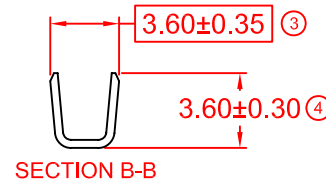
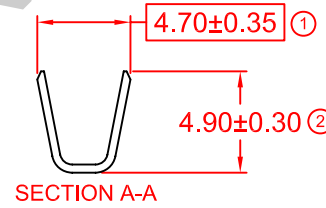
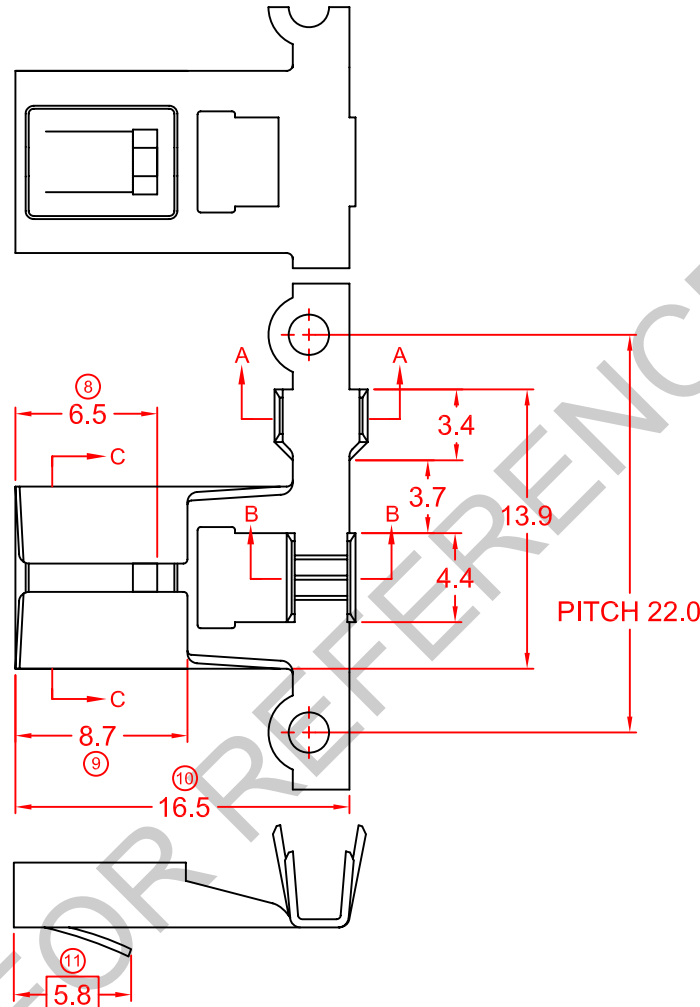
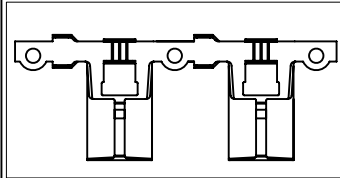


SPECIFICATION DRAWING

MASTER COPY

ITEM NO	MATERIAL	TREATMENT	QTY/REEL	REEL/CARTON	MATCHING PART(S)
17312F-1	t0.4 BRASS (C2680)	NONE	2500 PCS	4	TERMINAL-TAB t0.8 X W7.7
17312F-2	t0.4 BRASS (C2680)	TIN PLATING	2500 PCS	4	HOUSING-SL-3P

SYMBOL	DESCRIPTION
⊙	DIMENSION INSPECTED DURING SETUP AND OUTGOING.
□	DIMENSION INSPECTED HOURLY.
SPC	STATISTICALLY CONTROLLED DIMENSION.
△	JIG USED DURING INSPECTION.



REMARKS:

- a) PLATING THICKNESS MIN 40μ INCH
- b) SUGGESTED WIRE INSULATION (O.D): 2.9MM
- c) SUGGESTED WIRE RANGE: 1.76~0.90MM² (AWG14~18)
- d) INSERT FORCE: MAX 1.70KG
- e) TENSILE FORCE: MIN 1.00KG

			REVISION: 04		GENERAL TOLERANCE UNLESS SPECIFIED: X.XXX ±0.05 X.XX ±0.10 X.X ±0.20 X ±0.50	PREPARE BY: KS YEW		Elamp Precision Industry(M) Sdn.Bhd.
			SHEET OF: 1 / 1			REVIEWED BY: CH ANG		
			EFFECTIVE DATE: 21/11/11		APPROVED BY: CY CHUANG		ITEM NO: 17312F-1, 2	
04	21/11/11	UPDATE TO NEW FORMAT	SHEET OF: 1 / 1		SCALE : FREE		DRAWING NO: EP-Q-103A	
REV.	DATE	AMENDMENT	ECR NO:		UNIT : MM			