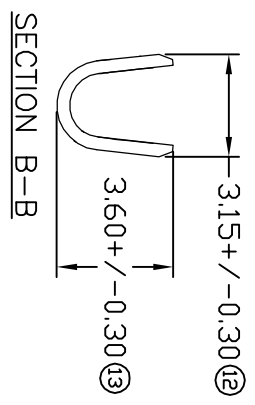
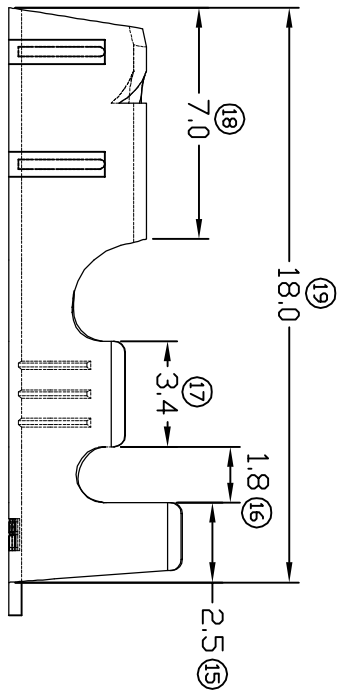
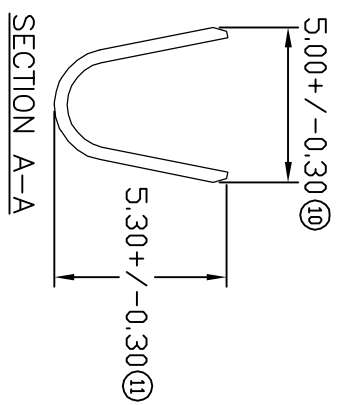
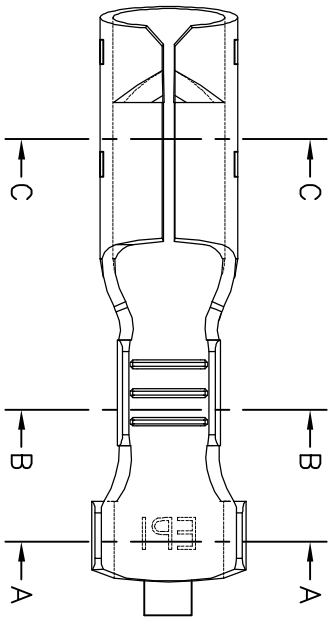
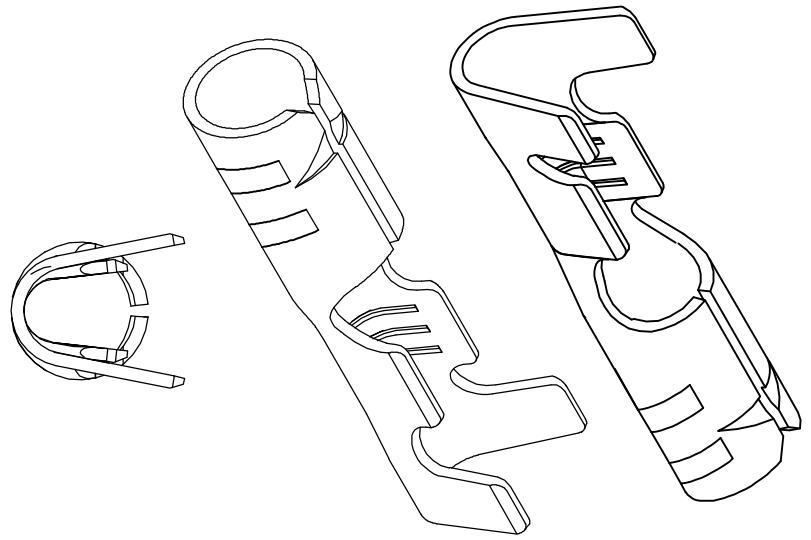


TERMINALS SPECIFICATION DRAWING



- 9) CRIMPING WIRE TENSILE FORCE IS BASE ON COPPER BREAK OFF INTENSITY.
- 8) TEMPERATURE RANGE -40°C TO +120°C.
- 7) VOLTAGE-MAX [VOLTS] PER WIRE SPECIFICATION.
- 6) TENSILE FORCE : MIN 2.00KG.
- 5) INSERT FORCE : MAX 4.00KG.
- 4) THICKNESS PLATING MORE THAN 40μ INCH.
- 3) PACKING QTY : 8000 PCS/REEL.
- 2) WIRE INSULATION (O.D) : 3.0MM.
- 1) APPLICABLE WIRE RANGE : 1.14-0.51MM².

SPECIFICATION :

FOR REFERENCE ONLY

REV.	DATE	CHANGE DIM FR (18) 8.00 TO 7.0	AMENDMENT
01	11/11/08		
SHEET OF : 1 / 1			

MATERIAL: t0.35 BRASS C2680	DIMENSIONS : MM TOLERANCE UNLESS OTHERWISE SPECIFIED: X.XXX +/-0.05 X.XX +/-0.10 X.X +/-0.20 X +/-0.50	TREATMENT SELECTIVE TIN PLATING NONE	PART NUMBER 18051A-2 18051A-1
DWN: KS YEW CHK: CHUANG APVD: CHUANG SCALE : FREE DRAWING NO: A1522		EPI Terminals & Connectors Elamp Precision Industry(M) Sdn.Bhd.	
EFFECTIVE DATE : 11/11/08		PART NAME: BULLET TERMINALS APPLICABLE (1) TERMINALS (2) HOUSING	