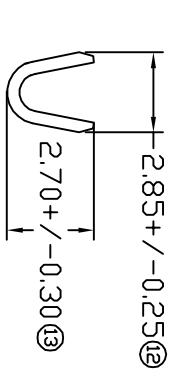
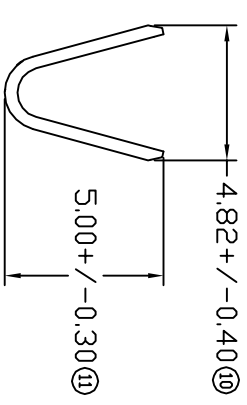
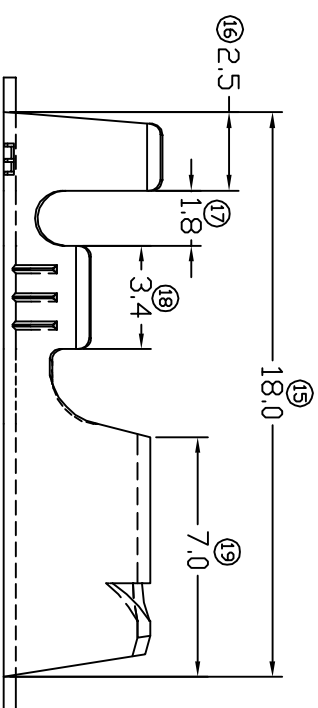
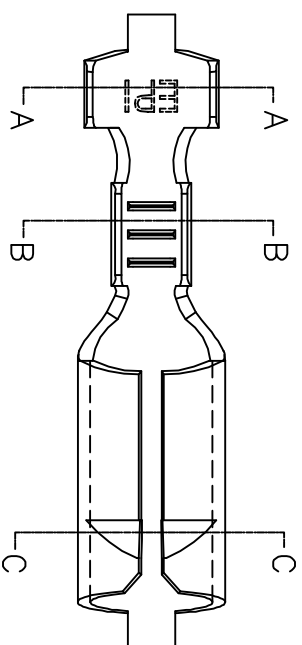
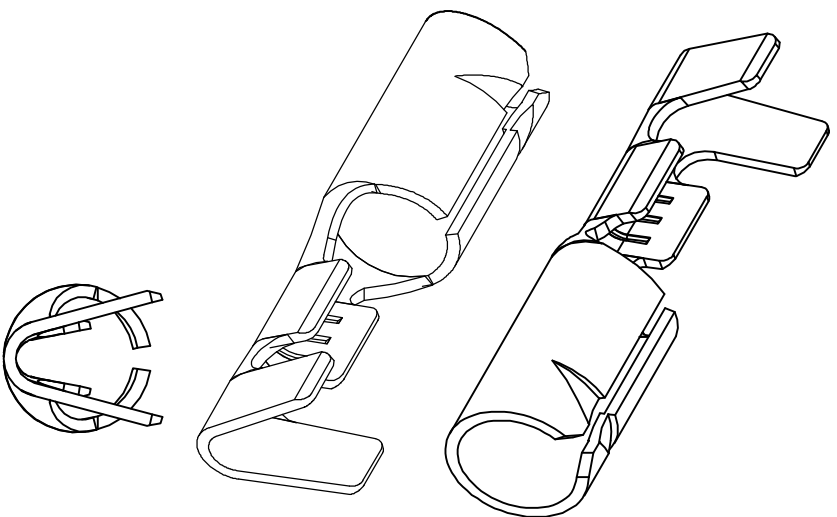


# TERMINALS SPECIFICATION DRAWING

UNCONTROLLED COPY



- 9) CRIMPING WIRE TENSILE FORCE IS BASE ON COPPER BREAK OFF INTENSITY.
- 8) TEMPERATURE RANGE -40°C TO +120°C.
- 7) VOLTAGE-MAX [VOLTS] PER WIRE SPECIFICATION.
- 6) TENSILE FORCE : MIN 2.0KG.
- 5) INSERT FORCE : MAX 4.0KG.
- 4) THICKNESS PLATING MORE THAN 40µ INCH.
- 3) PACKING QTY : 8000 PCS/REEL.
- 2) WIRE INSULATION (O.D.) : 2.8MM.
- 1) APPLICABLE WIRE RANGE : 0.86~0.44MM².

SPECIFICATION :

FOR REFERENCE ONLY

01	13/11/08	CHANGE DIM FR (17) 1.75 TO 1.8, FR (18) 3.30 TO 3.4, FR (19) 8.00 TO 7.0, FR (20) 2.84±0.20 TO 2.85±0.25
00	22/05/08	NEW RELEASE
REV.	DATE	AMENDMENT

REVISION:	01
SHEET OF :	1 / 1

MATERIAL:	10.40 BRASS	TIN PLATING	18051S-2
	C2680	NONE	18051S-1
DIMENSIONS : MM		TREATMENT SELECTIVE	PART NUMBER
TOLERANCE UNLESS OTHERWISE SPECIFIED:		DWN: KS YEW	
		CHK: CHUANG	
		APVD: YL	
		SCALE : FREE	
		DRAWING NO:	
		A1483	
EFFECTIVE DATE :	13/11/08		
		<b>EPI</b> Terminals & Connectors Elamp Precision Industry(M) Sdn.Bhd.	
		PART NAME:	
		Ø5.00MM BULLET TERMINALS	
		APPLICABLE (1) TERMINALS (2) HOUSING	
		(1) 28051	
		(2) -	