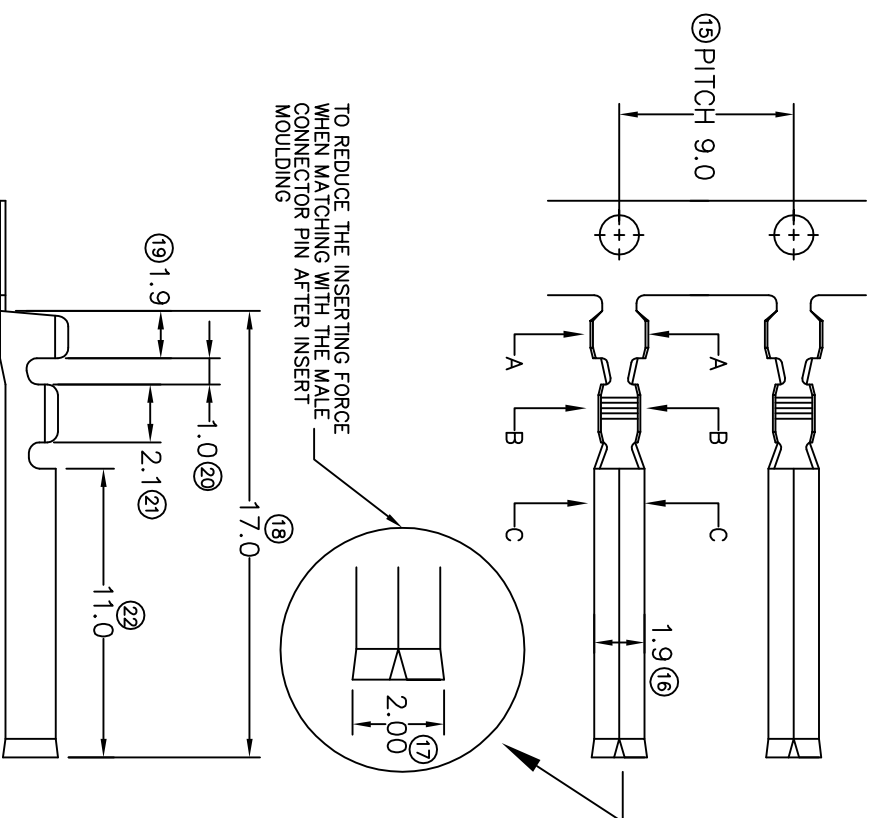


# TERMINALS SPECIFICATION DRAWING



**FOR REFERENCE ONLY**

- 9) CRIMPING WIRE TENSILE FORCE IS BASE ON COPPER BREAK OFF INTENSITY.
- 8) TEMPERATURE RANGE -40°C TO +120°C.
- 7) VOLTAGE-MAX [VOLTS] PER WIRE SPECIFICATION.
- 6) TENSILE FORCE : MIN 1.7KG.
- 5) INSERT FORCE : MAX 2.0KG.
- 4) THICKNESS PLATING MORE THAN 40μ INCH.
- 3) PACKING QTY : 10000 PCS/REEL.
- 2) WIRE INSULATION (O.D) : 1.1MM.
- 1) APPLICABLE WIRE RANGE : 0.15-0.07MM<sup>2</sup>.

SPECIFICATION :

<b>MATERIAL:</b> ±0.20 BRASS C2680	<b>PRE-TIN PLATED</b>	<b>18157-2T</b>
<b>DIMENSIONS : MM</b>	<b>NONE</b>	<b>18157-1</b>
<b>TOLERANCE UNLESS OTHERWISE SPECIFIED:</b>	<b>TREATMENT SELECTIVE</b>	<b>PART NUMBER</b>
X.XXX +/ -0.05	<b>DWN: KS YE'W</b>	<b>Terminals &amp; Connectors</b>
X.XX +/ -0.10	<b>CHK: SC CHOO</b>	<b>Elamp Precision Industry(M) Sdn.Bhd.</b>
X.X +/ -0.20	<b>APVD: CHUANG</b>	<b>PART NAME:</b>
X +/ -0.50	<b>SCALE : FREE</b>	<b>DIA-1.57MM ROUND PIN &amp; REC</b>
<b>EFFECTIVE DATE : 23/8/07</b>	<b>DRAWING NO: A1336</b>	<b>APPLICABLE (1) TERMINALS (2) HOUSING</b>
<b>REVISION:</b> 05	<b>SHEET OF :</b> 1 / 1	<b>(1) PIN Ø1.61</b>
		<b>(2) -</b>