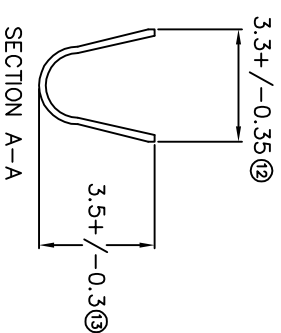
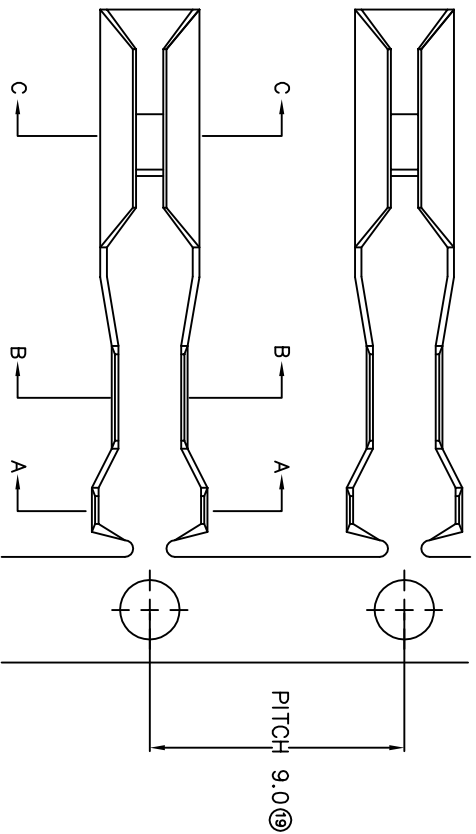
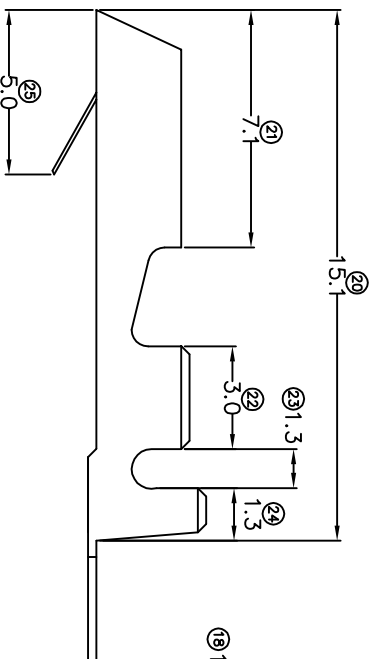
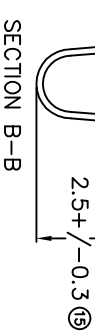
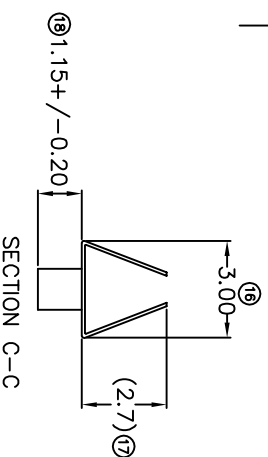


# TERMINALS SPECIFICATION DRAWING



2.35+/-0.3 (14)



FOR REFERENCE ONLY

- 11) CRIMPING WIRE TENSILE FORCE IS BASE ON COPPER BREAK OFF INTENSITY.
- 10) TEMPERATURE RANGE -40°C TO +120°C.
- 9) VOLTAGE-MAX [VOLTS] PER WIRE SPECIFICATION.
- 8)  $\varnothing$  FOR REFERENCE ONLY.
- 7) MATCHING WITH TAB  $\varnothing$ 2.24 ROUND PIN..
- 6) TENSILE FORCE : MIN 1.10KG(WITH  $\varnothing$ 2.24 ELAMP PIN).
- 5) INSERT FORCE : MAX 2.00KG(WITH  $\varnothing$ 2.24 ELAMP PIN).
- 4) THICKNESS PLATING MORE THAN 40 $\mu$  INCH.
- 3) PACKING QTY : 5000 PCS/REEL.
- 2) WIRE INSULATION (O.D) : 2.0MM.
- 1) APPLICABLE WIRE RANGE : 0.53-0.23MM<sup>2</sup>.

SPECIFICATION :

REVISION: 03	SHEET OF : 1 / 1	EFFECTIVE DATE : 24/7/07	A1364	(2) -	
TOLERANCE UNLESS OTHERWISE SPECIFIED: X.XXX +/-0.05 X.XX +/-0.10 X.X +/-0.20 X +/-0.50	DWN: KS YEW	CHK: SC CHOO	APVD: CHUANG	SCALE : FREE	DRAWING NO:
DIMENSIONS : MM	MATERIAL: t0.25 BRASS C2680	TREATMENT SELECTIVE	PRE-TIN PLATED	TIN PLATING	NONE
OTHERWISE SPECIFIED:	PART NAME: Epi Terminals & Connectors Elamp Precision Industry(M) Sdn.Bhd.	PART NUMBER	18236B-2T	18236B-2	18236B-1
RECEPACLE TERMINALS	APPLICABLE (1) TERMINALS (2) HOUSING	PART NUMBER	18236B-2T	18236B-2	18236B-1