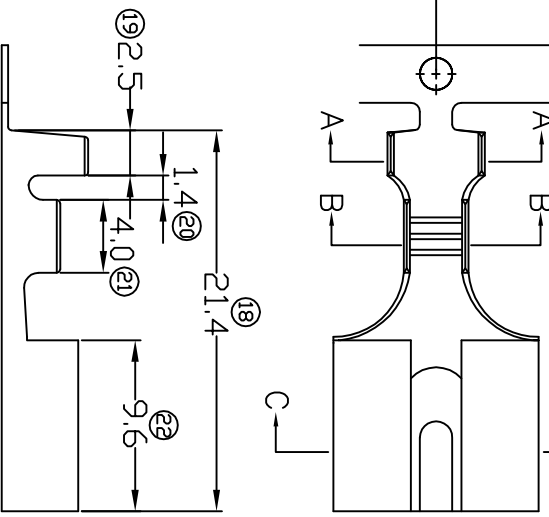
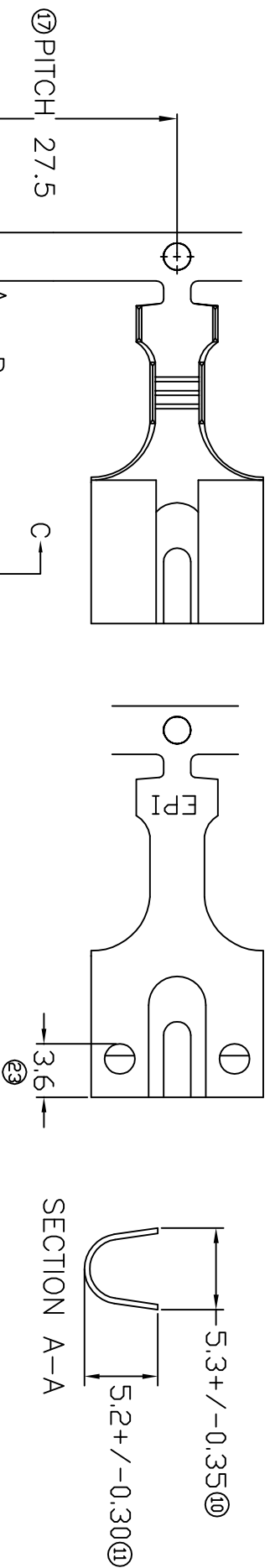
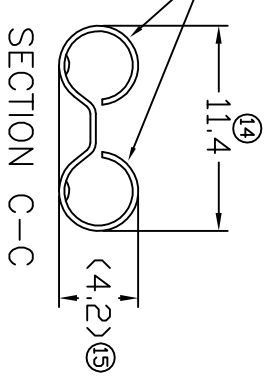


TERMINALS SPECIFICATION DRAWING



⑮ MATCHING WITH
 Ø3.96 BULLET TERMINAL



FOR REFERENCE ONLY

- 9) CRIMPING WIRE TENSILE FORCE IS BASE ON COPPER BREAK OFF INTENSITY.
- 8) TEMPERATURE RANGE -40°C TO +120°C.
- 7) VOLTAGE-MAX [VOLTS] PER WIRE SPECIFICATION.
- 6) ⑮ FOR REFERENCE ONLY.
- 5) TENSILE FORCE : MIN 2.50KG.
- 4) INSERT FORCE : MAX 1.60KG.
- 3) PACKING QTY : 1500 PCS/REEL.
- 2) WIRE INSULATION (O.D) : 3.1MM.
- 1) APPLICABLE WIRE RANGE : 1.17-0.52MM².

SPECIFICATION :

MATERIAL: TO.30 BRASS C2680		NONE 18251-1	
DIMENSIONS : MM TOLERANCE UNLESS OTHERWISE SPECIFIED: X.XXX +/-0.05 X.XX +/-0.10 X.X +/-0.20 X +/-0.50		TREATMENT SELECTIVE PART NUMBER	
DWN: KS YEW CHK: HY LIM APVD: CHUANG SCALE : FREE DRAWING NO:		PART NAME: 5.0MM DIA. BULLET TERMINALS APPLICABLE (1) TERMINALS (2) HOUSING	
EFFECTIVE DATE : 28/11/07		A1463 (2) -	
REVISION: 02		SHEET OF : 1 / 1	