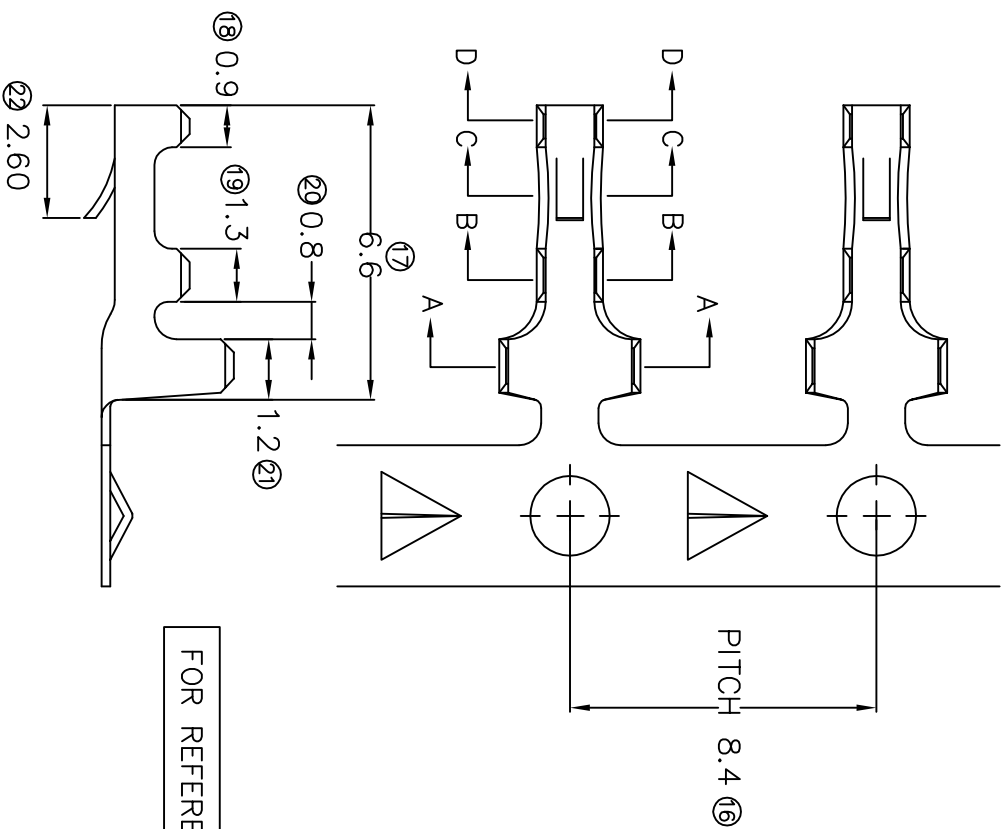
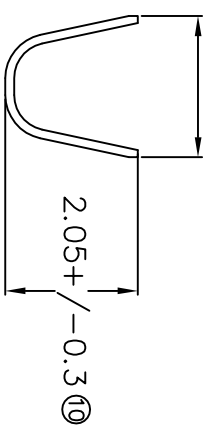


TERMINALS SPECIFICATION DRAWING



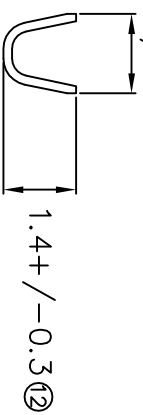
FOR REFERENCE ONLY

2.1+/-0.3 (9)



SECTION A-A

1.3+/-0.25 (11)

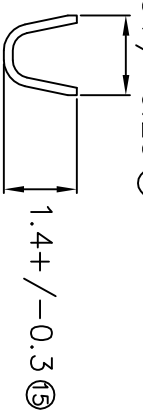


SECTION B-B



SECTION C-C

1.3+/-0.25 (14)



SECTION D-D

- 8) CRIMPING WIRE TENSILE FORCE IS BASE ON COPPER BREAK OFF INTENSITY.
- 7) TEMPERATURE RANGE -40°C TD +120°C.
- 6) VOL TAGE-MAX [VOLT(S)] PER WIRE SPECIFICATION.
- 5) FOR PC BOARD HOLE Ø1.20.
- 4) THICKNESS PLATING MORE THAN 40µ INCH.
- 3) PACKING QTY : 10000 PCS/REEL.
- 2) WIRE INSULATION (O.D) : 1.2MM.
- 1) APPLICABLE WIRE RANGE : 0.15-0.07MM².

SPECIFICATION :

REVISION:	03	TOLERANCE UNLESS OTHERWISE SPECIFIED:	X:XXX +/-0.05	X:XX +/-0.10	X:X +/-0.20	X +/-0.50
SHEET OF :	1 / 1	EFFECTIVE DATE :	13/7/07			
MATERIAL:		PRE-TIN PLATED		22012-2T		
40.20 BRASS		SOLDER TIN		22012-2		
C2680		TREATMENT SELECTIVE		PART NUMBER		
DIMENSIONS : MM		DWN: KS YEW		PART NAME:		
TOLERANCE UNLESS OTHERWISE SPECIFIED:		CHK: SC CHOO		Epi Terminals & Connectors		
APVD: CHUANG		Elamp Precision Industry(M) Sdn.Bhd.				
SCALE : FREE		DRAWING NO: A1351		BOARD-IN CRIMP STYLE TERMINALS		
				APPLICABLE (1) TERMINALS (2) HOUSING		
				(1) _____		
				(2) _____		