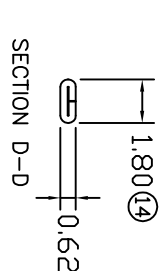
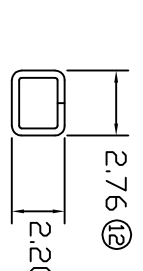
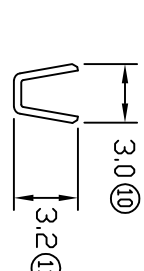
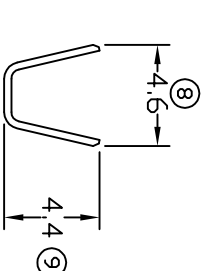
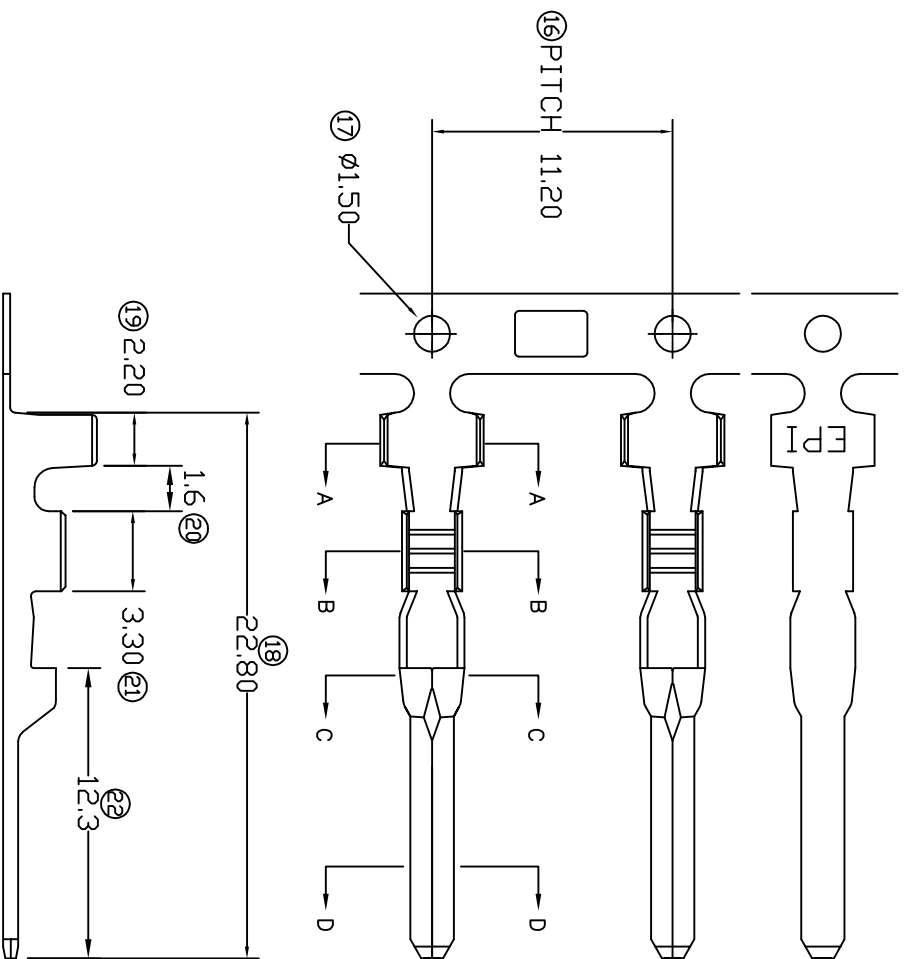


TERMINALS SPECIFICATION DRAWING



FOR REFERENCE ONLY

- 7) CRIMPING WIRE TENSILE FORCE IS BASE ON COPPER BREAK OFF INTENSITY.
- 6) TEMPERATURE RANGE -40°C TO +120°C.
- 5) VOLTAGE-MAX [VOLTS] PER WIRE SPECIFICATION.
- 4) THICKNESS PLATING MORE THAN 40µ INCH.
- 3) PACKING QTY : 3500 PCS/REEL.
- 2) WIRE INSULATION (O.D) : 2.6MM.
- 1) APPLICABLE WIRE RANGE : 0.90-0.40MM².

SPECIFICATION :

MATERIAL: 10.30 BRASS C2680		PRE-TIN PLATED 270702H-2T	
TREATMENT SELECTIVE		PART NUMBER	
DIMENSIONS : MM		DWN: KS YEW	
TOLERANCE UNLESS OTHERWISE SPECIFIED:		CHK: SC CHOO	
X.XXX	+/-0.05	Y.L	
X.XX	+/-0.10	APVD: CHUANG	
X.X	+/-0.20	SCALE : FREE	
X	+/-0.50	DRAWING NO:	
EFFECTIVE DATE : 27/11/07		A1431-1	
REVISION: 02		PART NAME: 070 SERIES TAB	
SHEET OF : 1 / 1		APPLICABLE (1) TERMINALS (2) HOUSING (1) 170702 (2) 070 SERIES HOUSING	

EPI Terminals & Connectors
Elamp Precision Industry(M) Sdn.Bhd.