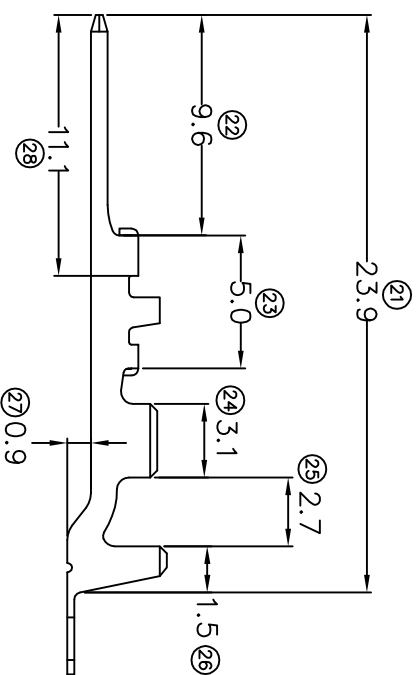
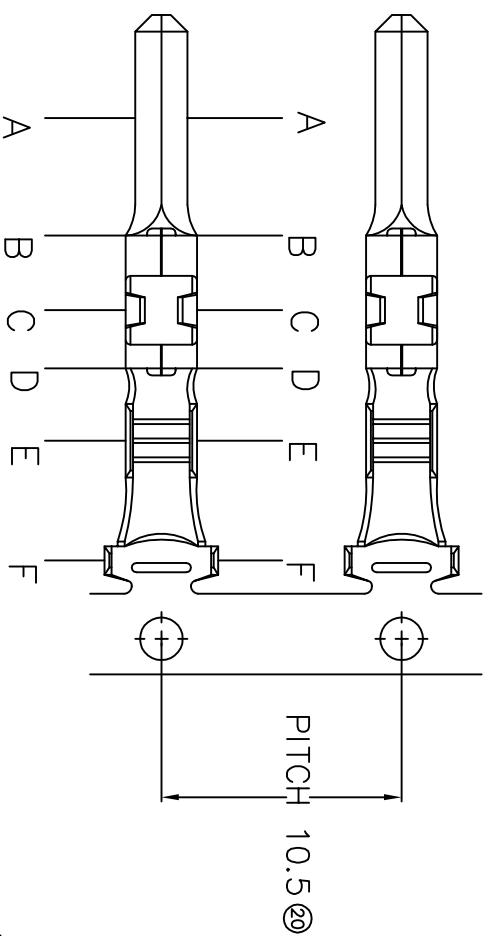


# TERMINALS SPECIFICATION DRAWING

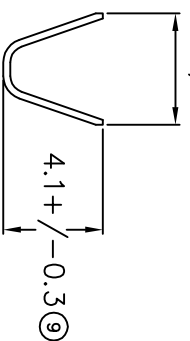


FOR REFERENCE ONLY

- 7) CRIMPING WIRE TENSILE FORCE IS BASE ON COPPER BREAK OFF INTENSITY.
- 6) TEMPERATURE RANGE -40°C TD +120°C.
- 5) VOLTAGE-MAX [VOLTAGE] PER WIRE SPECIFICATION.
- 4) THICKNESS PLATING MORE THAN 40μ INCH.
- 3) PACKING QTY : 5000 PCS/REEL.
- 2) WIRE INSULATION (O.D) : 2.5MM.
- 1) APPLICABLE WIRE RANGE : 0.71-0.32MM<sup>2</sup>.

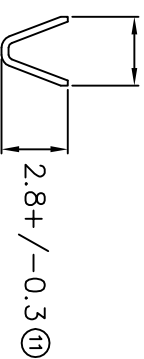
PITCH 10.5 (20)

4.95+/-0.3 (8)



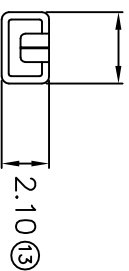
SECTION F-F

3.0+/-0.35 (10)



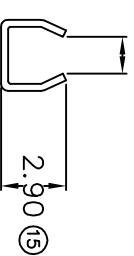
SECTION E-E

2.94 (12)



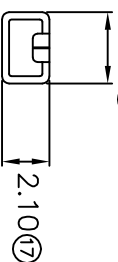
SECTION D-D

1.55 (14)



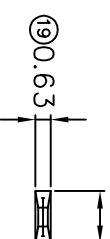
SECTION C-C

2.94 (16)



SECTION B-B

2.20 (18)



SECTION A-A

MATERIAL:

to.30 BRASS

C2680

PRE-TIN PLATED

27091MA-2T

TREATMENT SELECTIVE

PART NUMBER

DWN: KS YEW

**EPI** Terminals & Connectors  
Elamp Precision Industry(M) Sdn.Bhd.

DIMENSIONS : MM  
TOLERANCE UNLESS OTHERWISE SPECIFIED:

CHK: SC CHOO

PART NAME:  
090 SERIES TAB

APVD: CHUANG

APPLICABLE (1) TERMINALS (2) HOUSING

SCALE : FREE  
DRAWING NO:

(1) 170901  
(2) -

REVISION: 03

SHEET OF: 1 / 1

EFFECTIVE DATE: 13/7/07

A1310

(2) -

SPECIFICATION :