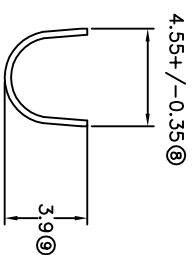
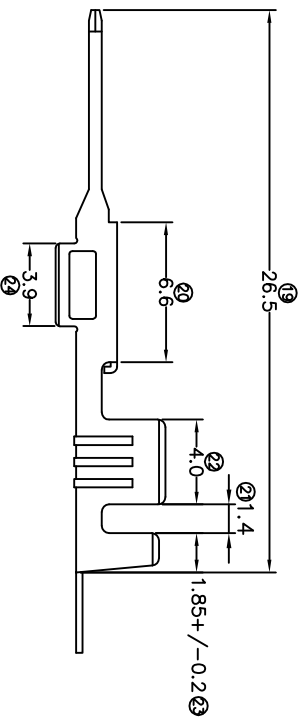
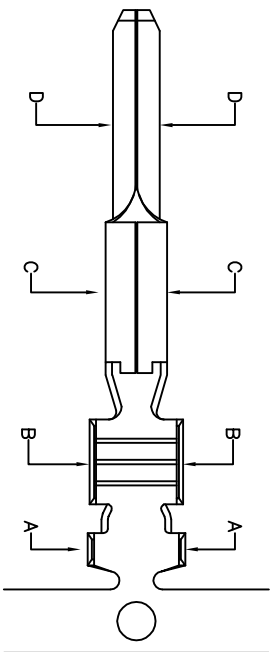
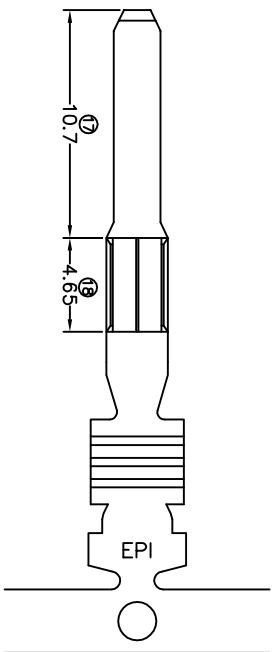
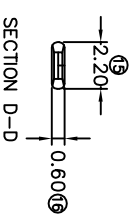
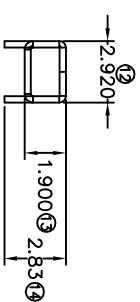
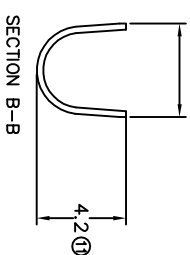


TERMINALS SPECIFICATION DRAWING



4.4+/-0.35 (10)



FOR REFERENCE ONLY

- 7) CRIMPING WIRE TENSILE FORCE IS BASE ON COPPER BREAK OFF INTENSITY.
- 6) TEMPERATURE RANGE -40°C TD +120°C.
- 5) VOLTAGE-MAX [VOLT] PER WIRE SPECIFICATION.
- 4) THICKNESS PLATING MORE THAN 40μ INCH.
- 3) PACKING QTY : 4000 PCS/REEL.
- 2) WIRE INSULATION (O.D) : 2.4MM.
- 1) APPLICABLE WIRE RANGE : 1.57-0.70MM².

SPECIFICATION :

MATERIAL: t0.30 BRASS C2680		PRE-TIN PLATED 27096H-2T	
DIMENSIONS : MM		TREATMENT SELECTIVE	
TOLERANCE UNLESS OTHERWISE SPECIFIED: X.XXX +/-0.05 X.XX +/-0.10 X.X +/-0.20 X +/-0.50		DWN: KS YEW CHK: SC CHOO APVD: CHUANG YL SCALE : FREE DRAWING NO:	
EFFECTIVE DATE : 23/7/07		A1411	
SHEET OF : 1 / 1		PART NAME: 090 SERIES TAB APPLICABLE (1) TERMINALS (2) HOUSING	
REVISION: 03		EPI Terminals & Connectors Elamp Precision Industry(M) Sdn.Bhd.	
1) APPLICABLE WIRE RANGE : 1.57-0.70MM ² .		(1) 17096M-2T (2) 090 SERIES HOUSING	