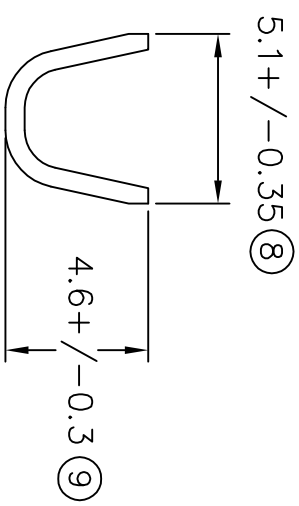
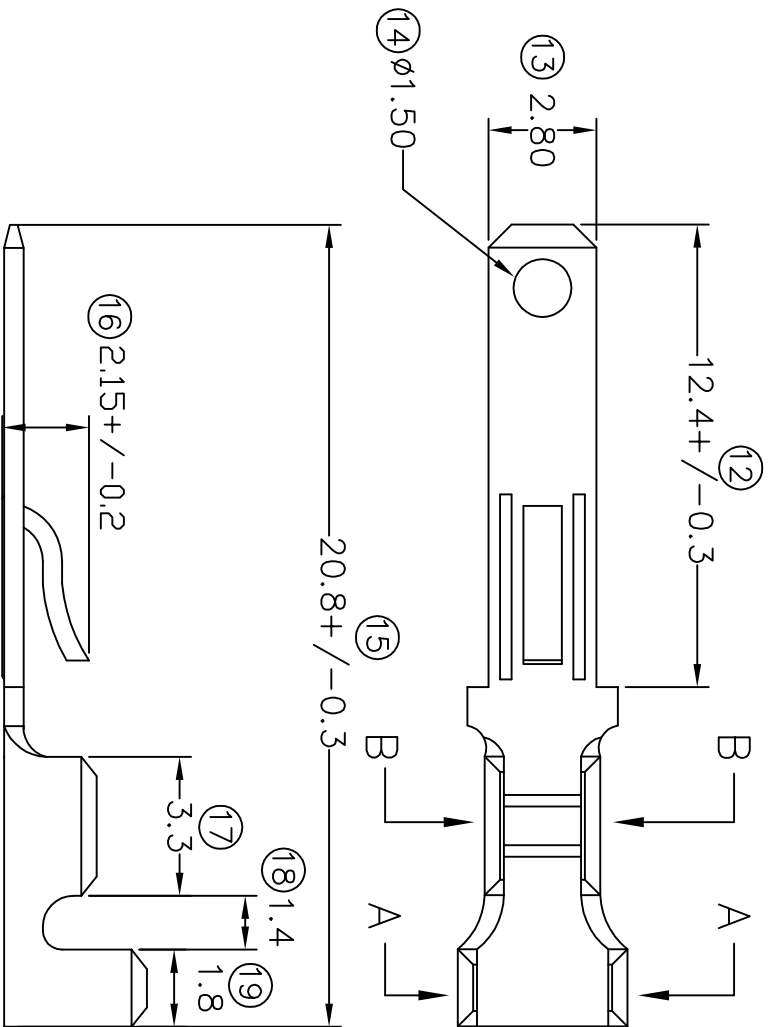
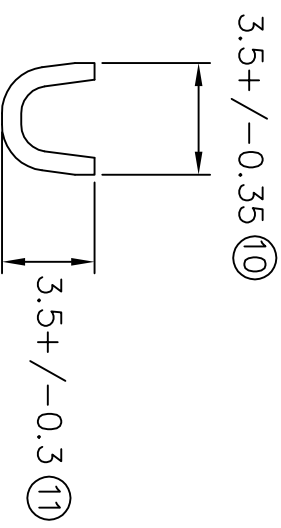


TERMINALS SPECIFICATION DRAWING



SECTION A-A



SECTION B-B

FOR REFERENCE ONLY

- 7) CRIMPING WIRE TENSILE FORCE IS BASE ON COPPER BREAK OFF INTENSITY.
- 6) TEMPERATURE RANGE -40°C TO +120°C.
- 5) VOLTAGE-MAX [VOLTS] PER WIRE SPECIFICATION.
- 4) THICKNESS PLATING MORE THAN 40 μ INCH.
- 3) PACKING QTY : 9000 PCS/REEL.
- 2) WIRE INSULATION (O.D) : 2.8MM.
- 1) APPLICABLE WIRE RANGE : 1.48-0.76MM².

SPECIFICATION :

MATERIAL: t0.5 BRASS C2680	TIN PLATING	27110H-2
DIMENSIONS : MM	TREATMENT SELECTIVE	PART NUMBER
TOLERANCE UNLESS OTHERWISE SPECIFIED:	DWN: KS YEW	27110H-1
OTHERWISE SPECIFIED:	CHK: SC CHDD	
X:XXX +/-0.05	Y.L	
X:XX +/-0.10	APVD: CHUANG	
X:X +/-0.20	SCALE : FREE	
X +/-0.50	DRAWING NO:	
EFFECTIVE DATE : 13/7/07	A1215	(1) 171101H
REVISION: 03		(2) 110 SERIES HOUSING
SHEET OF : 1 / 1		

EPI Terminals & Connectors
Elamp Precision Industry(M) Sdn.Bhd.

PART NAME:
110 SERIES TAB

APPLICABLE (1) TERMINALS (2) HOUSING