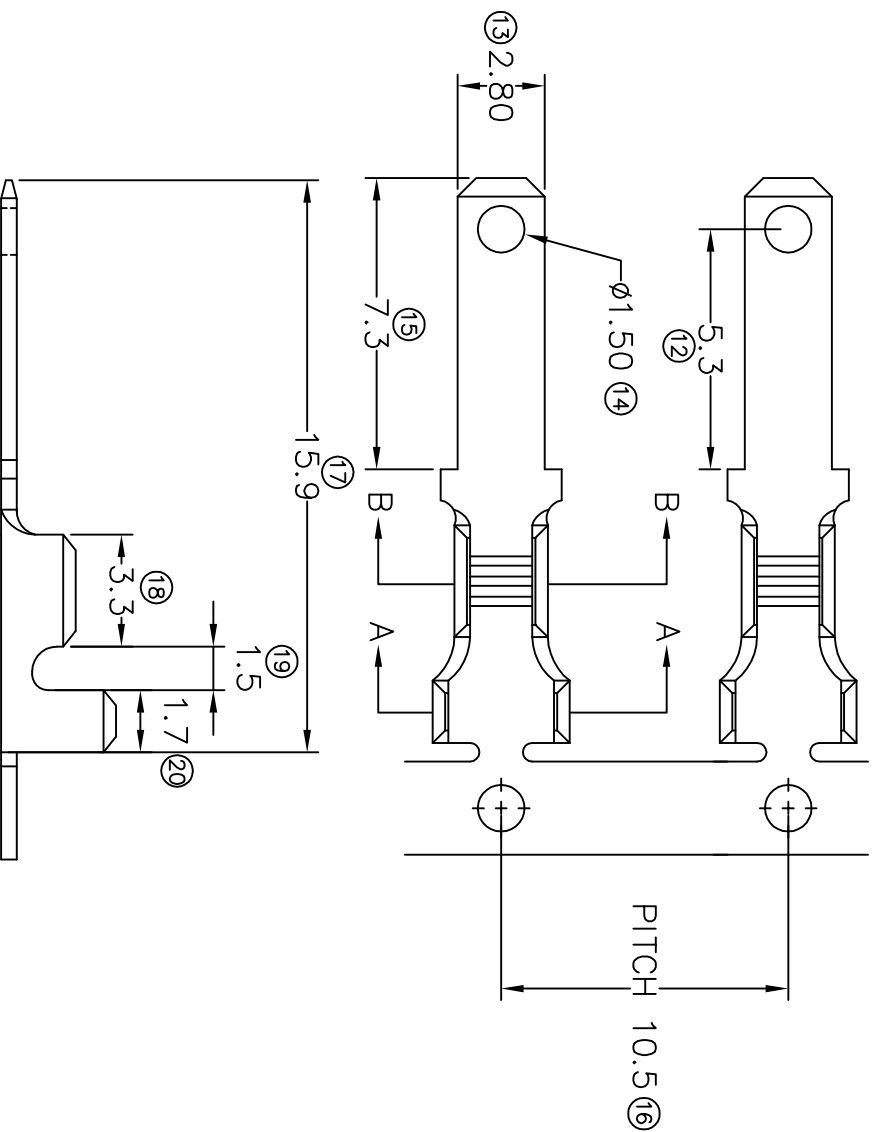
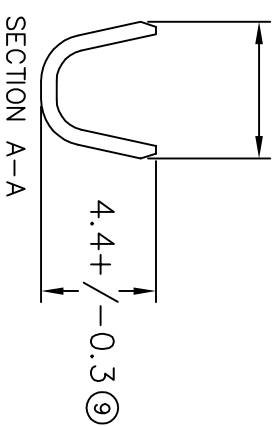


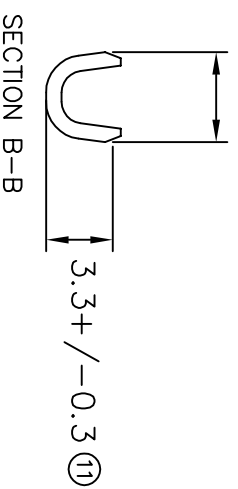
# TERMINALS SPECIFICATION DRAWING



4.9+/-0.35 (8)



3.4+/-0.35 (10)



FOR REFERENCE ONLY

- 7) CRIMPING WIRE TENSILE FORCE IS BASE ON COPPER BREAK OFF INTENSITY.
- 6) TEMPERATURE RANGE -40°C TO +120°C.
- 5) VOLTAGE-MAX [VOLTS] PER WIRE SPECIFICATION.
- 4) THICKNESS PLATING MORE THAN 40µ INCH.
- 3) PACKING QTY : 5000 PCS/REEL.
- 2) WIRE INSULATION (O.D) : 2.5MM.
- 1) APPLICABLE WIRE RANGE : 1.25-0.63MM<sup>2</sup>.

SPECIFICATION :

<b>MATERIAL:</b> t0.50 BRASS C2680	<b>PRE-TIN PLATED</b> 27114M-2T
<b>DIMENSIONS :</b> MM	<b>TIN PLATING</b> 27114M-2
<b>TOLERANCE UNLESS OTHERWISE SPECIFIED:</b> X.XXX +/-0.05 X.XX +/-0.10 X.X +/-0.20 X +/-0.50	<b>NONE</b> 27114M-1
<b>DWN:KS YEW</b>	<b>TREATMENT SELECTIVE</b> PART NUMBER
<b>CHK: SC CHOO</b>	<b>EPJ Terminals &amp; Connectors</b> Elamp Precision Industry(M) Sdn.Bhd.
<b>APVD: CHUANG</b>	<b>PART NAME:</b> 110 SERIES TAB
<b>SCALE : FREE</b>	<b>APPLICABLE (1) TERMINALS (2) HOUSING</b>
<b>DRAWING NO: A1359</b>	<b>(1) 110 SERIES (2) _____</b>
<b>EFFECTIVE DATE : 13/7/07</b>	
<b>REVISION:</b> 03	
<b>SHEET OF :</b> 1 / 1	