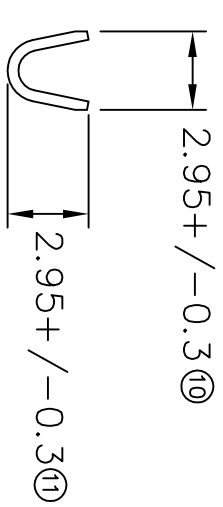
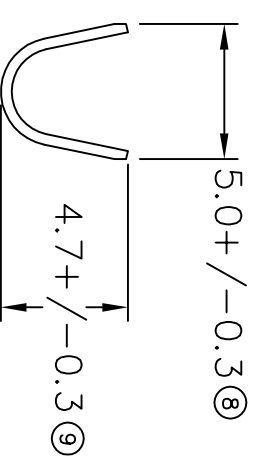
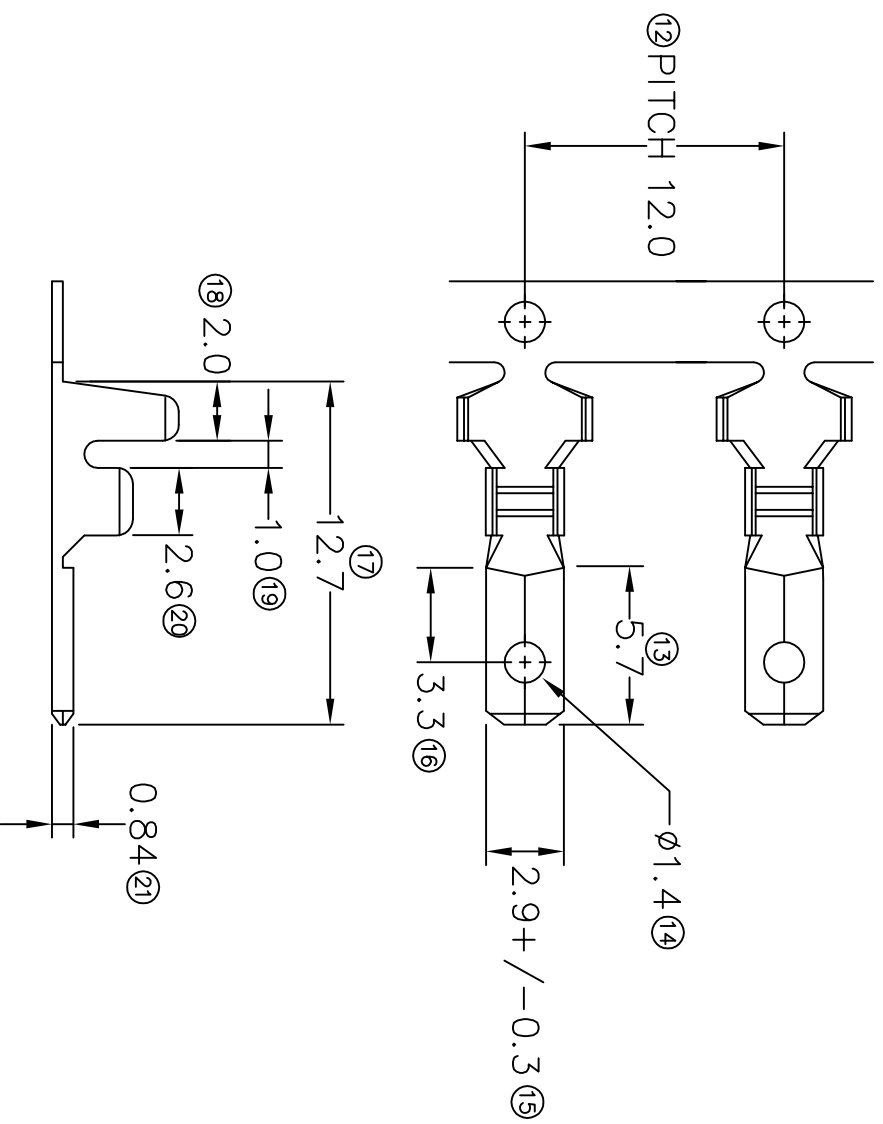


TERMINALS SPECIFICATION DRAWING



FOR REFERENCE ONLY

- 7> CRIMPING WIRE TENSILE FORCE IS BASE ON COPPER BREAK OFF INTENSITY.
- 6> TEMPERATURE RANGE -40°C TO +120°C.
- 5> VOLTAGE-MAX (VOLT)S PER WIRE SPECIFICATION.
- 4> THICKNESS PLATING MORE THAN 40µ INCH.
- 3> PACKING QTY : 4000 PCS/REEL.
- 2> WIRE INSULATION (Q.D.) : 2.8MM.
- 1> APPLICABLE WIRE RANGE : 1.01-0.52MM².

SPECIFICATION:

MATERIAL: t0.40 BRASS C2680	PRE-TIN PLATED NONE	27117M-2T 27117M-1
DIMENSIONS : MM	TREATMENT SELECTIVE	PART NUMBER
TOLERANCE UNLESS OTHERWISE SPECIFIED:	DWN: KS YEW	EPI Terminals & Connectors Elamp Precision Industry(M) Sdn.Bhd. PART NAME: 110 SERIES TAB APPLICABLE (1) TERMINALS (2) HOUSING
X:XXX +/-0.05	CHK: SC CHOO	
X:XX +/-0.10	APVD: CHUANG	
X:X +/-0.20	SCALE : FREE	
X +/-0.50	DRAWING NO:	
EFFECTIVE DATE : 23/7/07	A1270	(1) - (2) -
SHEET OF : 1 / 1		

