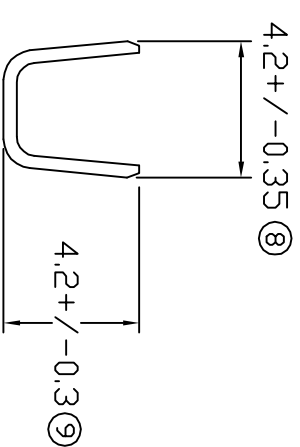
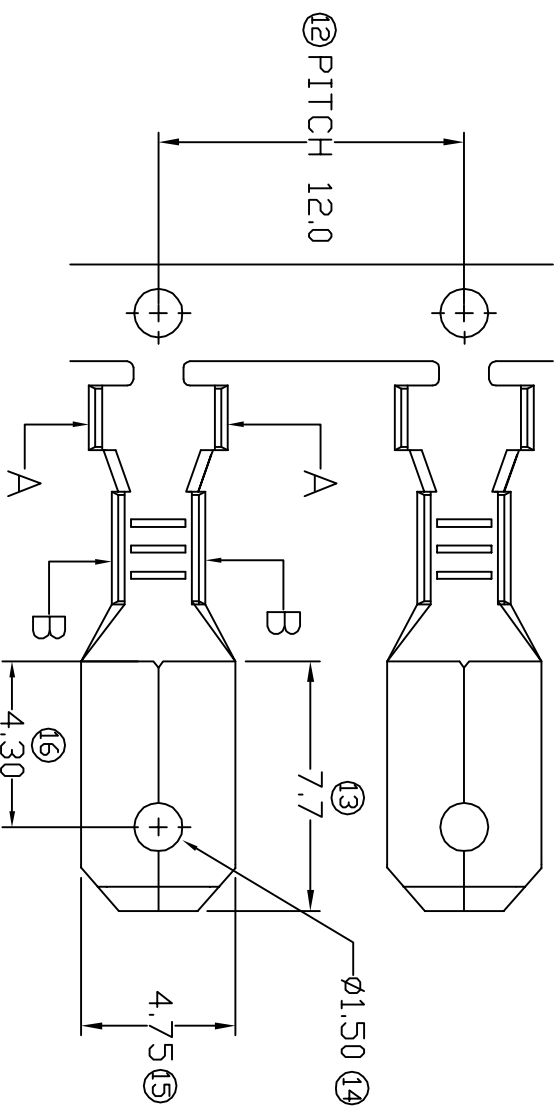
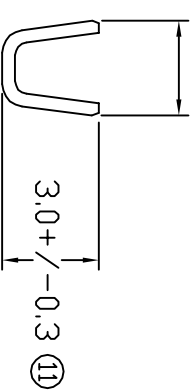


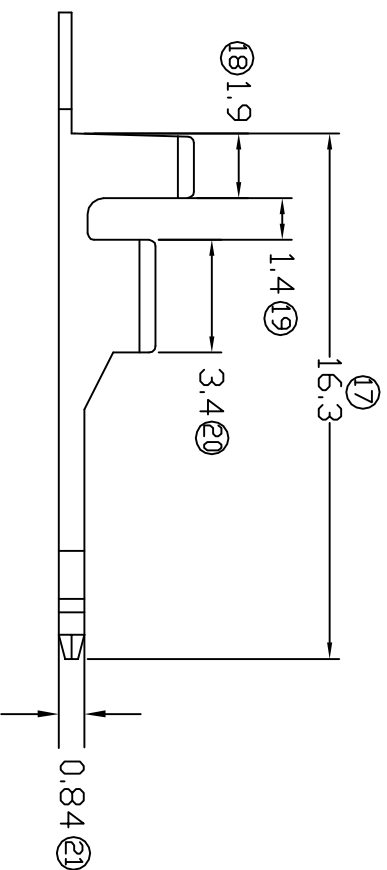
TERMINALS SPECIFICATION DRAWING



2.85 +/- 0.3 (10)



SECTION B-B



FOR REFERENCE ONLY

- 7) CRIMPING WIRE TENSILE FORCE IS BASE ON COPPER BREAK OFF INTENSITY.
- 6) TEMPERATURE RANGE -40°C TO +120°C.
- 5) VOLTAGE-MAX [VOLTS] PER WIRE SPECIFICATION.
- 4) THICKNESS PLATING MORE THAN 40μ INCH.
- 3) PACKING QTY : 4000 PCS/REEL.
- 2) WIRE INSULATION (O.D) : 2.4MM.
- 1) APPLICABLE WIRE RANGE : 0.95-0.49MM².

MATERIAL: TO.40 BRASS C2680		PRE-TIN PLATED 271874M(0.8)-2T	
DIMENSIONS : MM		TREATMENT SELECTIVE PART NUMBER	
DWN: KS YEW		EPI Terminals & Connectors Elamp Precision Industry(M) Sdn.Bhd.	
TOLERANCE UNLESS OTHERWISE SPECIFIED:			
X.XXX +/-0.05	CHK: SC CHOO		
X.XX +/-0.10	APVD: CHUANG		
X.X +/-0.20	SCALE : FREE	PART NAME: 187 SERIES TAB	
X +/-0.50	DRAWING NO:	APPLICABLE (1) TERMINALS (2) HOUSING	
EFFECTIVE DATE : 13/7/07	A1271-1	(1) 187(0.8) TYPE SERIES TAB (2) -	
REVISION: 04	SHEET OF : 1 / 1		