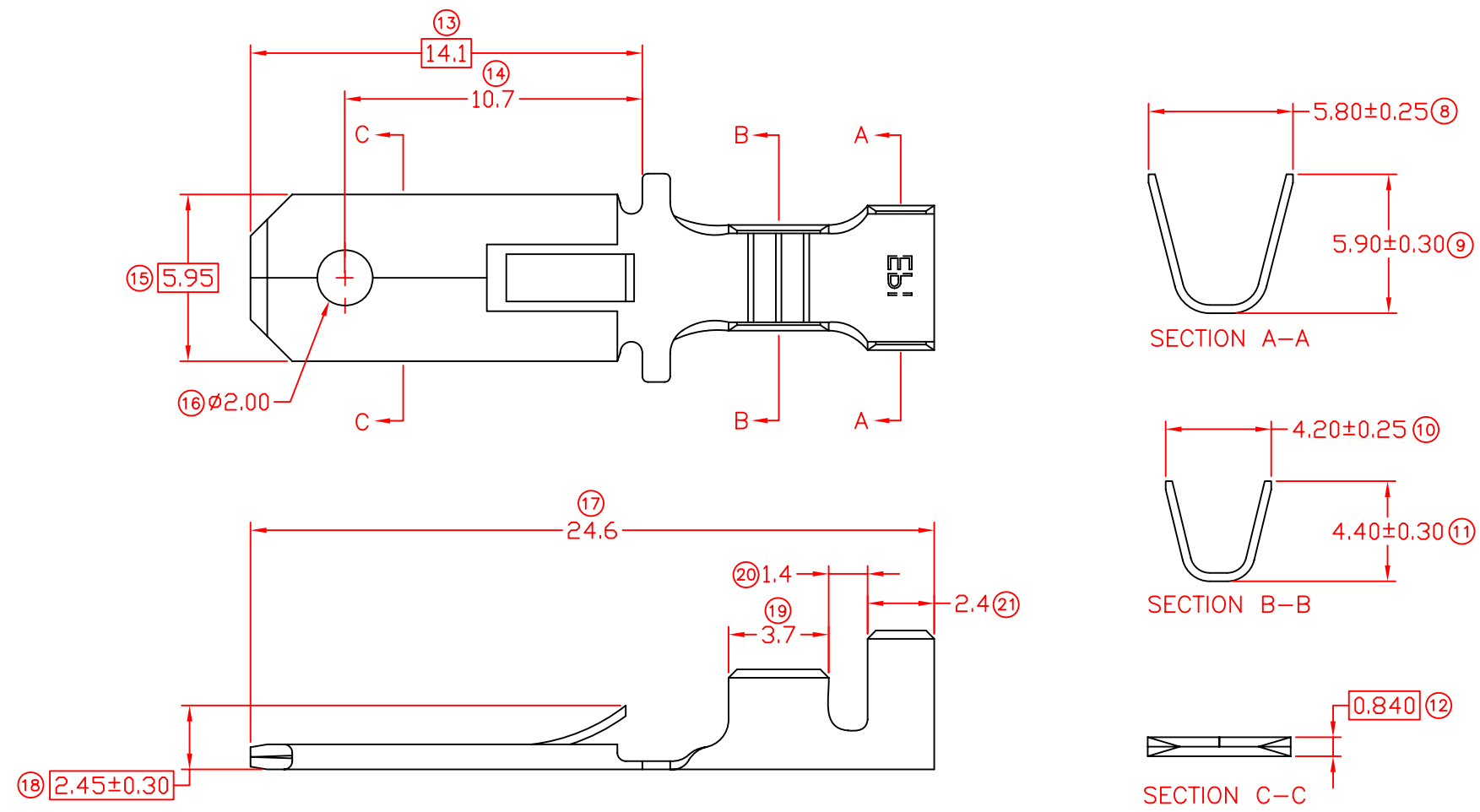


TERMINALS SPECIFICATION DRAWING

UNCONTROLLED COPY



- ☐ MATCHING DIMENSION
- 7) CRIMPING WIRE TENSILE FORCE IS BASE ON COPPER BREAK OFF INTENSITY.
 - 6) TEMPERATURE RANGE -40°C TO +120°C.
 - 5) VOLTAGE-MAX [VOLTS] PER WIRE SPECIFICATION.
 - 4) THICKNESS PLATING MORE THAN 40μ INCH.
 - 3) PACKING QTY : 4000 PCS/REEL.
 - 2) WIRE INSULATION (O.D) : 3.4MM.
 - 1) APPLICABLE WIRE RANGE : 2.45-1.25MM².

FOR REFERENCE ONLY

MATERIAL: t0.40 BRASS C2680	PRE-TIN PLATED	272503H-2T
	NONE	272503H-1
	TREATMENT SELECTIVE	PART NUMBER
DIMENSIONS : MM	PREPARE BY: KS YEW	Terminals & Connectors Elamp Precision Industry(M) Sdn.Bhd.
TOLERANCE UNLESS OTHERWISE SPECIFIED:	REVIEWED BY: CH ANG	
X.XXX +/--0.05 X.XX +/--0.10 X.X +/--0.20 X +/--0.50	APPROVED BY: CY CHUANG	PART NAME: 250 SERIES TAB
	SCALE : FREE	APPLICABLE (1) TERMINALS (2) HOUSING
	DRAWING NO: A1251-1	(1) 172503S/M/H (2) 250M SERIES
	EFFECTIVE DATE : 12/11/10	

SPECIFICATION :		REVISION: 07
REV.	DATE	AMENDMENT
07	12/11/10	(8) 5.5±0.35 CHANGE TO 5.80±0.25, FR (10) 4.3±0.35 TO 4.20±0.25 FR (18) 2.35±0.20 TO 2.45±0.30
		SHEET OF : 1 / 1