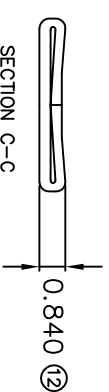
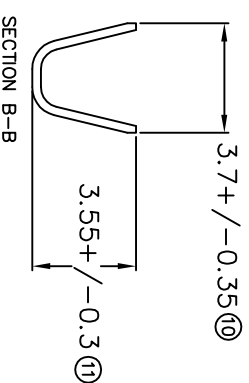
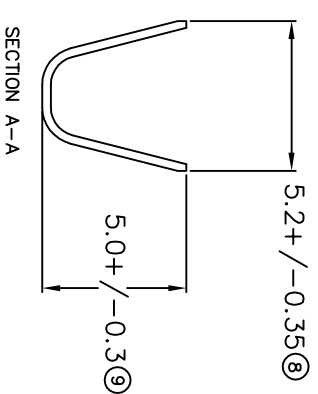
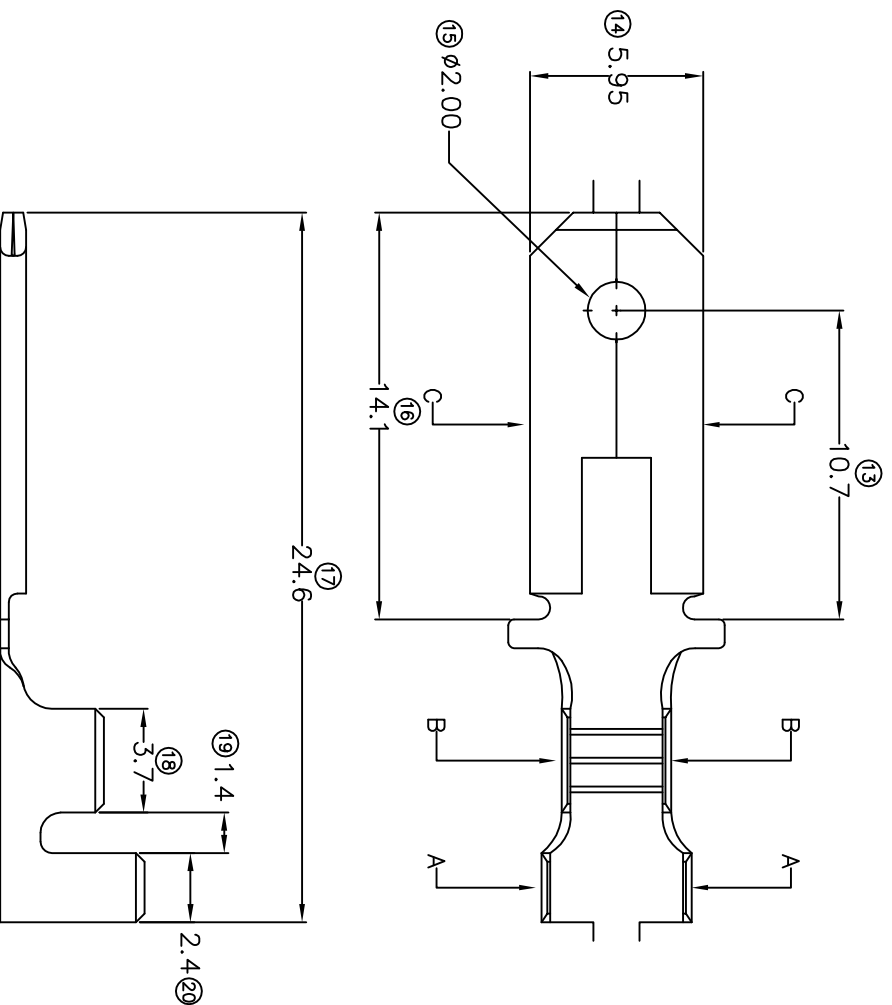


TERMINALS SPECIFICATION DRAWING



FOR REFERENCE ONLY

- 7) CRIMPING WIRE TENSILE FORCE IS BASE ON COPPER BREAK OFF INTENSITY.
- 6) TEMPERATURE RANGE -40°C TD +120°C.
- 5) V/DL TAGE-MAX [V/DLTS] PER WIRE SPECIFICATION.
- 4) THICKNESS PLATING MORE THAN 40μ INCH.
- 3) PACKING QTY : 4000 PCS/REEL.
- 2) WIRE INSULATION (O.D) : 3.0MM.
- 1) APPLICABLE WIRE RANGE : 1.22-0.54MM².

SPECIFICATION :

MATERIAL: t0.40 BRASS C2680		TIN PLATING NONE		272504-2
DIMENSIONS : MM TOLERANCE UNLESS OTHERWISE SPECIFIED:		TREATMENT SELECTIVE		272504-1
X.XXX +/-0.05 X.XX +/-0.10 X.X +/-0.20 X +/-0.50		DWN: KS YEW CHK: SC CHOO APVD: CHUANG		PART NUMBER 272504-1
REVISION: 01		SCALE : FREE DRAWING NO.:		PART NAME: 250 SERIES TABS
SHEET OF : 1 / 1		EFFECTIVE DATE : 23/7/07		APPLICABLE (1) TERMINALS (2) HOUSING (1) 17250 (2) -
		EPJ Terminals & Connectors Elamp Precision Industry(M) Sdn.Bhd.		