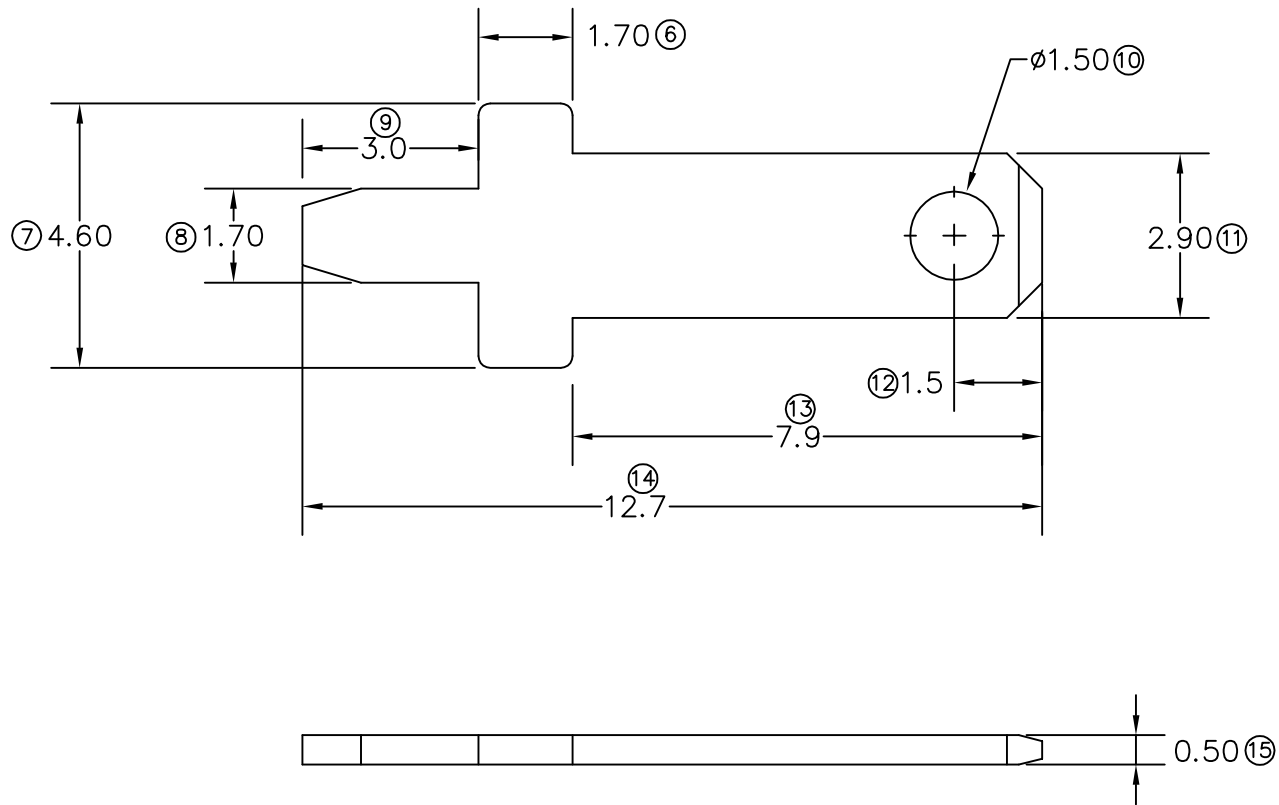



TERMINALS SPECIFICATION DRAWING



FOR REFERENCE ONLY

- 5) FOR PC BOARD $\phi 1.50\text{MM}$ THICKNESS 1.60MM.
- 4) TEMPERATURE RANGE -40°C TO $+120^{\circ}\text{C}$.
- 3) VOLTAGE-MAX [VOLTS] PER WIRE SPECIFICATION.
- 2) THICKNESS PLATING MORE THAN 40μ INCH.
- 1) PACKING QTY : 20000 PCS/REEL.

SPECIFICATION :

	MATERIAL:		
	t0.50 BRASS C2680	TIN PLATING	275028-2
		TREATMENT SELECTIVE	PART NUMBER
	DIMENSIONS : MM	DWN: KS YEWE	Epi Terminals & Connectors Elamp Precision Industry(M) Sdn.Bhd.
	TOLERANCE UNLESS OTHERWISE SPECIFIED:	CHK: SC CHOO Y.L. APVD: CHUANG	
	X.XXX ± 0.05 X.XX ± 0.10 X.X ± 0.20 X ± 0.50	SCALE : FREE	PART NAME: 110 SERIES TAB TERMINALS
REVISION: 02		DRAWING NO: A1405	APPLICABLE (1) TERMINALS (2) HOUSING (1) 110 FEMALE TAB (0.5) (2) -
			
SHEET OF : 1 / 1	EFFECTIVE DATE : 25/7/07		