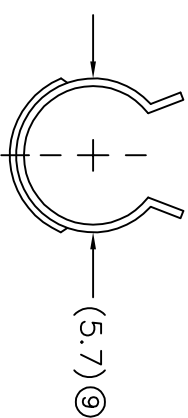
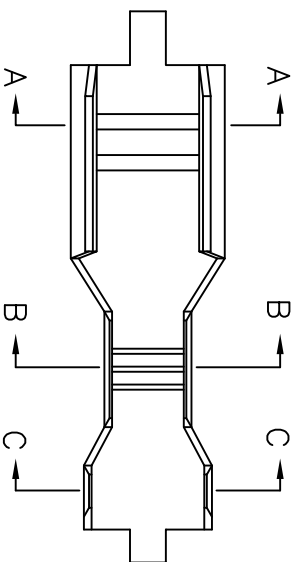
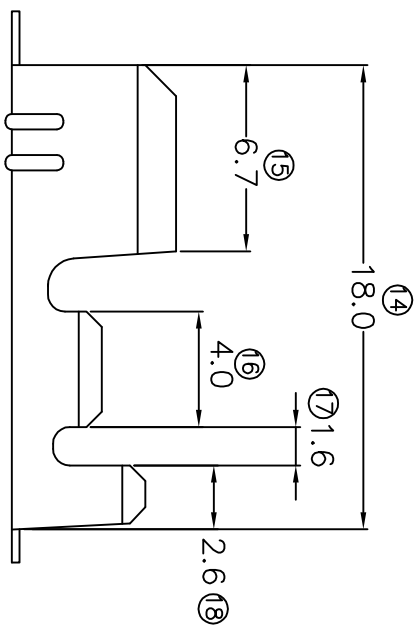
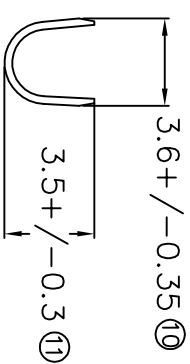


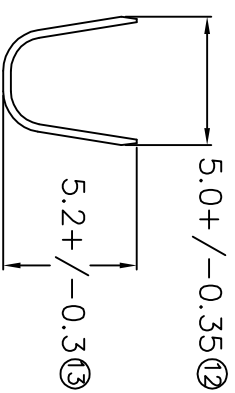
# TERMINALS SPECIFICATION DRAWING



SECTION A-A



SECTION B-B



SECTION C-C

FOR REFERENCE ONLY

- 8) CRIMPING WIRE TENSILE FORCE IS BASE ON COPPER BREAK OFF INTENSITY.
- 7) TEMPERATURE RANGE -40°C TO +120°C.
- 6) VOLTAGE-MAX [VOLT(S)] PER WIRE SPECIFICATION.
- 5) (9) FOR REFERENCE ONLY.
- 4) THICKNESS PLATING MORE THAN 40μ INCH.
- 3) PACKING QTY : 5000 PCS/REEL.
- 2) WIRE INSULATION (O.D) : 3.1MM.
- 1) APPLICABLE WIRE RANGE : 1.21-0.54MM<sup>2</sup>.

SPECIFICATION :

<b>MATERIAL:</b> TO.30 BRASS C2680	<b>TIN PLATING</b> NONE	<b>37060-2</b>	<b>37060-1</b>
<b>DIMENSIONS :</b> MM	<b>TREATMENT SELECTIVE</b>	<b>PART NUMBER</b>	
<b>OTHERWISE SPECIFIED:</b> TOLERANCE UNLESS OTHERWISE SPECIFIED: X.XXX +/-0.05 X.XX +/-0.10 X.X +/-0.20 X +/-0.50	<b>DWN:</b> KS YEW <b>CHK:</b> SC CHOO <b>APVD:</b> CHUANG <b>SCALE :</b> FREE <b>DRAWING NO:</b>	<b>Y.L</b> <b>Part Name:</b> Elamp Precision Industry(M) Sdn.Bhd. CLIP FOR Ø6.35 FUSE	
<b>EFFECTIVE DATE :</b> 17/7/07	<b>A1288</b>	<b>APPLICABLE (1) TERMINALS (2) HOUSING</b> (1) _____ (2) FH060N,FH060A	
<b>REVISION:</b> 03	<b>SHEET OF :</b> 1 / 1		