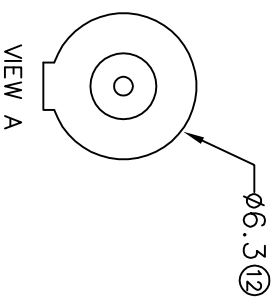
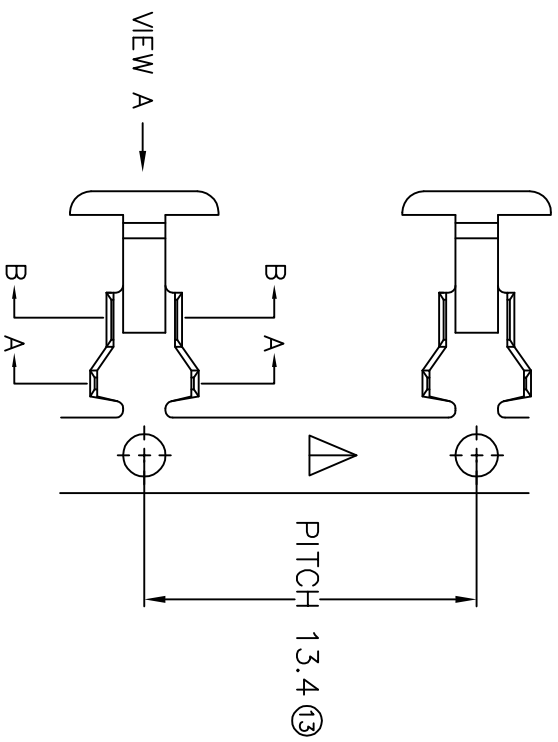
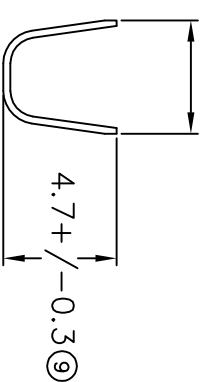


TERMINALS SPECIFICATION DRAWING

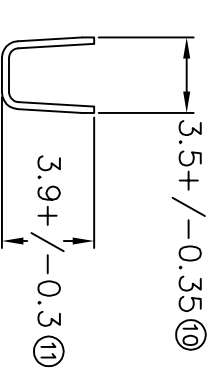


5.0+/-0.35 (8)

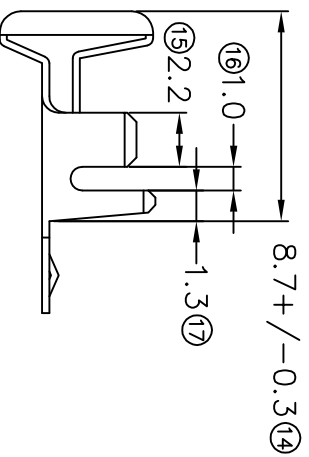


SECTION A-A

3.5+/-0.35 (10)



SECTION B-B



FOR REFERENCE ONLY

- 7) CRIMPING WIRE TENSILE FORCE IS BASE ON COPPER BREAK OFF INTENSITY.
- 6) TEMPERATURE RANGE -40°C TD +120°C.
- 5) VDL TAG-MAX [VDLTS] PER WIRE SPECIFICATION.
- 4) THICKNESS PLATING MORE THAN 40µ INCH.
- 3) PACKING QTY : 3500 PCS/REEL.
- 2) WIRE INSULATION (O.D) : 2.9MM.
- 1) APPLICABLE WIRE RANGE : 1.57-0.70MM².

SPECIFICATION :

MATERIAL: t0.30 BRASS C2680	TIN PLATING NONE	37062H-2 37062H-1	37062H-2 PART NUMBER
DIMENSIONS : MM	DWN: KS YEW	TREATMENT SELECTIVE	
TOLERANCE UNLESS OTHERWISE SPECIFIED:	CHK: SC CHOO	EPI Terminals & Connectors Elamp Precision Industry(M) Sdn.Bhd.	
X:XXX +/-0.05	APVD: CHUANG	PART NAME: BUTTON CONTACTS FOR LAMP AND SOCKET AND HOLDERS	
X:XX +/-0.10	SCALE : FREE	APPLICABLE (1) TERMINALS (2) HOUSING	
X:X +/-0.20	DRAWING NO:	(1) -	
X +/-0.50	A1324	(2) FH062	
EFFECTIVE DATE : 23/7/07	SHEET OF : 1 / 1		