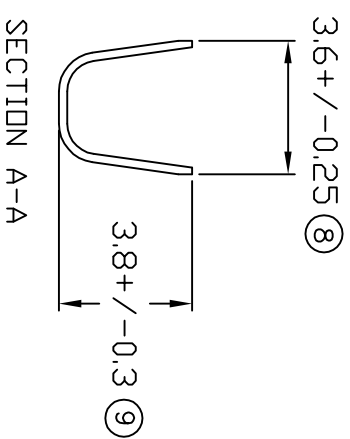
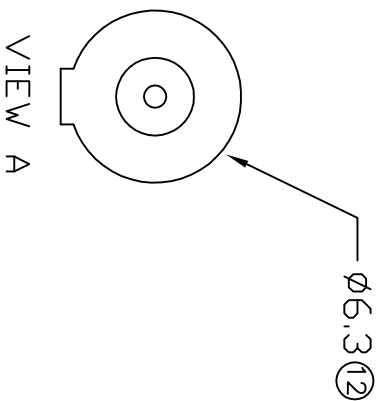
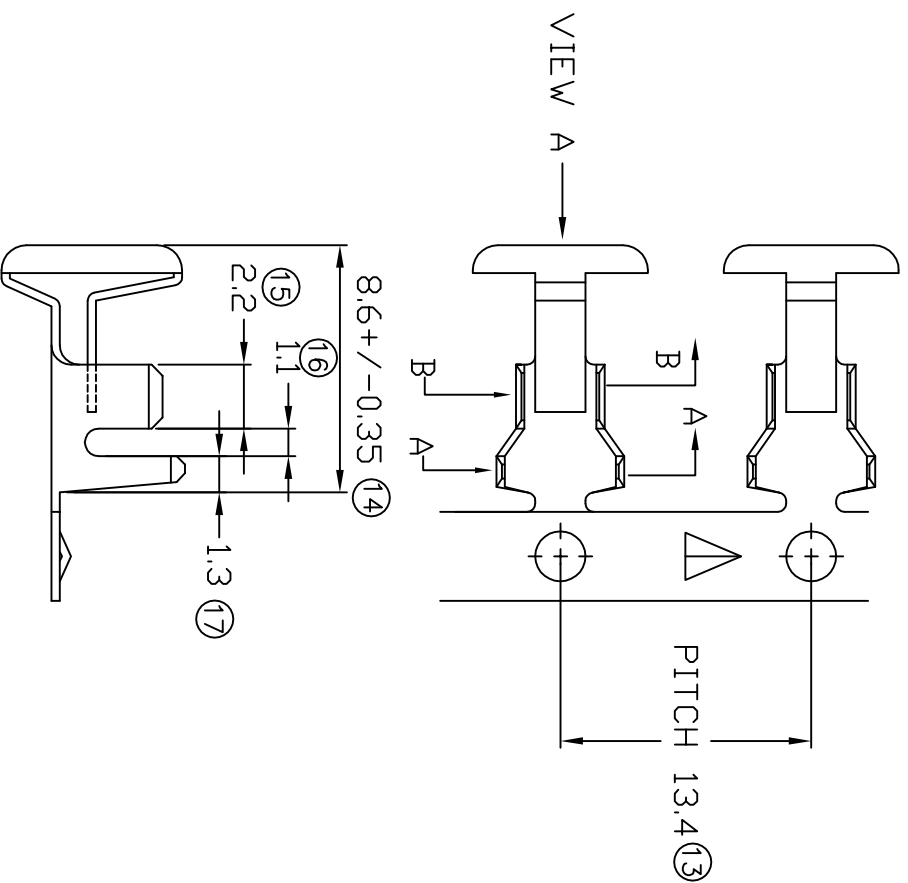
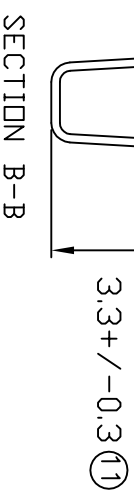


TERMINALS SPECIFICATION DRAWING



SECTION A-A
3.0 +/- 0.25 (10)



FOR REFERENCE ONLY

- 7) CRIMPING WIRE TENSILE FORCE IS BASE ON COPPER BREAK OFF INTENSITY.
- 6) TEMPERATURE RANGE -40°C TO +120°C.
- 5) VOLTAGE-MAX [V(DLTS)] PER WIRE SPECIFICATION.
- 4) THICKNESS PLATING MORE THAN 40μ INCH.
- 3) PACKING QTY : 4000 PCS/REEL.
- 2) WIRE INSULATION (O.D) : 2.3MM.
- 1) APPLICABLE WIRE RANGE : 1.19-0.50MM².

SPECIFICATION :

MATERIAL: +0.30 BRASS C2680	TIN PLATING NONE	37062S-2	37062S-1
DIMENSIONS : MM	TREATMENT SELECTIVE	PART NUMBER	
TOLERANCE UNLESS OTHERWISE SPECIFIED:	DWN: KS YEW	EPi Terminals & Connectors Elamp Precision Industry(M) Sdn.Bhd.	
REVISION: 02	CHK: SC CHOO	PART NAME: BUTTON CONTACT FOR FUSE HOLDER	
X.XXX +/-0.05	APVD: CHUANG	APPLICABLE (1) TERMINALS (2) HOUSING	
X.XX +/-0.10	SCALE : FREE	(1) -	
X.X +/-0.20	DRAWING NO:	(2) FH035/FH044	
X +/-0.50	EFFECTIVE DATE : 17/7/07		
SHEET OF : 1 / 1	A1408		