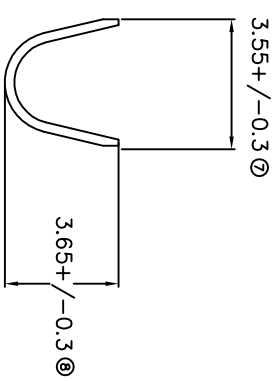
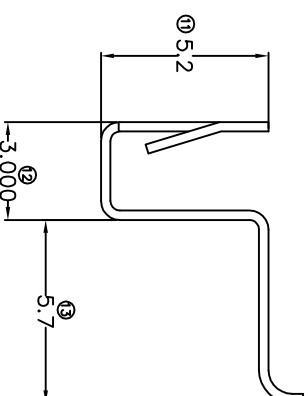
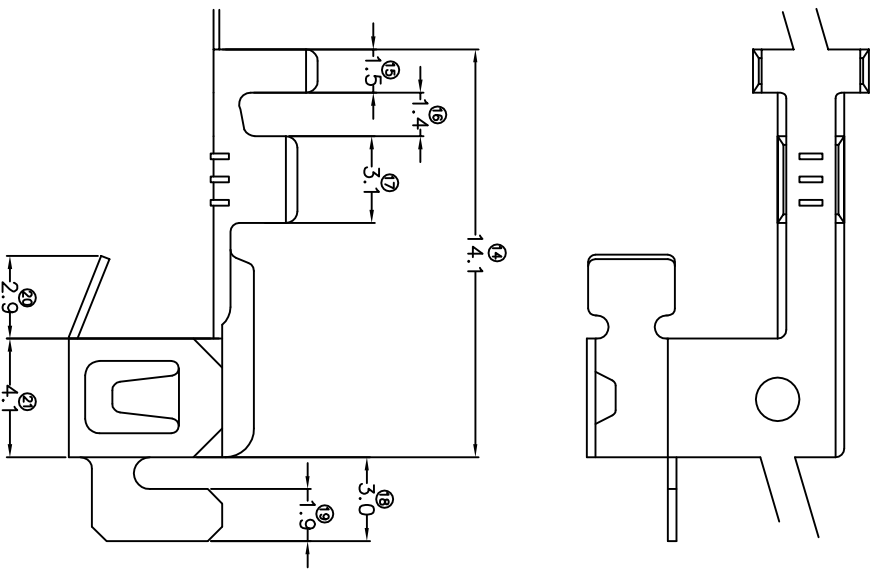
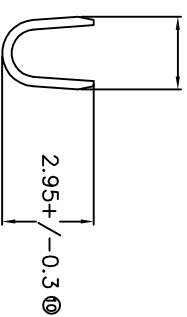


TERMINALS SPECIFICATION DRAWING



2.55+/-0.3 (1)



FOR REFERENCE ONLY

- 6) CRIMPING WIRE TENSILE FORCE IS BASE ON COPPER BREAK OFF INTENSITY.
- 5) TEMPERATURE RANGE -40°C TD +120°C.
- 4) VOLTAGE-MAX [VOLTS] PER WIRE SPECIFICATION.
- 3) PACKING QTY : 2000 PCS/REEL.
- 2) WIRE INSULATION (O.D) : 2.1MM.
- 1) APPLICABLE WIRE RANGE : 0.74-0.33MM².

SPECIFICATION :

| | | | | | |
|-----------------|---|---|--|--|--|
| | MATERIAL: t0.30 BRASS C2680 | | | | |
| | DIMENSIONS : MM TOLERANCE UNLESS OTHERWISE SPECIFIED: X.XXX +/-0.05 X.XX +/-0.10 X.X +/-0.20 X +/-0.50 | TREATMENT SELECTIVE NONE | PART NUMBER A1064 | | |
| | DWN: KS YEW CHK: SC CHOO APVD: CHUANG YI | EDP: CHUANG YI SCALE : FREE DRAWING NO: A1332 | PART NAME: QUICK DISCONNECTABLE TERMINALS | APPLICABLE (1) TERMINALS (2) HOUSING (1) - (2) - | |
| REVISION: 02 | SHEET OF : 1 / 1 | EFFECTIVE DATE : 25/7/07 | | | |