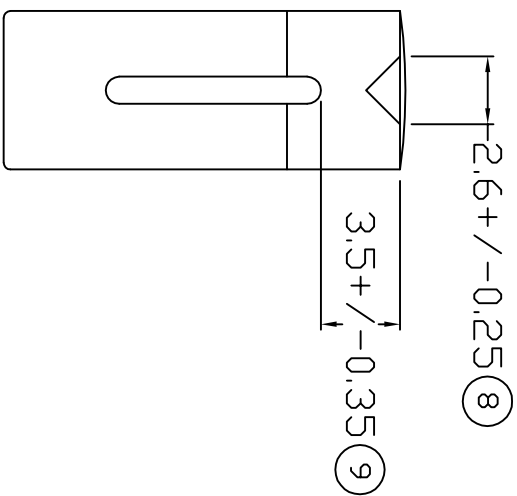
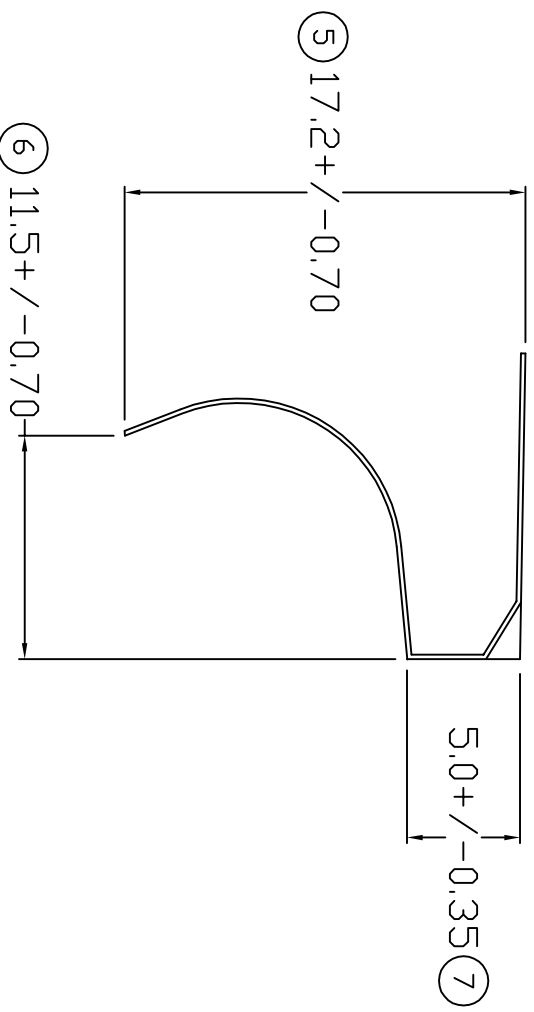
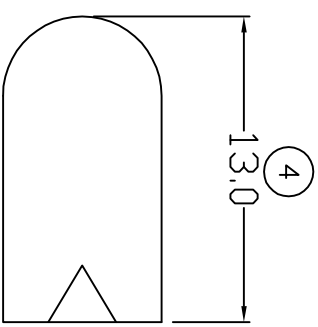


# TERMINALS SPECIFICATION DRAWING



**FOR REFERENCE ONLY**

- 3) TEMPERATURE RANGE -40°C TO +120°C.
- 2) VOLTAGE-MAX [VOLTS] PER WIRE SPECIFICATION.
- 1) PACKING QTY : 5000 PCS/BAG.

SPECIFICATION :

MATERIAL: t0.20 TITANIUM COPPER C1990	DIMENSIONS : MM TOLERANCE UNLESS OTHERWISE SPECIFIED: X.XXX +/-0.05 X.XX +/-0.10 X.X +/-0.20 X +/-0.50	REVISION: 00 	SHEET OF : 1 / 1
TREATMENT SELECTIVE NONE	DWN: KS YE W CHK: HY LM APVD: CHUANG YL SCALE : FREE DRAWING NO:	EFFECTIVE DATE : 27/9/07	A1518
PART NAME: SPRING CONTACT TERMINALS	PART NUMBER MP22D	EPI Terminals & Connectors Elamp Precision Industry(M) Sdn.Bhd.	APPLICABLE (1) TERMINALS (2) HOUSING (1) - (2) -