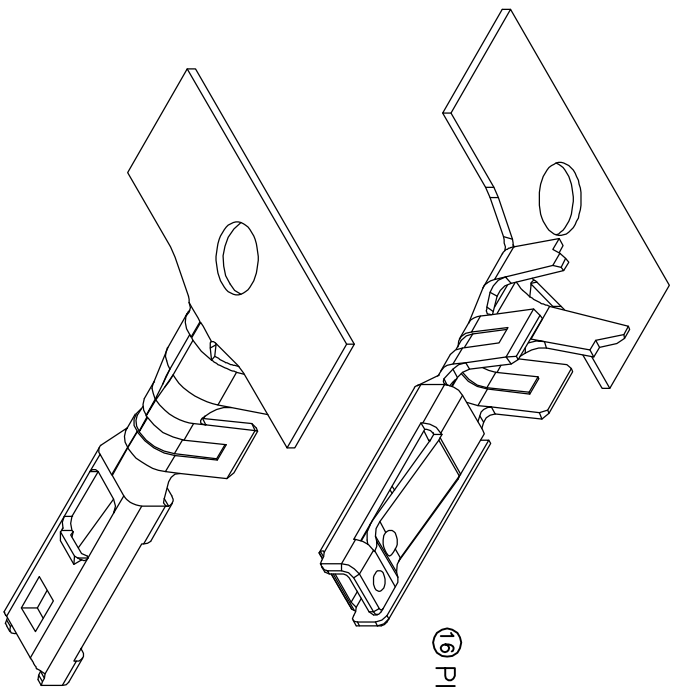
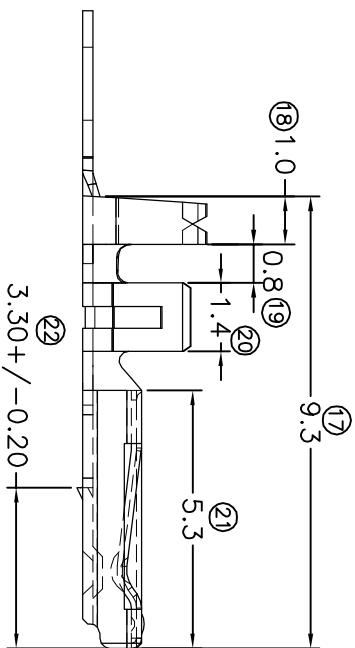
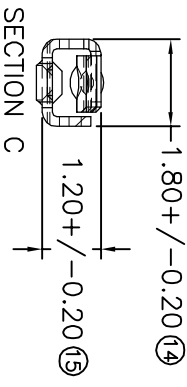
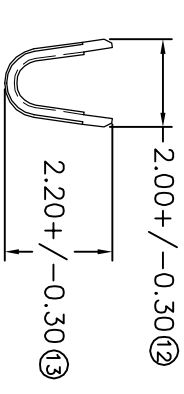
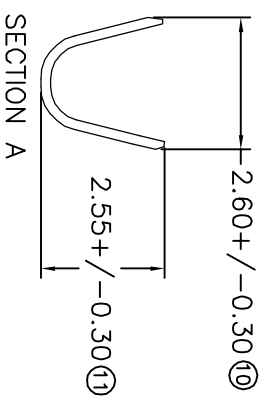
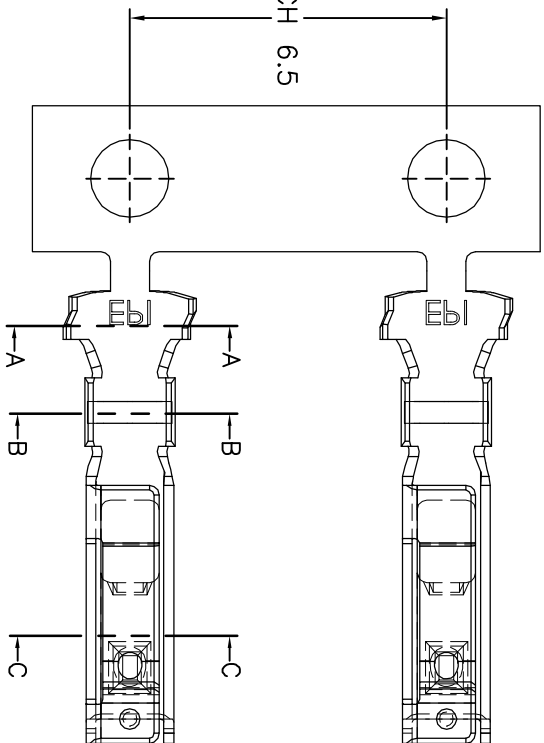


TERMINALS SPECIFICATION DRAWING

UNCONTROLLED COPY



⑩ PITCH 6.5



- 9) CRIMPING WIRE TENSILE FORCE IS BASE ON COPPER BREAK OFF INTENSITY.
- 8) TEMPERATURE RANGE -40°C TO +120°C.
- 7) VOLTAGE-MAX [VOLTS] PER WIRE SPECIFICATION.
- 6) TENSILE FORCE : MIN 0.30 KG (WITH TERMINALS MX270501[EP1]).
- 5) INSERT FORCE : MAX 0.90 KG (WITH TERMINALS MX270501[EP1]).
- 4) THICKNESS PLATING MORE THAN 40μ INCH.
- 3) PACKING QTY : 10000 PCS/REEL.
- 2) WIRE INSULATION (O.D) : 1.47MM.
- 1) APPLICABLE WIRE RANGE : 0.39~0.17MM².

SPECIFICATION :

FOR REFERENCE ONLY

REVISION:

00



SHEET OF :

1 / 1

MATERIAL:
to.20 PHOSPHOR
BRONZE
C5191

DIMENSIONS : MM

TOLERANCE UNLESS
OTHERWISE SPECIFIED:

X.XXX	+/-0.05
X.XX	+/-0.10
X.X	+/-0.20
X	+/-0.50

CHK: CH CHUANG

APVD: CHUANG

SCALE : FREE

DRAWING NO:

A1534

EFFECTIVE DATE :

12/1/09

PRE-TIN PLATED
TREATMENT SELECTIVE

EP1 Terminals & Connectors
Elamp Precision Industry(M) Sdn.Bhd.

PART NAME: 2.5 MINI SPLASH PROOF
CONN. CRIMP RECEPTACLE

APPLICABLE (1) TERMINALS (2) HOUSING
(1) MX270501
(2) AM050BR-1F , AM050CR-1F

REV.	DATE	AMENDMENT
00	12/1/09	REV. TEMP CHANGE TO 00, 5)INSERT FORCE MAX 0.50KG CHANGE TO INSERT FORCE MAX 0.90KG, 6)TENSILE FORCE MIN 0.15KG CHANGE TO MIN 0.30KG, (2) 1.80+/-0.30 CHANGE TO 2.00+/-0.30.
TEMP	28/10/08	FOR TRIAL RUN ONLY