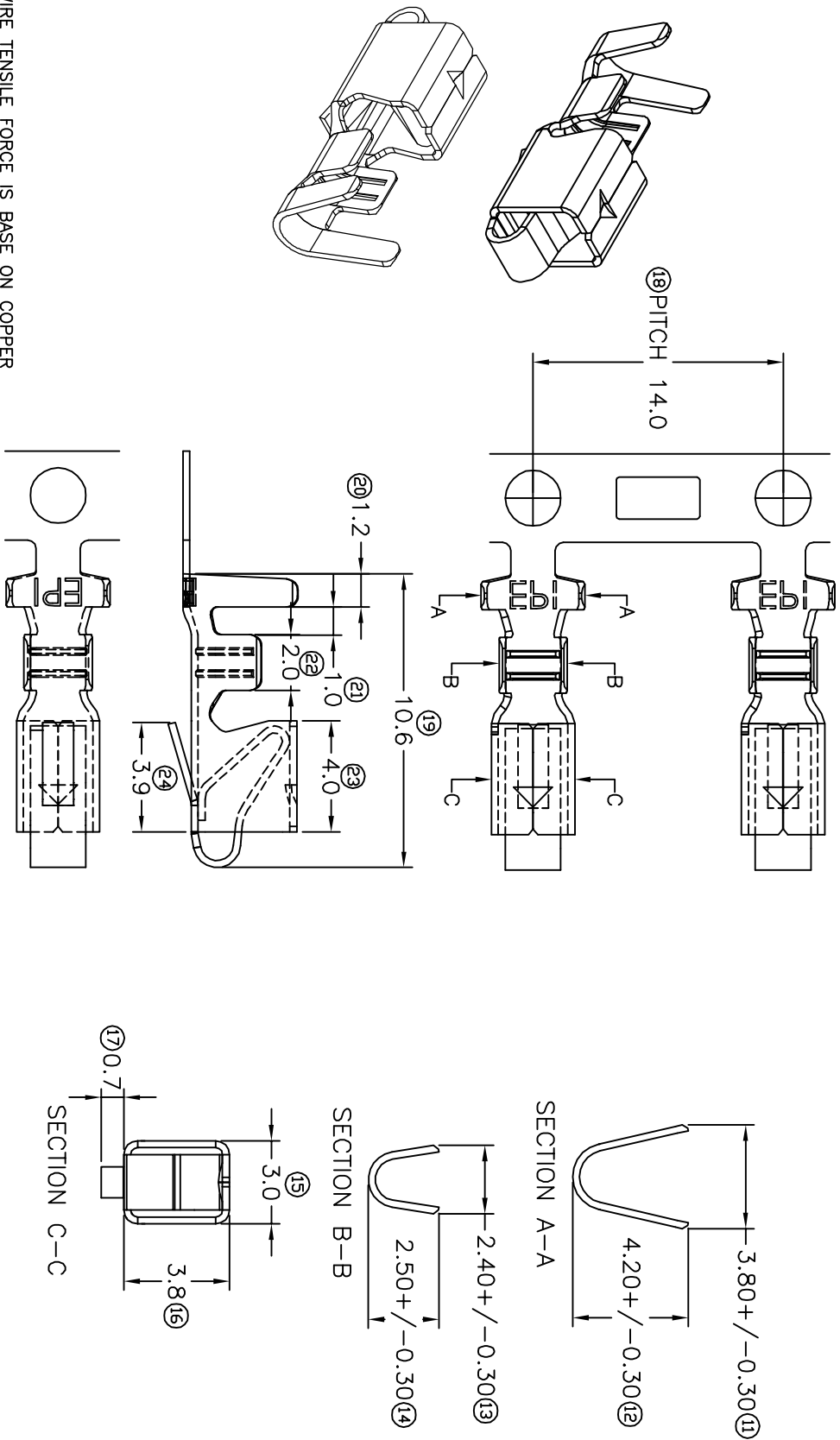


# TERMINALS SPECIFICATION DRAWING

UNCONTROLLED COPY



- 10) CRIMPING WIRE TENSILE FORCE IS BASE ON COPPER BREAK OFF INTENSITY.
- 9) TEMPERATURE RANGE: -40°C TO +120°C.
- 8) VOLTAGE-MAX [VOLTS] PER WIRE SPECIFICATION.
- 7) MATCHING WITH TAB 1.14MM SQUARE PIN.
- 6) TENSILE FORCE : MIN 0.30KG.
- 5) INSERT FORCE : MAX 0.60KG.
- 4) THICKNESS PLATING MORE THAN 40μ INCH.
- 3) PACKING QTY : 4000 PCS/REEL.
- 2) WIRE INSULATION (O.D) : 2.3MM.
- 1) APPLICABLE WIRE RANGE : 0.55-0.25MM<sup>2</sup>.

**FOR REFERENCE ONLY**

**SPECIFICATION :**

REASON OF CHANGE

REVISION:

REASON OF CHANGE

REVISION:

REASON OF CHANGE

NO

DATE

00

19/11/07

00

1ST ISSUE

19/11/07

1ST ISSUE

SHEET OF :

1 / 1

EFFECTIVE DATE :

19/11/07

1

1

1

1

1

1

MATERIAL:

to.25 BRASS

C2680

DIMENSIONS : MM

TOLERANCE UNLESS OTHERWISE SPECIFIED:

X.XXX +/-0.05  
X.XX +/-0.10  
X.X +/-0.20  
X +/-0.50

DWN: KS YEW

CHK: HY LIM

APVD: CHUANG

SCALE : FREE

DRAWING NO:

A1519-(1)

PRE-TIN PLATED

TREATMENT SELECTIVE

PART NUMBER

**EPI** Terminals & Connectors

Elamp Precision Industry(M) Sdn.Bhd.

PART NAME:

BOARD-TO-WIRE CRIMP STYLE TERMINALS

APPLICABLE (1) TERMINALS (2) HOUSING

(1) 1.14MM SQUARE PIN

(2) VH396H

VH396-2T